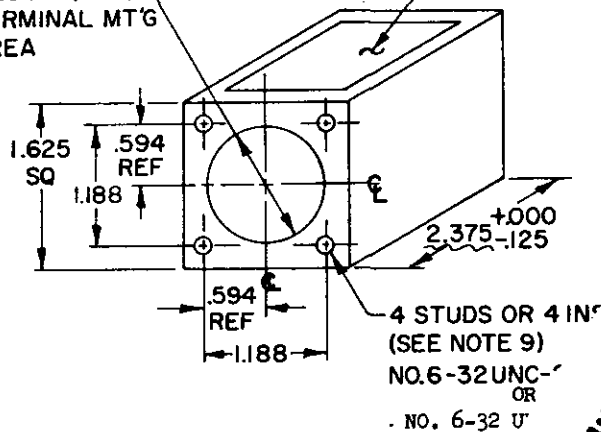


This military standard has been approved by the Department of Defense and is mandatory for use by all Departments and Agencies of the Department of Defense. Selection for all new engineering and design applications and for repetitive use shall be made from this document.

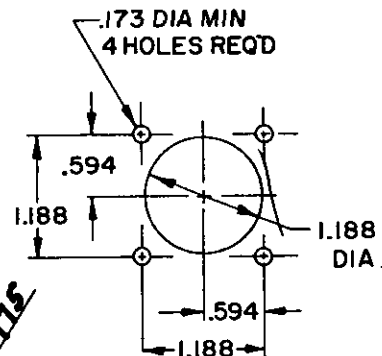
Reviewer/user information is current as of the date of this document. For future coordination of changes to this document, draft circulation should be based on the information in the current DD DIS (FSC listing).

AF 11, 85, 17 @ 19, 14 Army EL, MC Navy WP, SH @ MC

CASE, MOUNTING, TERMINAL ARRANGEMENT, AND MARKING

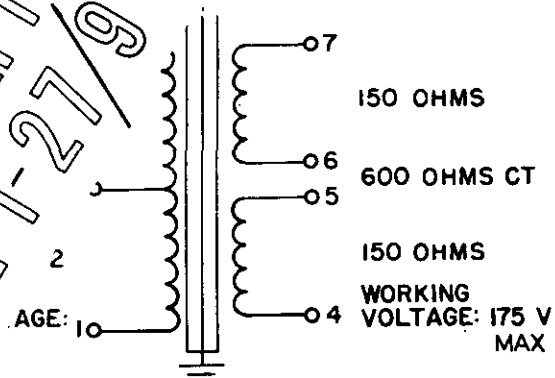
FED. SUP CLASS
5950CIRCUIT DIAGRAM & MARKING
READABLE WITH TRANSFORMER
IN THIS POSITION (SEE NOTE 6)1.125 DIA (MAX)
TERMINAL MT'G
AREA

MINIMUM CHASSIS CUTOUT



INCHES	MM
.125	3.18
.173	4.39
3/8	9.53
.594	15.09
1.125	28.58
1.188	30.18
1.625	41.28
2.375	60.33

J MARKING

.00 CPS
: 2 W MAX

NOTES:

- All dimensions in inches.
- Unless otherwise specified, all dimensions are to be maintained.
- Tolerance on mounting area with respect to the case.
- Metric equivalents (to the nearest mm) are shown for general information only and are based upon 1 inch = 25.4 mm.
- Terminal arrangement optional within mounting area indicated.
- Type designation, MS part no. and manufacturer's name or code symbol to be marked on side opposite terminals.
- Referenced document shall be of the issue in effect on date of invitations for bid.
- For design feature purposes, this standard takes precedence over procurement document referenced herein.
- Inserts not recommended for new design.

Mounting	MS part no.	Type designation
Studs	MS90006-A	TF4RX13AJ003
Inserts	MS90006-B	TF4RX13AJ003

P.A. Army - EL
Other Cust Navy - SH
Air Force - 11

TITLE

TRANSFORMER, AUDIO FREQUENCY,
TYPE TF4RX13AJ003

MILITARY STANDARD

MS90006

Procurement Specification
MIL-T-27

SUPERSEDES:

SHEET 1 OF 2

DD FORM 672
10 APR 64

(Coordinated) PREVIOUS EDITIONS OF THIS FORM ARE OBSOLETE.

5950-0498-7

APPROVED 28 JUNE 1956 REVISED 19 FEB 1960 1 AUG 1975