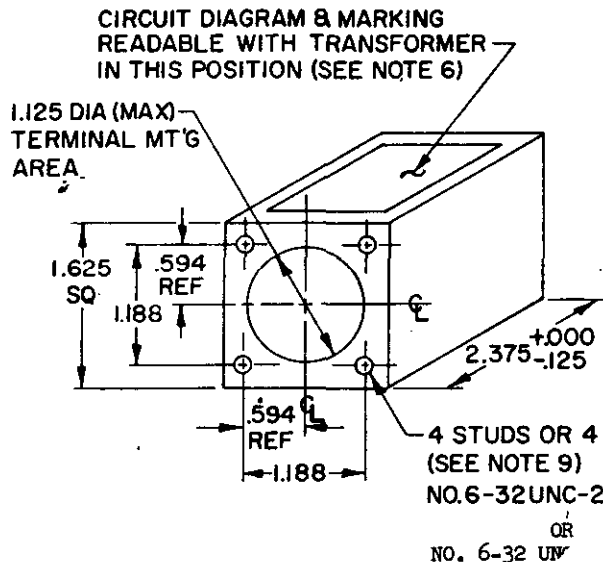


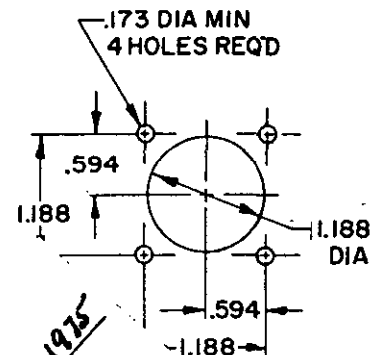
Reviewer/user information is current as of the date of this document. For future coordination of changes to this document, draft circulation should be based on the information in the current DODISS (FSC listing).  
 AF 11, 85, 17 @ 19, 14 Army EL, MU Navy WR, SH @ MC

This military standard has been approved by the Department of Defense and is mandatory for use by all Departments and Agencies of the Department of Defense. Selection for all new engineering and design applications and for repetitive use shall be made from this document.

## CASE, MOUNTING, TERMINAL ARRANGEMENT, AND MARKING

FED. SUP CLASS  
5950

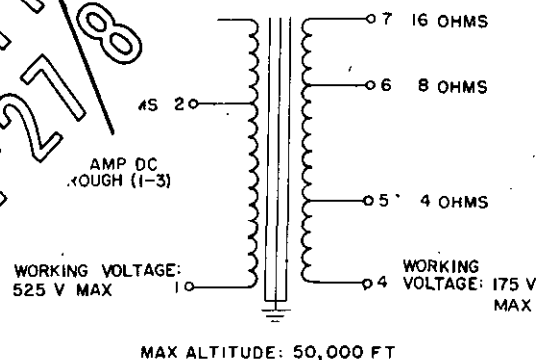
## MINIMUM CHASSIS CUTOUT



INCHES	MM
.125	3.18
.173	4.39
3/8	9.53
.594	15.09
1.125	28.58
1.188	30.18
1.625	41.28
2.375	60.33

CANCELED AFTER  
USE MIL-T-27/8

AND MARKING  
1,000 CPS  
VEL: 2 W MAX



## NOTES:

- All dime.
- Unless oth.
- Tolerance on overall case dimensions is  $^{+.000}_{-.063}$  (1.60 mm). Mounting studs or inserts are symmetrically located with respect to the center of the case.
- Metric equivalents (nearest .01 mm) are shown for general information only and are based upon 1 inch = 25.4 mm.
- Terminal arrangement optional within mounting area indicated.
- Type designation, MS part no. and manufacturer's name or code symbol to be marked on side opposite terminals.
- Referenced document shall be of the issue in effect on date of invitations for bid.
- For design feature purposes, this standard takes precedence over procurement document referenced herein.
- Inserts not recommended for new design.

Mounting	MS part no.	Type designation
Studs	MS90005-A	TF4RX13AJ002
Inserts	MS90005-B	TF4RX13AJ002

P.A. Army - EL  
Other Cust Navy - SH  
Air Force - 11

## TITLE

TRANSFORMER, AUDIO FREQUENCY,  
TYPE TF4RX13AJ002

## MILITARY STANDARD

MS90005

Procurement Specification  
MIL-T-27

SUPERSEDES:

SHEET 1 OF 2