

FED. SUP CLASS  
5305

USER SYMBOLS:  
REVIEWER SYMBOLS:  
DLA-1S  
USAF-82

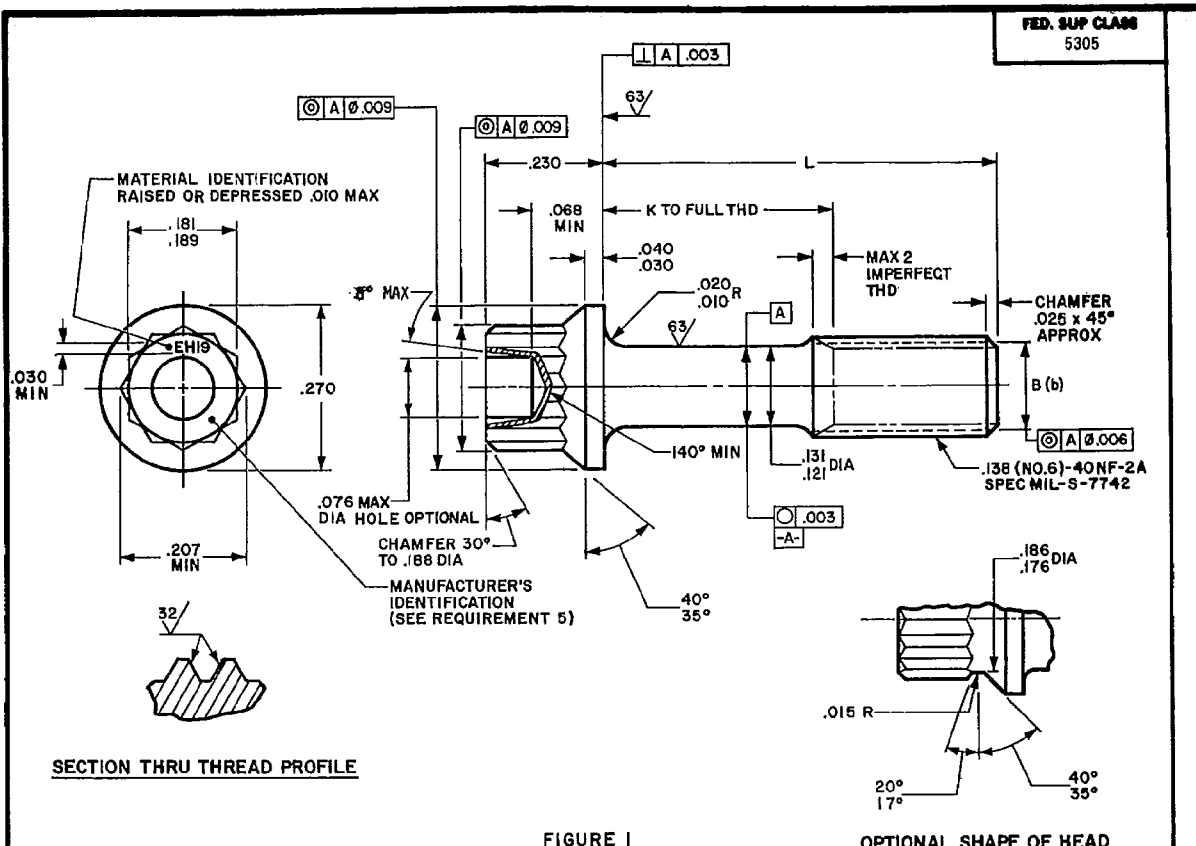


FIGURE 1

TABLE I. DIMENSIONS AND WEIGHTS

PART NO.	L	$\begin{matrix} +.000 \\ -.060 \end{matrix}$	APPROX WEIGHT LB/100	PART NO.	L	$\begin{matrix} +.000 \\ -.060 \end{matrix}$	APPROX WEIGHT LB/100
MS9177-02	.250	(a)	.30	MS9177-13	.938	.375	.55
MS9177-03	.312	(a)	.32	MS9177-14	1.000	.438	.57
MS9177-04	.375	(a)	.34	MS9177-15	1.062	.500	.59
MS9177-05	.438	(a)	.37	MS9177-16	1.125	.562	.61
MS9177-06	.500	(a)	.39	MS9177-17	1.188	.625	.64
MS9177-07	.562	(a)	.41	MS9177-18	1.250	.688	.66
MS9177-08	.625	(a)	.44	MS9177-19	1.312	.750	.68
MS9177-09	.688	.125	.46	MS9177-20	1.375	.812	.70
MS9177-10	.750	.188	.48	MS9177-21	1.436	.875	.73
MS9177-11	.812	.250	.50	MS9177-22	1.500	.938	.75
MS9177-12	.875	.312	.52				

(a) THREAD TO HEAD. MAXIMUM TWO IMPERFECT THREADS.

(b) B=PITCH DIAMETER (PD)

A INACTIVE FOR NEW DESIGN AFTER 31 DECEMBER 1963  
B DENOTES CHANGE

AMSC N/A  
DISTRIBUTION STATEMENT A. Approved for public release; distribution is unlimited.  
This military standard is approved for use by all Departments & Agencies of the Department of Defense. Selection for all new engineering and design applications and for repetitive use shall be made from this document.

"Review/user information is current as of the date of this document. For future coordination of changes to this document, draft circulation should be based on the information in the current DODDIS."

P.A. NAVY - AS Other Cust	TITLE SCREW, MACHINE-CRES DOUBLE HEXAGON, EXTENDED WASHER HEAD, .138-40	MILITARY STANDARD <b>MS 9177(AS)</b>
PROCUREMENT SPECIFICATION NONE	SUPERSEDES:	SHEET 1 OF 2

APPROVED 15 AUG 60  
REVISED (A) 20 NOV 63  
(B) 15 JUNE 88

FED. SUP CLASS  
5305

USER SYMBOLS:

REVISION SYMBOLS:

DJA-1S  
USAF-82

REQUIREMENTS

- ⓑ 1. MATERIAL: CORROSION AND HEAT RESISTANT STEEL PER AMS 5732.
- 2. MANUFACTURER'S SPECIFICATION: AMS 7478.
- 3. PART SUBJECT TO FLUORESCENT PENETRANT INSPECTION PER AMS 2645.
- 4. SURFACE ROUGHNESS: UNLESS OTHERWISE SPECIFIED, 125 MICROINCHES PER ANSI B46.1.
- ⓑ 5. MANUFACTURER'S IDENTIFICATION: THE MANUFACTURER'S SYMBOL PER MIL-STD-1291 (SEE FIG. 1) SHALL BE MARKED ON THE BOLT HEAD (SEE FIG. 1). MARKING MAY BE FORMED BY FORGING, STAMPING, OR LASER. MARKING SHALL BE RAISED OR INDENTED 0.010 INCH MAXIMUM.

NOTES

- 1. BREAK SHARP EDGES .003-.015 INCH UNLESS OTHERWISE SPECIFIED.
- 2. DIMENSIONS IN INCHES.
- 3. UNLESS OTHERWISE SPECIFIED: TOLERANCES: LINEAR DIMENSIONS: ±.010, ANGULAR: ±5°.
- 4. DO NOT USE UNASSIGNED PART NUMBERS.
- 5. IN THE EVENT OF A CONFLICT BETWEEN THE TEXT OF THIS STANDARD AND THE REFERENCES CITED HEREIN THE TEXT OF THIS STANDARD SHALL TAKE PRECEDENCE.
- 6. THIS STANDARD WAS DEVELOPED COOPERATIVELY WITH THE SAE COMMITTEE E-25, GENERAL STANDARDS FOR AEROSPACE PROPULSION SYSTEMS.

"Review/user information is current as of the date of this document. For future coordination of changes to this document, draft circulation should be based on the information in the current DOOISS."

This military standard is approved for use by all Departments & Agencies of the Department of Defense. Selection for all new engineering and design applications and for repetitive use shall be made from this document.

APPROVED 15 AUG 60 REVISED ⓑ FOR CHANGES SEE SHEETS 1 AND 2

P.A. NAVY — AS Other Cust	TITLE  SCREW, MACHINE-CRES DOUBLE HEXAGON, EXTENDED WASHER HEAD, 138-40	MILITARY STANDARD  <b>MS 9177(AS)</b>
PROCUREMENT SPECIFICATION NONE	SUPERSEDES:	SHEET 2 OF 2