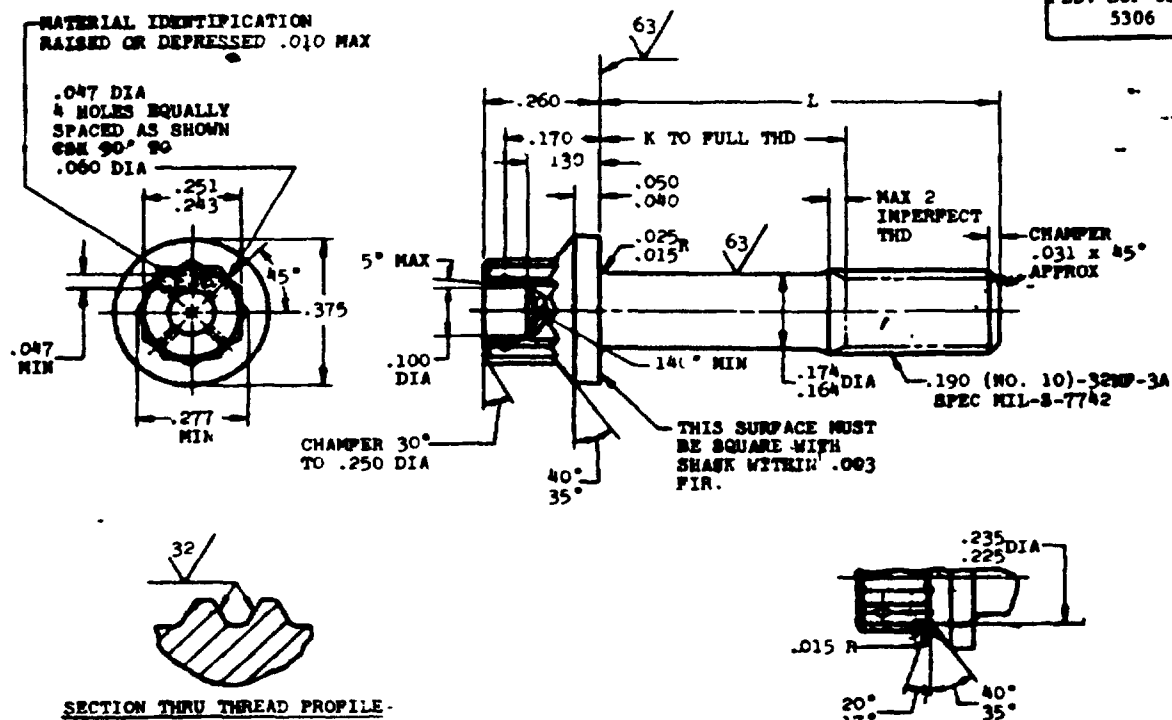


FED. SUP CI
5306



SECTION THRU THREAD PROFILE.

② INACTIVE FOR DESIGN AFTER 28 Feb 1964
FOR PARTS WITH MIL-S-8870 SCREW THREADS SEE MS0923

OPTIONAL SHAPE OF HEAD

PART NO.	L	K +.000 -.060	APPROX WEIGHT LBS/100	PART NO.	L	K +.000 -.060	APPROX WEIGHT LBS/100	PART NO.	L	K +.000 -.060	APPROX WEIGHT LBS/100
MS9088-05	.438	1/	.95	MS9088-23	1.562	.935	1.67				
MS9088-06	.500	1/	.99	MS9088-24	1.625	1.000	1.71				
MS9088-07	.562	1/	1.03								
MS9088-08	.625	1/	1.07	MS9088-25	1.638	1.062	1.75				
MS9088-09	.638	1/	1.11	MS9088-26	1.750	1.125	1.79				
MS9088-10	.750	1 1/2	1.15	MS9088-27	1.875	1.250	1.87				
MS9088-11	.812	.188	1.19	MS9088-28	2.000	1.375	1.95				
MS9088-12	.875	.250	1.23	MS9088-29	2.125	1.500	2.03				
MS9088-13	.938	.312	1.27	MS9088-30	2.250	1.625	2.11				
MS9088-14	1.000	.375	1.31	MS9088-31	2.375	1.750	2.19				
MS9088-15	1.062	.438	1.35	MS9088-32	2.500	1.875	2.27				
MS9088-16	1.125	.500	1.39	MS9088-33	2.625	2.000	2.35				
MS9088-17	1.188	.562	1.43	MS9088-34	2.750	2.125	2.43				
MS9088-18	1.250	.625	1.47	MS9088-35	2.875	2.250	2.51				
MS9088-19	1.312	.688	1.51	MS9088-36	3.000	2.375	2.59				
MS9088-20	1.375	.750	1.55								
MS9088-21	1.438	.812	1.59								
MS9088-22	1.500	.875	1.63								

1/ THREAD TO HEAD MAXIMUM TWO IMPERFECT THREADS

NOTES

- 1 SHANK SHALL BE STRAIGHT WITHIN .003 FIR PPP INCH OF BOLT LENGTH
2 THE CONCENTRICITY OF THREAD PD 14 RELATION TO THE SHANK SHALL BE WITHIN .006 FIR
3 THE CONCENTRICITY OF THE SHANK IN RELATION TO THE WASHP FACE DIAMETER AND 12 POINT OD SHALL BE
4 WITHIN .011 FIR
5 MATERIAL STEEL AMS 6322
6 HARDNESS ROCKWELL C26-32
7 FINISH CADMIUM PLATE AMS 2400 DIMENSIONS SPECIFIED ARE AFTER PLATING
8 SURFACE ROUGHNESS AS 291
9 MANUFACTURING SPECIFICATION AMS 7452 PARTS SUBJECT TO MAGNETIC PARTICLE INSPECTION PER AMS 2640
10 BREAK SHARP EDGES .003-.015 UNLESS OTHERWISE SPECIFIED
11 DIMENSIONS IN INCHES UNLESS OTHERWISE SPECIFIED
12 TOLERANCES, LINEAR DIMENSIONS + .010, ANGULAR DIMENSIONS +5

DO NOT USE UNASSIGNED PART NUMBERS

Ⓐ

REVISÉ ET REDRAWN

THIS STANDARD WAS DEVELOPED COOPERATIVELY WITH THE ENGINE AND PROPELLER UTILITY PARTS COMMITTEE OF THE SAE.

P.A. 11 OTHER CUST AS	MILITARY STANDARD	MS9088
PRODUCT SPECIFICATION NONE	BOLT, MACHINE STEEL DRILLED 12 POINT HEAD 190 (NO 10)-32 (CADMIUM PLATE)	SHEET 1 OF 1

This military standard is approved for use by all Departments and Agencies of the Department of Defense. Selection for all new engineering and design applications and for repetition use shall be made from this document, where applicable.

THE UNIVERSITY OF CHICAGO