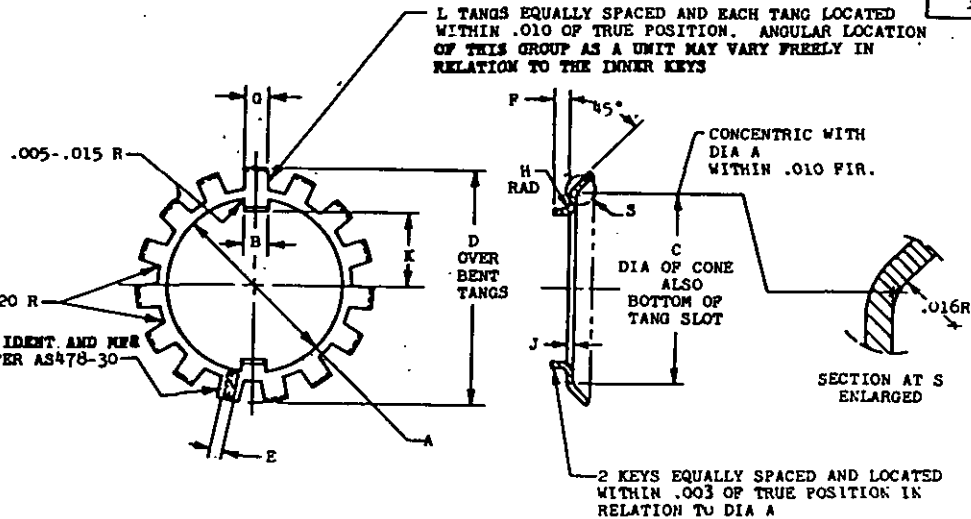


NOTES: 1. When Government drawings, specifications, or other data are used for any purpose other than in connection with a definitely related Government procurement operation, the United States Government thereby incurs no responsibility, nor any obligation whatsoever; and the fact that the Government may have furnished, furnished, or supplied the said drawings, specifications, or other data is not to be regarded by implication or otherwise as in any manner endorsing the product or the manufacturer thereof, or as in any way endorsing the product or the manufacturer thereof.

**MS9081**

MARK MAIL IDENT AND PER  
IDENT PER AS478-30



FED. SUP CLASS  
3110

PART NUMBER	NOMINAL BEARING BORE DIA	A +.010 -.000	B	C +.020 -.000	D +.000 -.030	E ±.030	F +.000 -.020	G	H ±.005	J	K +.000 -.005	L	APPROX HEIGHT LE
MS9031-10	.3537	.427	.105-.115	.531	.323	.060	.094	.04-.094	.016	.029-.035	.130	9	.002
MS9031-11	.4724	.507	.105-.115	.625	.922	.060	.094	.04-.094	.020	.029-.035	.168	9	.002
MS9031-12	.5106	.616	.105-.115	.750	1.094	.060	.094	.04-.094	.030	.029-.035	.214	11	.003
MS9031-13	.6693	.694	.105-.115	.375	1.203	.060	.094	.04-.094	.030	.029-.035	.253	11	.005
MS9031-14	.7374	.820	.156-.176	1.000	1.375	.030	.094	.146-.156	.030	.036-.044	.304	11	.003
MS9031-15	.9843	1.010	.156-.176	1.188	1.562	.030	.125	.146-.156	.040	.036-.044	.390	13	.010
MS9031-16	1.1-11	1.207	.156-.176	1.433	1.59	.080	.125	.146-.156	.040	.036-.044	.490	13	.011
MS9031-17	1.3730	1.420	.156-.176	1.656	2.07	.120	.125	.146-.156	.040	.046-.054	.588	15	.017
MS9031-18	1.5745	1.620	.230-.300	1.344	2.250	.120	.125	.204-.220	.040	.046-.054	.680	15	.021
MS9031-19	1.7717	1.835	.230-.300	2.062	2.500	.120	.156	.204-.220	.040	.046-.054	.787	17	.025
MS9031-20	1.9635	2.020	.230-.300	2.250	2.688	.120	.156	.204-.220	.040	.046-.054	.880	17	.026
MS9031-21	2.1654	2.230	.230-.300	2.500	2.953	.120	.156	.204-.220	.050	.052-.062	.965	17	.036
MS9031-22	2.3622	2.420	.230-.300	2.688	3.188	.120	.156	.204-.220	.050	.052-.062	1.060	17	.03
MS9031-23	2.5591	2.605	.230-.300	2.375	3.375	.120	.156	.204-.220	.050	.052-.062	1.152	19	.041
MS9031-24	2.7559	2.800	.230-.300	3.094	3.594	.120	.250	.204-.220	.060	.052-.062	1.242	19	.045
MS9031-25	2.9529	2.990	.230-.300	3.375	3.922	.120	.250	.297-.312	.070	.052-.062	1.328	19	.06
MS9031-26	3.1496	3.200	.340-.360	3.594	4.141	.120	.250	.297-.312	.070	.052-.062	1.428	19	.061
MS9031-27	3.3465	3.410	.340-.360	3.312	4.359	.120	.250	.297-.312	.070	.052-.062	1.525	19	.066
MS9031-28	3.5433	3.530	.340-.360	4.000	4.547	.120	.250	.297-.312	.030	.053-.063	1.610	19	.096
MS9031-29	3.7402	3.800	.340-.360	4.219	4.812	.120	.250	.297-.312	.080	.053-.063	1.720	19	.106
MS9031-30	3.9370	3.990	.340-.360	4.406	5.000	.120	.312	.297-.312	.080	.053-.063	1.815	19	.108
MS9031-31	4.1339	4.190	.340-.360	4.594	5.183	.120	.312	.360-.375	.050	.053-.063	1.915	19	.113
MS9031-32	4.3307	4.400	.340-.360	4.312	5.406	.120	.312	.360-.375	.080	.053-.063	2.020	19	.125

MATERIAL: STEEL AMS6350

FINISH: PHOSPHATE TREATMENT AMS2481

BREAK SHARP EDGES .003-.015 UNLESS OTHERWISE SPECIFIED.

DIMENSIONS IN INCHES. UNLESS OTHERWISE SPECIFIED: TOLERANCES; LINEAR DIMENSIONS ±.010,

ANGULAR DIMENSIONS ±2°.

DO NOT USE UNASSIGNED PART NUMBERS.

TRUE POSITION TOLERANCE SPECIFIED IS FOR MAXIMUM MATERIAL CONDITION.

**INACTIVE FOR DESIGN AFTER 26 OCTOBER 1972.**  
**NO SUPERSEDING STANDARD.**

AS & AMS ARE SAE PUBLICATIONS.

THIS STANDARD WAS DEVELOPED COOPERATIVELY WITH THE ENGINE AND PROPELLER UTILITY PARTS COMMITTEE OF THE SAE.

CUSTODIARY

SAE - AS  
P.A. USAF - TR

PROPOSED SPECIFICATION  
NONE

**MILITARY STANDARD**

WARNING: KEY = DOUBLE, BEARING RETAINING,  
REWORK

**MS9081**

SHEET 1 OF 1

NO FORM 1 SEP 66 223 E-25-58

U.S. GOVERNMENT PRINTING OFFICE: 1972-714-540/3048

APPROVED 11 Jun 58  
REVISED 7 Sep 62  
B26 Oct 72