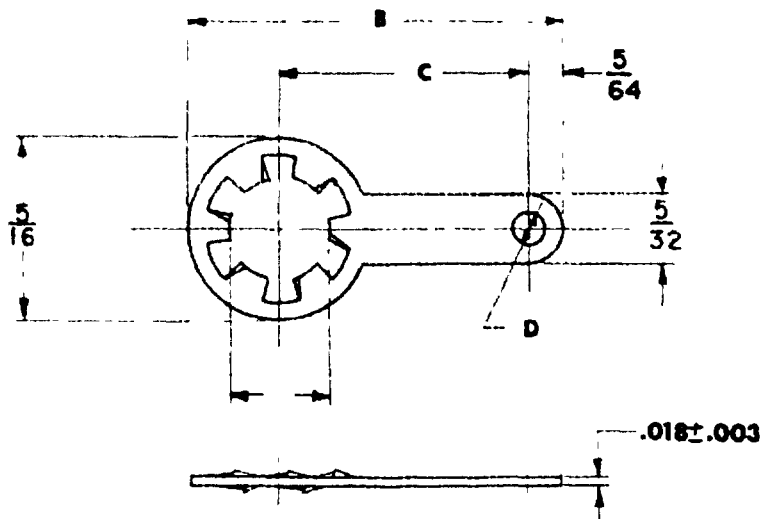


USER INTEREST ARMY: MO  
NAVY: MC

REVIEW INTEREST ARMY: MU  
NAVY: SH  
AF: TI

NOTICE—When Government drawings, specifications, or other data are used for any purpose other than in connection with a definitely related Government procurement operation, the United States Government hereby accepts no responsibility for any obligation whatsoever, and the fact that the Government may have furnished the data in any way shall not be construed as an endorsement, or other data is not to be regarded as an endorsement in any manner. It is the policy of the Government to encourage the use of such data in any way that may be related thereto.

This drawing is approved by the Department of Defense and is mandatory as a condition of selection for all new engineering and design work. It is not to be used for manufacturing or for other than this document.



DASH NUMBER	SCREW SIZE	HOLE DIA A		B	C	D	AWG SIZE
		MAX.	MIN.				
1	4	.127	.115	47/64	1/2	3/32	12 TO 20
2	6	.153	.141	47/64	1/2	3/32	
3	6	.153	.141	31/64	1/4	5/64	14 TO 20
4	8	.179	.167	47/64	1/2	3/32	12 TO 20

**MATERIAL:** PHOSPHOR BRONZE (1.25% TIN), GRADE E, NO. 502.

**FINISH:** HOT TIN DIP OR ELECTRO-DEPOSITED TIN ALL OVER, MINIMUM THICKNESS .0005.

**NOTES:** 1. ALL DIMENSIONS IN INCHES. TOLERANCE: FRACTIONAL  $\pm 1/64$ ; UNLESS OTHERWISE SPECIFIED.

2. MAXIMUM BURR OF .005 IS ALLOWABLE.

3. FOR DESIGN FEATURE PURPOSES THIS STANDARD TAKES PRECEDENCE OVER PROCUREMENT DOCUMENTS REFERENCED HEREIN.

4. THE MS PART NUMBER CONSISTS OF THE MS NUMBER PLUS THE DASH NUMBER.

5. REFERENCED DOCUMENTS SHALL BE OF THE ISSUE IN EFFECT ON DATE OF INVITATIONS FOR BID.

P A	MU	TYPE	TERMINAL, LUG, SOLDER TYPE, PHOSPHOR BRONZE STAMPING, LOCKING TYPE, FLAT, ONE HOLE	MILITARY STANDARD
Other Cust	SH			MS 77072
	TI			
FOR PROCUREMENT SEE LOCATION	SUPERSEDED			SHEET 1 OF 1
MIL-T 15059				