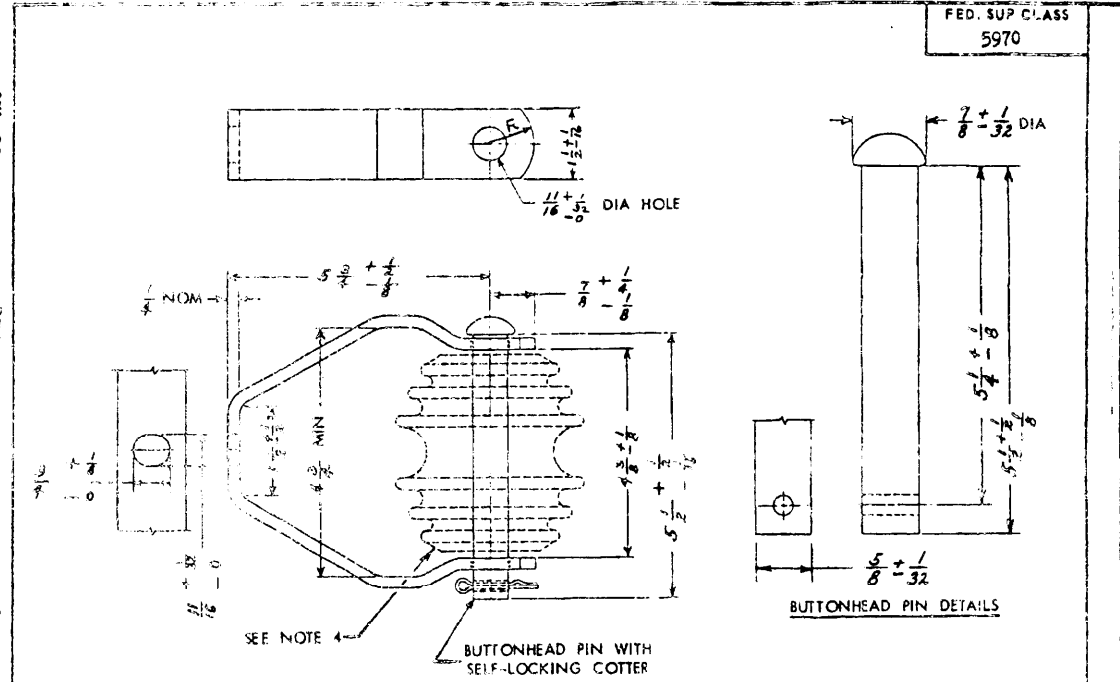


Reviewer/User Information in connection with this document. For future consideration of changes to this document, draft circulations should be based on the information in the current DD115 (FSC listing) **ME@ AF 85+**



LOW FREQUENCY FLASHOVER - WET (kv)		MINIMUM ULTIMATE STRENGTH OF INSULATED CLEVIS (pounds)
Horizontal	Vertical	
25	18	4000

NOTES:

1. ALL DIMENSIONS ARE IN INCHES.
2. REFERENCED DOCUMENTS SHALL BE OF THE ISSUE IN EFFECT ON DATE OF INVITATION FOR BID.
3. MATERIALS AND FINISH FOR CLEVISES AND CLEVIS PINS SHALL BE IN ACCORDANCE WITH EDISON ELECTRIC INSTITUTE SPECIFICATION TD-20.
4. INSULATING COMPOUND FOR PORCELAIN INSULATORS (SPOOL TYPE) SHALL BE IN ACCORDANCE WITH MIL-I-10, GRADE L222, WITH CONFIGURATION AND DIMENSIONS IN ACCORDANCE WITH EDISON ELECTRIC INSTITUTE SPECIFICATION YD1-53, CLASS 53-5
5. STRAIN INSULATORS WITH CLEVISES SHALL BE FREE OF BURRS, SPLINTERS, SHARP POINTS AND EDGES WHICH COULD DAMAGE CONDUCTORS.

This military standard has been approved by the Department of Defense and is mandatory for use by all Departments and Agencies of the Department of Defense. Section for all new implementing and design applications and for repetitive use shall be made from this document.

P.A. Other Cust:	EL EC 85	TITLE INSULATOR, STRAIN, WITH CLEVIS	MILITARY STANDARD MS75076
PROCUREMENT SPECIFICATION NONE	SUPERSEDES:	SHEET	1 OF 1