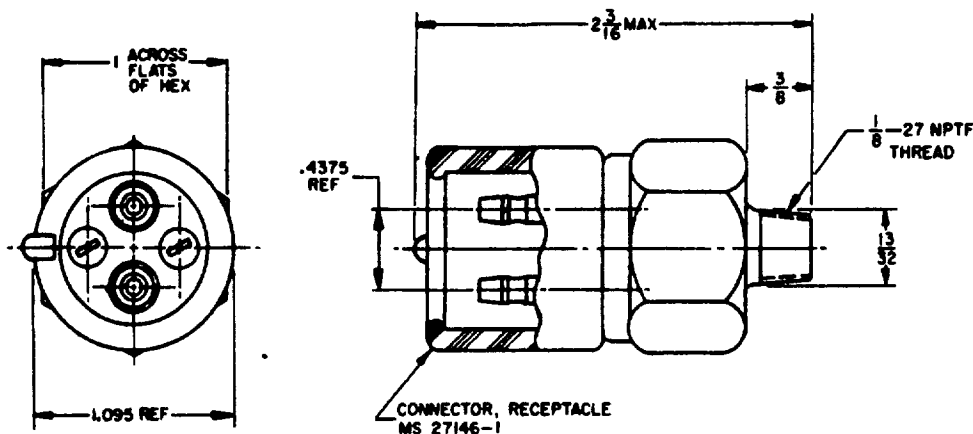


FED SUP CLASS
5930



NOTES:

1. TYPE II (SUFFICIENTLY HIGH PRESSURE CLOSURES CONTACTS) GRADE A (WATERPROOF) CLASS 2 (LOW VIBRATION) OF PROCUREMENT SPECIFICATION.
2. SWITCH CONTACTS SHALL CLOSE FROM 40 TO 110 PSI (ACTUATING PRESSURE) AND REMAIN CLOSED UPON INCREASING PRESSURE.
3. SWITCH CONTACT RATING AT 24 VOLTS DC: RESISTIVE LOAD 3 AMPS.
4. SWITCH SHALL MEET OVERLOAD PRESSURE REQUIREMENTS OF PROCUREMENT SPECIFICATION EXCEPT APPLIED PRESSURE SHALL BE 1800 PSI FOR 30 SECONDS. SWITCH SHALL NOT DISINTEGRATE UNDER 2500 PSI.
5. UNLESS OTHERWISE SPECIFIED, DIMENSIONS ARE IN INCHES, TOLERANCES ARE $\pm 1/32$ ON FRACTIONS.
6. FOR DESIGN FEATURE PURPOSES, THIS STANDARD TAKES PRECEDENCE OVER PROCUREMENT DOCUMENTS REFERENCED HEREIN.
7. REFERENCED DOCUMENTS SHALL BE OF THE ISSUE IN EFFECT ON DATE OF INVITATION FOR BID.
8. THIS STANDARD IS NOT INTENDED TO LIMIT CONSTRUCTION TO FEATURES OTHER THAN AS SHOWN HEREON BY DIMENSIONS, NOTATIONS AND REFERENCED DOCUMENTS.

This standard has been approved by the Department of the Army and is mandatory for use by that activity. All other military activities as are required to comply with this standard where suitable.

APPROVED 27 FEB. 1964 REVISED A 26 SEPTEMBER 1967 26 JUNE 1970

P.A. AT Other Cust	TITLE SWITCH, PRESSURE-STOPLIGHT, VEHICULAR, HYDRAULIC BRAKE SYSTEM, 24 VOLT, WATERPROOF	MILITARY STANDARD		
		MS75063 (AT)		
PROCUREMENT SPECIFICATION MIL-S-12211	SUPERSEDES	SHEET	OF	1

DD FORM 672-1 (Limited coordination)

PREVIOUS EDITIONS OF THIS FORM ARE OBSOLETE