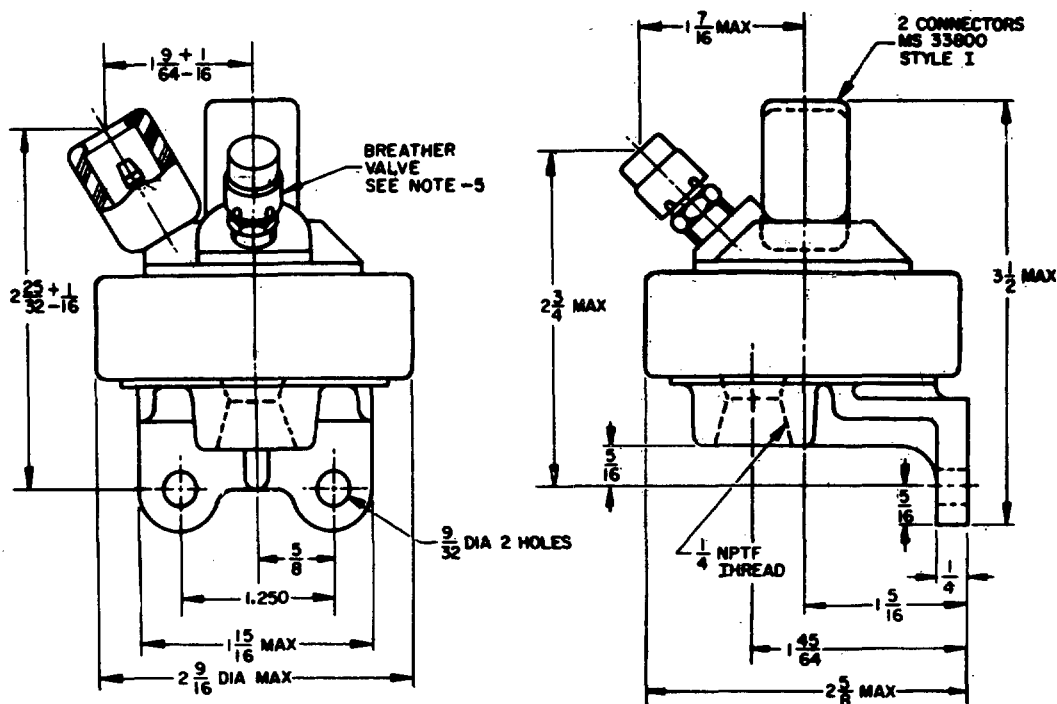


FED. SUP CLASS  
5930

## NOTES:

1. TYPE II (SUFFICIENTLY HIGH PRESSURE CLOSURES CONTACTS) GRADE A (WATERPROOF) OF PROCUREMENT SPECIFICATION.
2. SWITCH CONTACTS SHALL CLOSE FROM 2 TO 5 PSI (ACTUATING PRESSURE) AND REMAIN CLOSED WITH INCREASING PRESSURE.
3. SWITCH SHALL WITHSTAND OVERLOAD PRESSURE OF 150 PSI.
- ④ 4. SWITCH CONTACT RATING AT 24 VOLTS DC: RESISTIVE LOAD 3 AMPS.
5. ALTERNATE INTERNAL BREATHER VALVE (BALL CHECK TYPE) MAY BE USED WITHIN THE CONFINES OF THE SWITCH DIMENSIONS.
6. UNLESS OTHERWISE SPECIFIED, DIMENSIONS ARE IN INCHES, TOLERANCES ARE  $\pm 1/32$  ON FRACTIONS,  $\pm .005$  ON DECIMALS.
7. FOR DESIGN FEATURE PURPOSES, THIS STANDARD TAKES PRECEDENCE OVER PROCUREMENT DOCUMENT REFERENCED HEREIN.
8. REFERENCED DOCUMENTS SHALL BE OF THE ISSUE IN EFFECT ON DATE OF INVITATION FOR BID.
9. THIS STANDARD IS NOT INTENDED TO LIMIT CONSTRUCTION TO FEATURES OTHER THAN AS SHOWN BY DIMENSIONS, NOTATIONS OR REFERENCED DOCUMENTS.

This standard has been approved by the Army and is mandatory for use by all other military activities are required to comply with this standard where suitable.

P.A. AT  
Other Cust

TITLE

**SWITCH, PRESSURE-STOPLIGHT,  
VEHICULAR, AIR BRAKE SYSTEM,  
24 VOLT, WATERPROOF**

PROCUREMENT SPECIFICATION  
MIL-S-12211

SUPERSEDES

MS PART NO.	FORMER PART NO.
MS 75062 -I	ORD 7064400

MILITARY STANDARD

**MS75062** (AT)

SHEET 1 OF 1