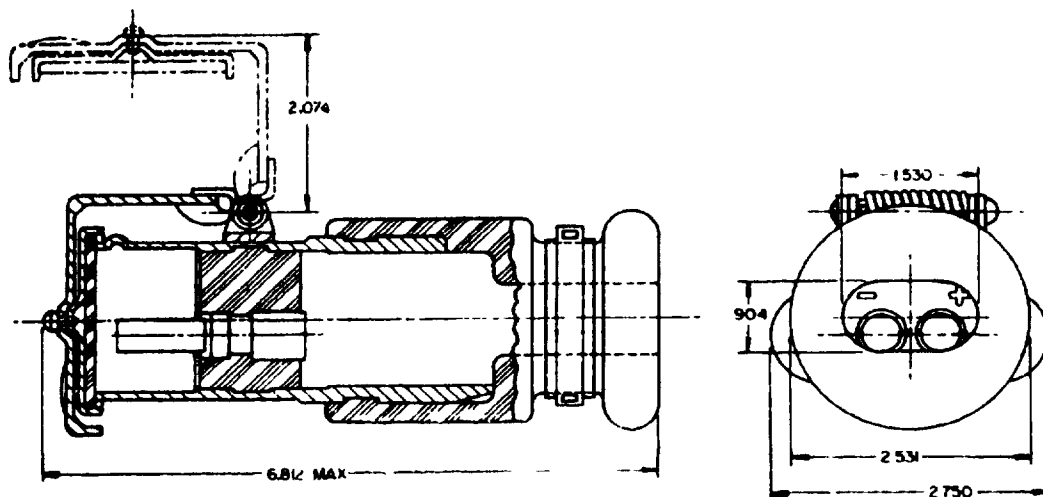


FED SUP CLASS  
5935

## NOTES:

1. FOR MATING RECEPTACLE SEE MS 75058.
2. CONTACT CURRENT RATING IS 245 AMPS.
3. TERMINALS SHALL WITHSTAND A MINIMUM VOLTAGE DIFFERENCE OF 440 VOLTS RMS 60 CPS.
4. DIMENSIONS SHOWN ARE IN INCHES AND FOR ENGINEERING REFERENCE ONLY.
5. MARKING SHALL CONSIST OF THE MS PART NUMBER AND MANUFACTURER'S IDENTIFICATION IN ACCORDANCE WITH MIL-STD-130.
6. FOR DESIGN FEATURE PURPOSES, THIS STANDARD TAKES PRECEDENCE OVER PROCUREMENT DOCUMENTS REFERENCED HEREIN.
7. REFERENCED DOCUMENTS SHALL BE OF THE ISSUE IN EFFECT ON DATE OF INVITATIONS FOR BID.
8. DETAILS OF THIS ASSEMBLY SHALL BE IN ACCORDANCE WITH REFERENCED DRAWINGS (SEE ENGINEERING PARTS LISTS EPL 7728882) AND MAY BE OBTAINED FROM U. S. ARMY TANK-AUTOMOTIVE CENTER, WARREN, MICHIGAN, ATTENTION: STANDARDIZATION BRANCH, SMOTA-RSS.2.

Ⓐ INACTIVE FOR NEW DESIGN AFTER 25 MAY 1973

USE ORDNANCE DRAWING 11682338  
PROCUREMENT SPECIFICATION MIL-C-62122

This drawing has been approved by the Department of the Army and is mandatory for use by all Army activities. All other activities are required to use this drawing as a standard where suitable.

P A MO Other Cust	TITLE CONNECTOR, PLUG, ELECTRICAL-SLAVE, 2 CONTACT, 24 VOLT, WATERPROOF	MS PART NO MS 75057-1	ORD DWG NO C 7728882
PROCUREMENT SPECIFICATION NONE	SUPERSEDES	MILITARY STANDARD <b>MS 75057(AT)</b> SHEET 1 OF 1	

DD FORM 672-1 (Limited reclassification)

PREVIOUS EDITIONS OF THIS FORM ARE OBSOLETE

APPROVED 13 SEPTEMBER 1963 REVISED ② 25 MAY 1973