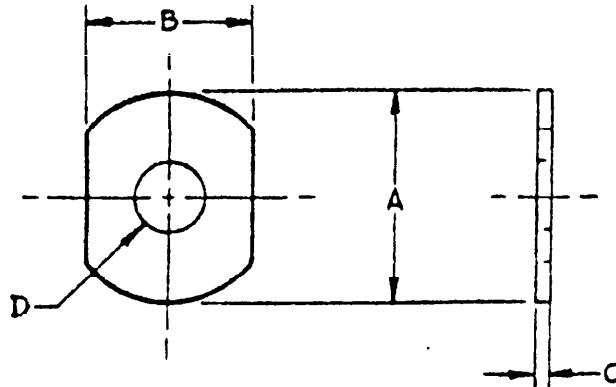


110 SUP CLASS
6150


DASH NO.	DIMENSIONS			
	A	B	C	D
-1	.750 ± .020	.600 ± .020	.062 ± .005	.203 ± .010 DIA
-2	.500 ± .020	.400 ± .020	.062 ± .005	.177 ± .010 DIA

MATERIAL: STAINLESS STEEL
Unless otherwise specified
Dimensions are in inches

NOTE: When Component drawings, specifications, or other data are used for any purpose other than as a reference, the user is responsible for any errors or omissions. The user is also responsible for any errors or omissions in the original drawing, specification, or other data. The user is also responsible for any errors or omissions in the original drawing, specification, or other data. The user is also responsible for any errors or omissions in the original drawing, specification, or other data.

This standard has been approved by the SIGNAL CORPS
Department of the ARMY and is mandatory for use by
that agency. All other military activities are required
to comply with standard when applicable.

P.A. Signal Corps	TITLE	MILITARY STANDARD
Other Code	WASHER	MS 750 45 (SigC)
Procurement Specification MIL-B-35110(SigC)	SUPERSEDES	SHEET 1 OF 1

DD FORM 672 (Limited coordination) PREVIOUS EDITIONS OF THIS FORM ARE OBSOLETE.

APPROVED 5 MARCH 1962 REVISED (A) 2 APRIL 1962