

INCH-POUND

MS75029K

10 Feb 1992

SUPERSEDING

MS75029J

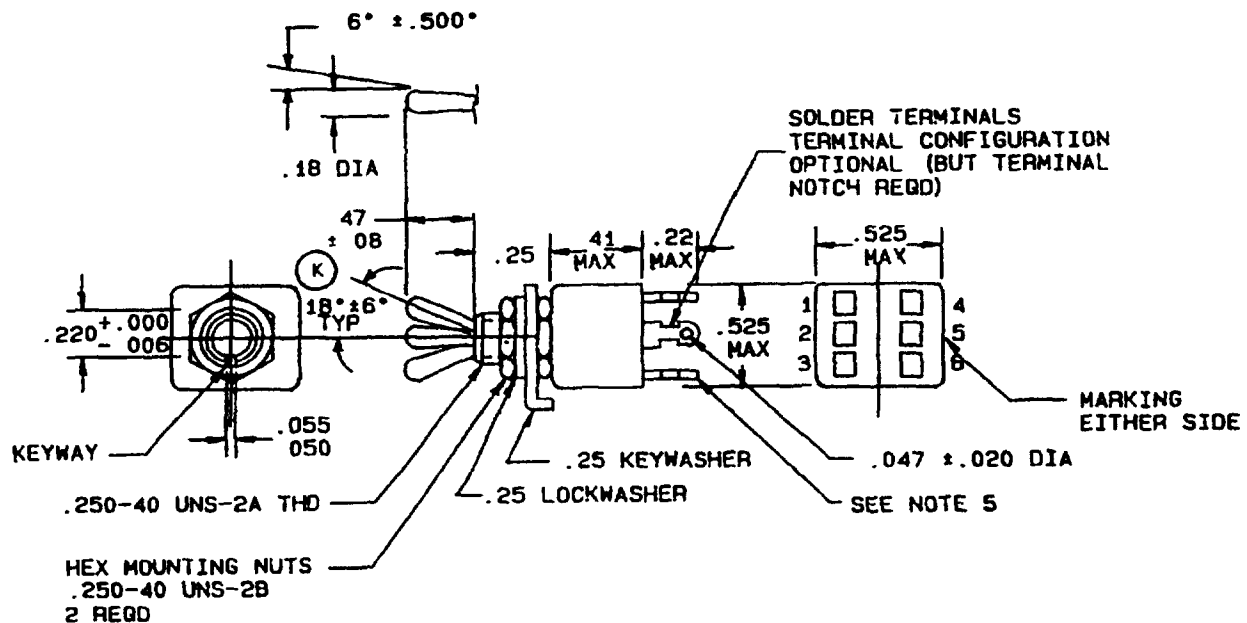
18 June 1990

MILITARY SPECIFICATION SHEET

SWITCH, TOGGLE, TWO POLE, UNSEALED

This specification is approved for use by all Departments and Agencies of the Department of Defense.

The requirements for acquiring the product described herein shall consist of this specification sheet and the issue of the following specification listed in that issue of the Department of Defense Index of Specifications and Standards (DODISS) specified in the solicitation: MIL-S-83731.



KEYWASHER
 MATERIAL: STEEL, QQ-S-698
 FINISH: CAD PL, QQ-P-416
 TYPE II, CLASS 3
 TOLERANCES ± .003 AND NOTED

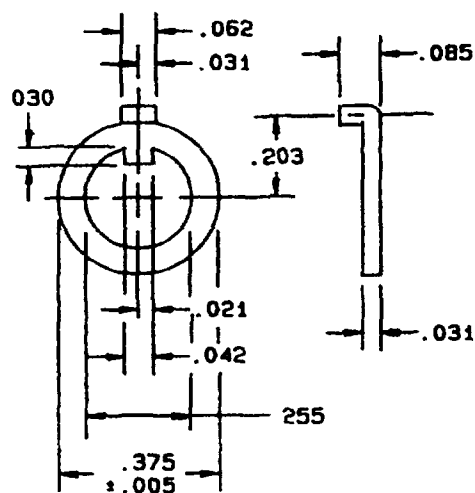


FIGURE 1. Dimensions and configurations

(K) denotes changes

MS75029K

Inches	mm		Inches	mm
.003	.08		.085	2.0
.005	.13		.18	4.57
.006	.15		.203	5.16
.020	.51		.220	5.59
.021	.53		.22	5.6
.031	.79		.250	6.35
.042	1.07		.255	6.48
.047	1.19		.375	9.53
.050	1.27		.41	10.4
.055	1.40		.47	11.9
.062	1.57		.525	13.34
.08	2.0			

NOTES

- 1 Dimensions are in inches
- 2 Metric equivalents are given for general information only.
- 3 Unless otherwise specified, tolerances are $\pm .020$ on two place decimals and $\pm .005$ on three place decimals
- 4 For hardware detail specifications, see appendix, MIL-S-83731, and herein
- 5 Terminals 3 and 6 are not supplied on DPST switch (MS75029-22)

FIGURE 1 Dimensions and configurations - Continued

MS75029K

REQUIREMENTS.

Dimensions and configuration. See figure 1

Switching characteristics See table I.

TABLE I. Switching characteristics.

MS Part or Identifying Number (PIN)	Circuit with toggle lever in		
	Down position (keying side)	Center position	Up position (opposite keying)
MS75029-21	ON	OFF	ON
MS75029-22	OFF	NONE	ON
MS75029-23	ON	NONE	ON
MS75029-26	MOM ON	NONE	ON
MS75029-27	MOM ON	OFF	MOM ON
MS75029-31	MOM ON	OFF	ON

Switches specified herein are designed so that the movement of the switch mechanism is opposite the toggle lever, with the exception if -22 and -23 in which the toggle movement is the same as the switch mechanism.

Weight: .02 pound max

Electrical ratings

At 30 V dc

Resistive load: 5.0 amperes.

Inductive load. 2.0 amperes

Lamp load: 1.0 ampere

At 115 V ac, 400 Hz

Resistive load: 5.0 amperes

Inductive load. 2.0 amperes

Lamp load: 1.0 ampere.

Strength of pivot and lever stop 12 pounds minimum for lever and 7.2 pounds minimum for pivot

Sand and dust Toggle boot shall be used in meeting sand and dust test

Marking Marking, including terminal marking, may be on either side of the switch.

MS75029K

CONCLUDING MATERIAL

Custodians
Army - ER
Navy - EC
Air Force - 85

Review activity
Army - AV
Navy - AS
Air Force - 99
DLA - ES

Preparing activity
Air Force - 85

Agent.
DLA - ES

(Project 5930-1495-02)