

**INCH-POUND**

MS75028K

21 July 2005

SUPERSEDING

MS75028J

10 February 1992

## MILITARY SPECIFICATION SHEET

SWITCH, TOGGLE, ONE POLE, UNSEALED

INACTIVE FOR NEW DESIGN,  
DATED 8 MARCH 1999

This specification is approved for use by all Departments  
and Agencies of the Department of Defense.

The requirements for acquiring the product described herein shall consist  
of this specification sheet and MIL-DTL-83731.

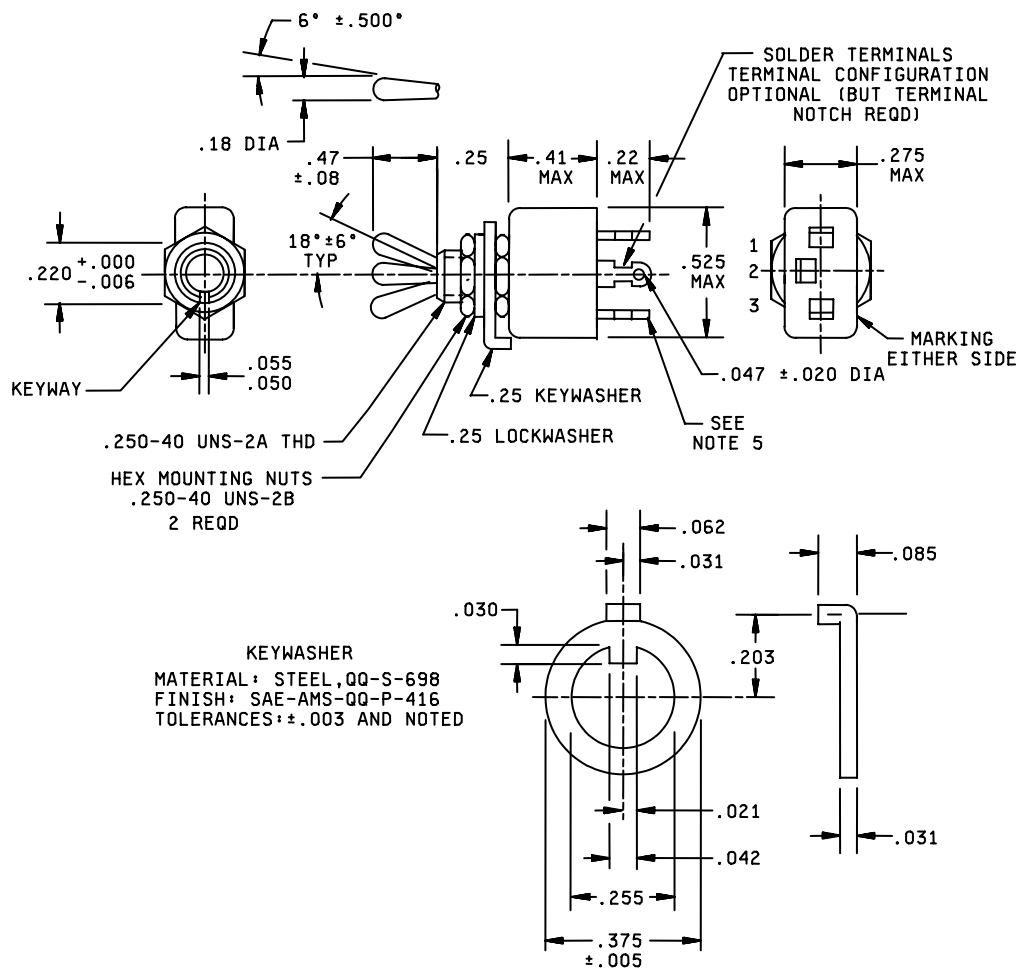


FIGURE 1. Dimensions and configurations.

## MS75028K

<u>Inches</u>	<u>mm</u>	<u>Inches</u>	<u>mm</u>	<u>Inches</u>	<u>mm</u>	<u>Inches</u>	<u>mm</u>	<u>Inches</u>	<u>mm</u>	<u>Inches</u>	<u>mm</u>
0.003	0.08	0.021	0.53	0.047	1.19	0.080	2.00	0.220	5.59	0.375	9.53
0.005	0.13	0.030	0.76	0.050	1.27	0.085	2.00	0.250	6.35	0.410	10.40
0.006	0.15	0.031	0.79	0.055	1.40	0.180	4.60	0.255	6.48	0.470	11.90
0.020	0.51	0.042	1.07	0.062	1.57	0.203	5.16	0.275	6.99	0.525	13.40

## NOTES:

1. Dimensions are in inches.
2. Metric equivalents are given for general information only.
3. Unless otherwise specified, tolerances are  $\pm 0.020$  on two place decimals and  $\pm 0.005$  on three place decimals.
4. For hardware detail specifications, see appendix of MIL-DTL-83731, and herein.
5. Terminal 3 is not supplied on SPST switch (MS75028-22).

FIGURE 1. Dimensions and configurations - Continued.

## REQUIREMENTS:

Dimensions and configuration: See figure 1.

Switching characteristics: See table I.

TABLE I. Switching characteristics.

MS Part or Identifying Number (PIN)	Circuit with toggle lever in		
	Down position (keying side)	Center position	Up position (opposite keying)
MS75028-21	ON	OFF	ON
MS75028-22	OFF	NONE	ON
MS75028-23	ON	NONE	ON
MS75028-26	MOM ON	NONE	ON
MS75028-27	MOM ON	OFF	MOM ON
MS75028-31	MOM ON	OFF	ON

Switches, as specified herein, are designed so that the movement of the switch mechanism is opposite the toggle lever, with the exception if -22 and -23 in which the toggle movement is the same as the switch mechanism.

Weight: .015 pound max.

Electrical ratings:

At 30.0 V dc:

Resistive load: 5.0 amperes.

Inductive load: 2.0 amperes.

Lamp load: 1.0 ampere.

## MS75028K

At 115.0 V ac, 400 Hz:

Resistive load: 5.0 amperes.

Inductive load: 2.0 amperes.

Lamp load: 1.0 ampere.

Strength of pivot and lever stop: 12 pounds minimum for lever and 7.2 pounds minimum for pivot.

Sand and dust: Toggle boot shall be used in meeting sand and dust test.

Marking: Marking, including terminal marking, may be on either side of the switch.

Marginal notations are not used in this revision to identify changes with respect to the previous issue due to the extent of changes.

### Referenced Documents:

MIL-DTL-83731

QQ-S-698

SAE-AMS-QQ-P-416

### Custodians:

Army - CR

Navy - EC

Air Force - 11

### Preparing activity:

DLA - CC

(Project 5930-1919-000)

NOTE: The activities listed above were interested in this document as of the date of the this document. Since organizations and responsibilities can change, you should verify the currency of the information above using the Assist Online database at <http://assist.daps.dla.mil>.