

INCH-POUND

MS75028J

10 Feb 1992

SUPERSEDING

MS75028H

10 June 1986

MILITARY SPECIFICATION SHEET

SWITCH, TOGGLE, ONE POLE, UNSEALED

This specification is approved for use by all Departments and Agencies of the Department of Defense

The requirements for acquiring the product described herein shall consist of this specification sheet and the issue of the following specification listed in that issue of the Department of Defense Index of Specifications and Standards (DODISS) specified in the solicitation: MIL-S-83731

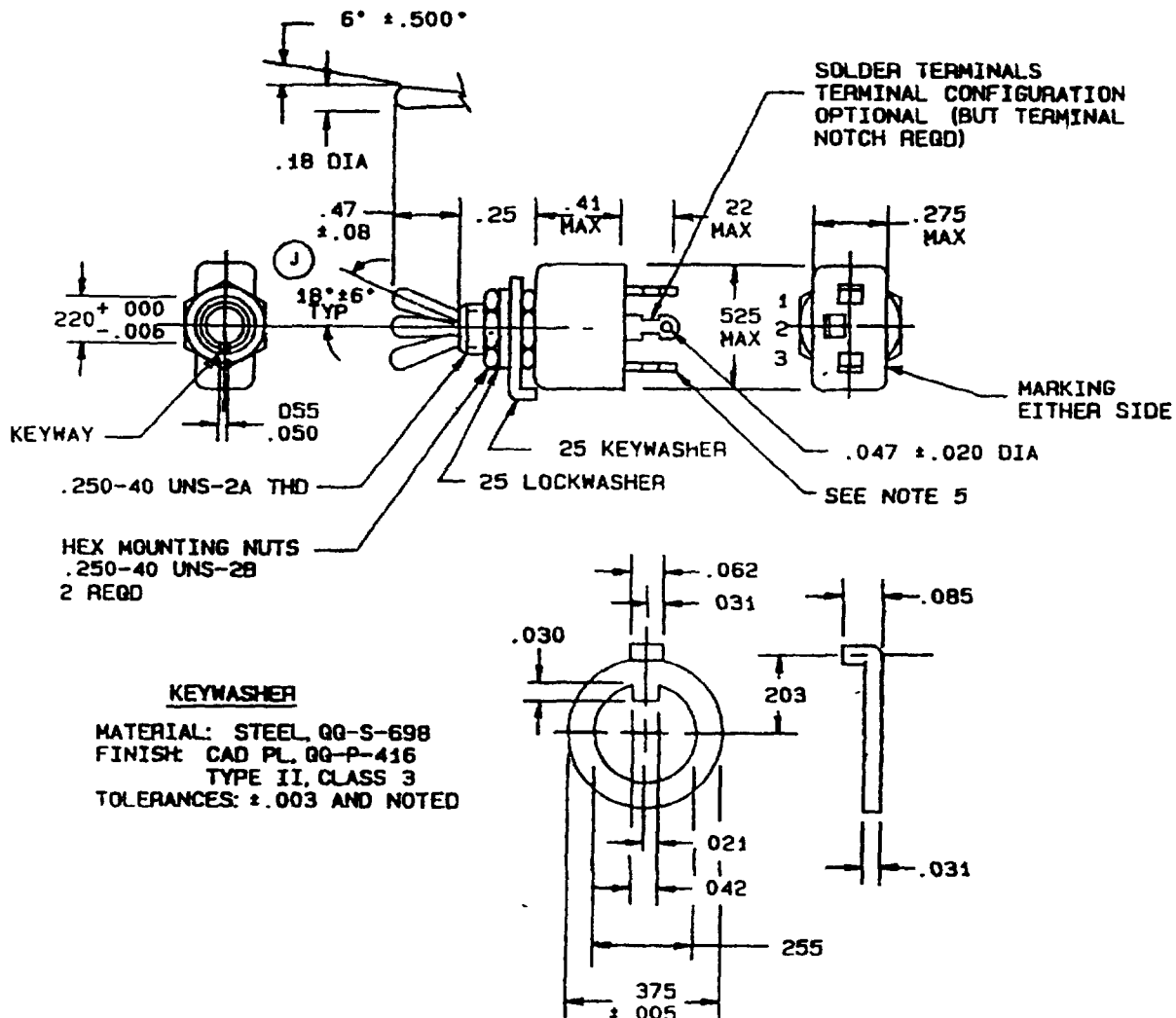


FIGURE 1 Dimensions and configurations

(J) denotes changes

MS75028J

Inches	mm		Inches	mm
003	08		085	2 0
005	13		18	4 6
006	15		203	5 16
020	51		.220	5 59
021	53		.25	6 35
030	76		255	6 48
031	79		275	6 99
042	1 07		375	9 53
047	1 19		41	10 4
050	1 27		47	11 9
055	1 40		.525	13 4
062	1 57			
08	2 0			

NOTES

- 1 Dimensions are in inches
- 2 Metric equivalents are given for general information only
- 3 Unless otherwise specified, tolerances are $\pm .020$ on two place decimals and $\pm .005$ on three place decimals.
- 4 For hardware detail specifications, see appendix, MIL-S-83731, and herein
- 5 Terminal 3 is not supplied on SPST switch (MS75028-22)

FIGURE 1 Dimensions and configurations - Continued

MS75028J

REQUIREMENTS.

Dimensions and configuration See figure 1

Switching characteristics See table I

TABLE I Switching characteristics.

MS Part or Identifying Number (PIN)	Circuit with toggle lever in		
	Down position (keying side)	Center position	Up position (opposite keying)
MS75028-21	ON	OFF	ON
MS75028-22	OFF	NONE	ON
MS75028-23	ON	NONE	ON
MS75028-26	MOM ON	NONE	ON
MS75028-27	MOM ON	OFF	MOM ON
MS75028-31	MOM ON	OFF	ON

Switches, as specified herein, are designed so that the movement of the switch mechanism is opposite the toggle lever, with the exception if -22 and -23 in which the toggle movement is the same as the switch mechanism.

Weight 015 pound max

Electrical ratings

At 30 0 V dc

Resistive load: 5 0 amperes

Inductive load: 2.0 amperes

Lamp load 1.0 ampere

At 115 0 V ac, 400 Hz.

Resistive load: 5 0 amperes.

Inductive load 2.0 amperes

Lamp load 1 0 ampere

Strength of pivot and lever stop 12 pounds minimum for lever and 7 2 pounds minimum for pivot

Sand and dust Toggle boot shall be used in meeting sand and dust test

Marking Marking, including terminal marking, may be on either side of the switch

MS75028J

CONCLUDING MATERIAL

Custodians

Army - ER

Navy - EC

Air Force - 85

Review activity

Army - AV

Navy - AS

Air Force - 99

DLA - ES

Preparing activity.

Air Force - 85

Agent

DLA - ES

(Project 5930-1495-01)