

FED. SUP CLASS
6140

Reviewer/user information is current as of the date of this document. For future coordination of changes to this document, draft circulation should be based on the information in the current DODISS(FSC Listing) Army-MS O MI O

This standard has been approved by the ELECTRONICS COMMAND Department of the Army and is mandatory for use by test activity. All other military activities are required to employ this standard where suitable.

ELECTRICAL AND PHYSICAL REQUIREMENTS

CLASS

VENTED CELL BATTERY

Voltages	
Nominal	6.0 volts
Final	5.0 volts
Rated capacity	14.0 A.H.
Normal charge rates *	
Start (0.33C _g)	4.6 amps
Finish (0.17C _g)	2.4 amps
Normal Discharge Rate (0.2C _g)	2.8 amps
Weight (max.)	7.0 lbs.
Vent Release pressure	6.0 ± 0.5 psi
Number and type of cells	5 ea. BB-48B

- * Charge at starting rate till charging voltage reaches 7.2V, continue to charge at finishing rate for 2 hours.

Test	Test Para.	Requirement
Full charge capacity	4.10.1	14.0 A.H.
Low temp. test	4.10.3	
Test II	4.10.3.2	
Vibration	4.20	
Low freq.	4.20.1	14.0 A.H.
Mechanical shock	4.16	14.0 A.H.
Cycle life test	4.15	
Test I	4.15.1	1500 cycles
Test II	4.15.2	308 cycles
Retention of charge		
Test I	4.17.1	11.2 A.H.
Test II	4.17.2	5.6 A.H.

(D) For changes see Sheets 1, 2 and 3.

P.A. EL Internat'l Interest	TITLE	MILITARY STANDARD
Other Cust (See Note 12)	BATTERY, STORAGE, BB-429/U	MS 75026 (EL)
Procurement Specification MIL-D-55118(S1-C)	SUPERSEDES:	SHEET 1 OF 3

DD FORM 672 (Coordinated)

EDITION OF 1 SEP 57 MAY BE USED.

DATE

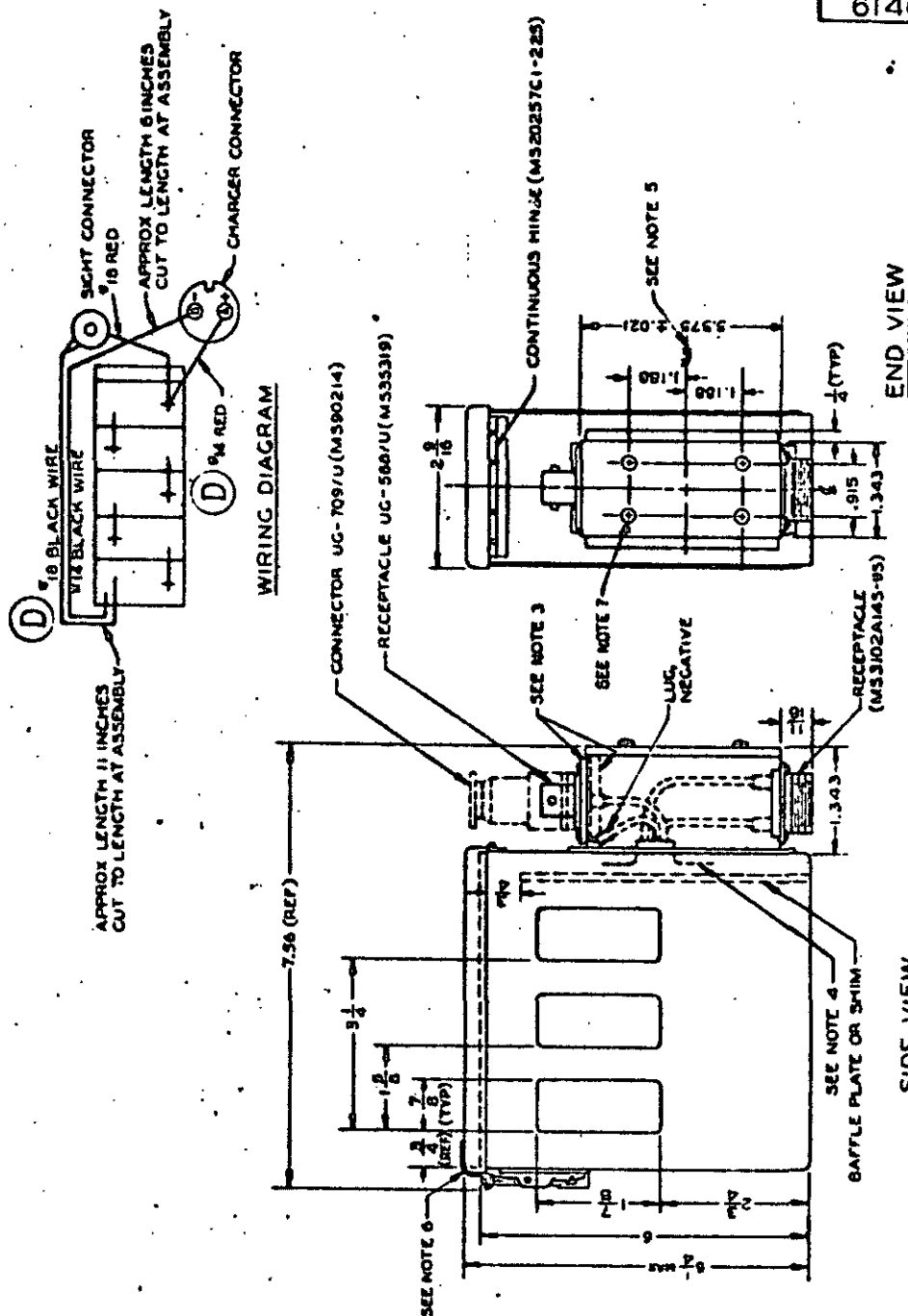
NOTES TO PRINTER: REDUCE BORDER TO 4-17-11-0-3/4". PRINT LEFT BORDER LINE ONE INCH FROM LEFT EDGE OF 11-10" SHEET. PRINT BOTTOM BORDER LINE 1/4 INCH FROM BOTTOM EDGE OF 11-10" SHEET. SIGNATURE FORM NOT TO BE INCLUDED ON 11-10" SHEET.

DRAWN BY _____
 TYPED BY _____
 CHECKED BY _____

Incl 1'

S/S

APPROVED 10 FEBRUARY 1961 REVISED 28 JUL 61 25 MAR 62 5 JUN 68 7 DEC 68 5 NOV 75



P.A. EL Other Code:	TITLE BATTERY, STORAGE, BB - 429/U	MILITARY STANDARD MS 75026 (EL)
PROCUREMENT SPECIFICATION	SUPERSEDES	SHEET 2 OF 3

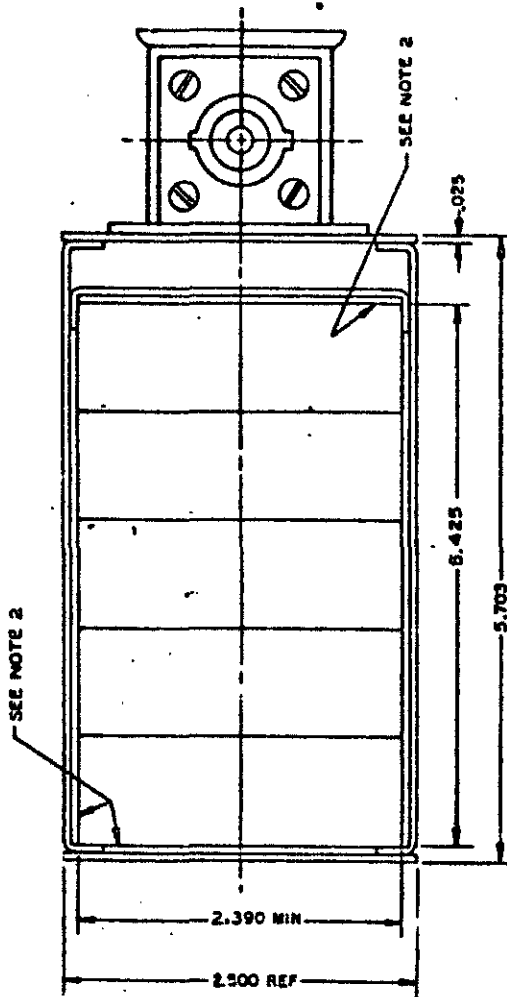
DD FORM 672-1 (Rev. 5-62)

Previous editions of the code are hereby

NOTES TO PRINTER: REDUCE BORDER TO 4-27/32"=9-3/4". PRINT LEFT
BORDER--LINE ONE INCH FROM LEFT EDGE OF 8-10-1/2 SHEET.
PRINT BOTTOM BORDER LINE 3/8 INCH FROM BOTTOM EDGE OF 8-10-1/2
SHEET. SIGNATURE FORM NOT TO BE INCLUDED ON 8-10-1/2 SHEET.

DRAWN BY _____
TYPED BY _____
CHECKED BY _____

DATE

FED. SUP CLASS
6140

TOP VIEW WITHOUT COVER

NOTES

1. All dimensions are in inches. Unless otherwise specified, tolerances are $\pm 1/64$ on fractions, ± 0.015 on decimals.
2. Plastic flange for assembly, where required shall conform to specification L-4-512, Type 1, Class 1, Grade 1.
3. Polyethylene or rubber gasket.
4. Center of connector pin and cover.
5. Center of connector pin and cover.
6. Center of connector pin and cover.
7. All dimensions shall be consistent with the minimum thickness of .025 (24 gage).
8. Case material shall be epoxy coated to a minimum thickness of .007 by the fluidized bed method. The epoxy shall be heat-cured green color, matching chip No. 34007 per FED STD 395.
9. All surfaces of the case shall be epoxy coated to a minimum thickness of .007 by the fluidized bed method. The epoxy shall be heat-cured green color, matching chip No. 34007 per FED STD 395.
10. For design features purposes, this standard shall supersede any previous documents referenced herein.
11. Referenced documents shall be of the issue in effect on date of initiation for bid.
12. Battery, Storage BB 429/U meets the requirements of NATO STANAG No. 2231. Deviations which affect this STANAG cannot be permitted.

REVISED

APPROVED

This standard has been approved by the ELECTRONIC CORPUS Department of the ARMY and is mandatory for use by that activity. All other military activities are required to employ this standard where applicable.

P.A. EL
Other Case

TITLE

BATTERY, STORAGE, BB-429/U

MILITARY STANDARD

MS 75026 (EL)

PROCUREMENT SPECIFICATION

SUPERSEDES

SHEET 3 OF 3

DD FORM 672-1 (Continued)

PREVIOUS EDITIONS OF THIS FORM ARE OBSOLETE.

NOTES TO PRINTER: REDUCE BORDER TO 4-31/32 x 9-3/4. PRINT LEFT BORDER-LINE ONE INCH FROM LEFT EDGE OF 8-10-1/2 SHEET. PRINT BOTTOM BORDER LINE 3/8 INCH FROM BOTTOM EDGE OF 8-10-1/2 SHEET. SIGNATURE FORM NOT TO BE INCLUDED ON 8-10-1/2 SHEET.

DRAWN BY _____
TYPED BY _____
CHECKED BY _____

DATE