

INCH-POUND

MS75009J
w/ AMENDMENT 3
8 August 2008
SUPERSEDING
MS75009J
w/ AMENDMENT 2
8 February 2007

DETAIL SPECIFICATION SHEET

BRACKET ASSEMBLY, RESISTOR (POWER TYPE)

This specification is approved for use by all Departments and Agencies of the Department of Defense.

The requirements for acquiring the product described herein shall consist of this specification sheet and the latest issues of [MIL-PRF-26](#), and [MIL-R-19365](#).

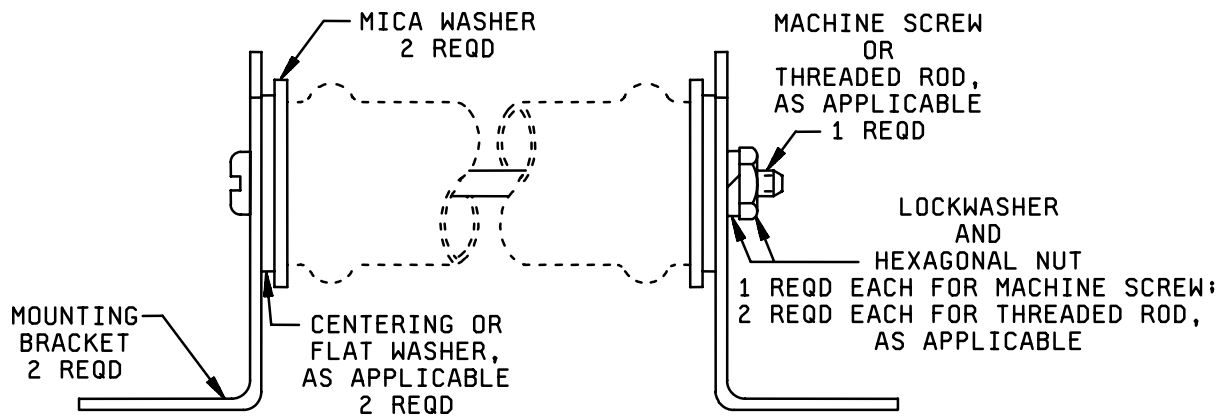


FIGURE 1. Bracket assembly.

MS75009J
w/ AMENDMENT 3

Assembly dash no. 1/	Resistor style		Dash number or MS part or identifying number (PIN)						
	Spec MIL-PRF-26	Spec MIL-R-19365	Mica washer	Centering washer	Flat washer		Mounting bracket	Pan head machine screw 2/	
					Part No. 3/	Dash No.		Part No.	Dash No.
-29	RW29	RX29	-1		MS15795	-807	-7	MS51957 4/	-55
-30	RW30		-2				-7	MS51957 4/	-52
-31	RW31		-2				-7	MS51957 4/	-54
-32	RW32	RX32	-2				-7	MS51957 4/	-56
-33	RW33	RX33	-2				-7	MS75009	-18
-34	RW34		-3	-5			-8	MS75009	-18
-35	RW35	RX35	-3	-5			-8	MS75009	-19
-36	RW36	RX36	-4	-6			-9	MS75009	-19
-37	RW37	RX37	-4	-6			-9	MS75009	-20
-38	RW38	RX38	-4	-6			-9	MS75009	-21
-39	RW39		-4	-6			-9	MS75009	-23
-47	RW47	RX47	-4	-6			-9	MS75009	-22

Assembly dash no. 1/	Resistor style		Dash number or MS part or identifying number (PIN)						
	Spec MIL-PRF-26	Spec MIL-R-19365	Threaded rod 2/		Hexagonal nut		Lock washer 5/		Phosphor bronze
			Part No.	Dash No.	Part No. 6/	Dash No.	Corrosion resisting steel Part No. 7/	Dash No.	
-29	RW29	RX29			MS35649	-284	MS35338	-137 or -156	-16
-30	RW30						MS35338		-16
-31	RW31						MS35338		-16
-32	RW32	RX32					MS35338		-16
-33	RW33	RX33	MS75009	-10			MS35338		-16
-34	RW34		MS75009	-10	MS35650	-304	MS35338	-138 or -157	-17
-35	RW35	RX35	MS75009	-11			MS35338		-17
-36	RW36	RX36	MS75009	-11			MS35338		-17
-37	RW37	RX37	MS75009	-12			MS35338		-17
-38	RW38	RX38	MS75009	-13			MS35338		-17
-39	RW39		MS75009	-15			MS35338		-17
-47	RW47	RX47	MS75009	-14			MS35338		-17

1/ The dash number added to the military-specification number constitutes the MS PIN of the assembly. The dash number is derived from the style number of the resistor; for example, MS75009-29 is derived from RW29 and RX29.

2/ Use of either pan head machine screw or threaded rod optional, where applicable.

3/ Specification number is [NASM15795](#)

4/ Specification number is [MS51957](#)

5/ Use of either corrosion-resisting-steel or phosphor-bronze lock washer(s) is optional.

6/ Specification numbers are [NASM35649](#) or [NASM35650](#).

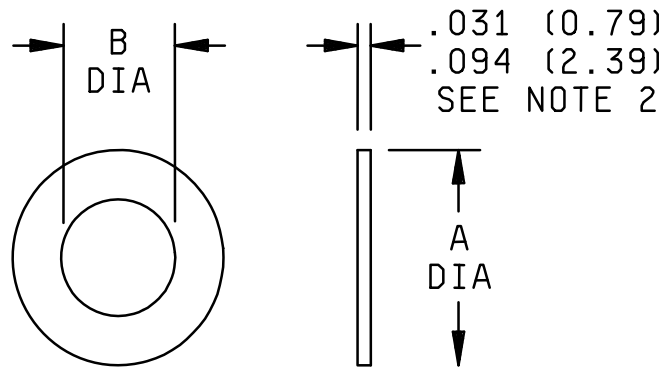
7/ Specification number is [NASM35338](#).

NOTES:

- Referenced documents shall be of the issue in effect on date of invitations for bid.
- For design feature purposes, this specification sheet takes precedence over acquisition documents referenced herein.

FIGURE 1. Bracket assembly - Continued.

MS75009J
w/ AMENDMENT 3



<u>Inches</u>	<u>mm</u>	<u>Inches</u>	<u>mm</u>	<u>Inches</u>	<u>mm</u>	<u>Inches</u>	<u>mm</u>	<u>Inches</u>	<u>mm</u>
.015	.38	.094	2.39	.469	11.91	.688	17.48	1.000	25.40
.031	.79	.195	4.95	.500	12.70	.750	19.05	1.375	34.93

Dash No. 1/	Mica washer dimension	
	A	B
-1	.469	.195
-2	.750	.195
-3	1.000	.500
-4	1.375	.688

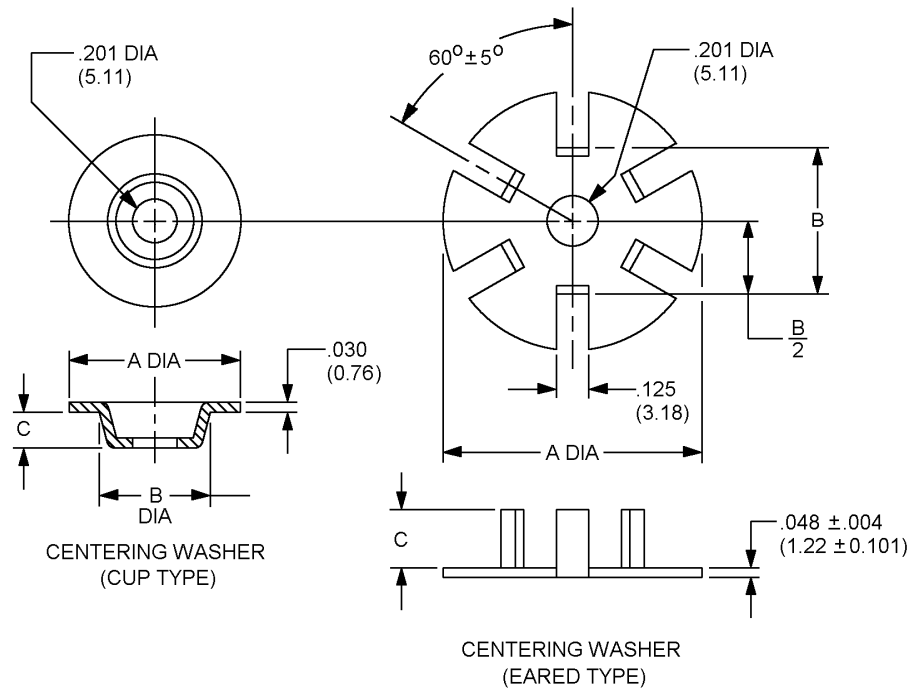
1/ The dash number added to the military specification number constitutes the MS PIN; for example: MS75009-1.

NOTES

1. Dimensions are in inches. The washer may consist of several sheets to obtain minimum thickness.
2. Metric equivalents are given for general information only.
3. Referenced documents shall be of the issue in effect on date of invitations for bid.
4. For design feature purposes, this specification sheet takes precedence over acquisition documents referenced herein.

FIGURE 2. Mica washer.

MS75009J
w/ AMENDMENT 3



Inches	mm	Inches	mm	Inches	mm	Inches	mm	Inches	mm
.010	0.25	.045	1.14	.156	3.96	.463	11.76	.750	19.06
.031	0.79	.125	3.18	.250	6.35	.684	17.37	1.125	28.58

Dash no. 1/	Type	Centering washer dimension		
		A	B	C
-5	Cup	.750	.463 $\begin{smallmatrix} +.005 \\ -.000 \end{smallmatrix}$.156
-6	Eared	1.125	.684	.250 $\pm .032$

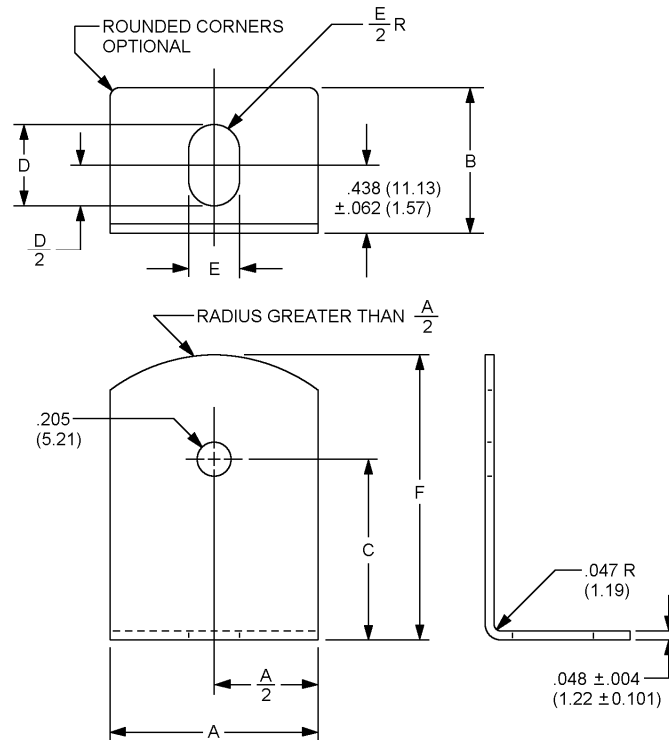
1/ The dash number added to the MS military specification number constitutes the MS part number; for example: MS75009-1.

NOTE:

1. Dimensions are in inches. Metric equivalents are given for general information only.
2. Unless otherwise specified, tolerance is ± 0.010 (0.25 mm) on decimals.
3. Centering washer shall be steel conforming to [QQ-S-698](#), [ASTM-A109/A109M](#), [ASTM A1008/A1008M](#), or [SAE-AMS5040](#), respectively.
4. Referenced documents shall be of the issue in effect on date of invitations for bid.
5. For design feature purposes, this specification sheet takes precedence over acquisition documents referenced herein.

FIGURE 3. Centering washer.

MS75009J
w/ AMENDMENT 3



Inch	mm	Inch	mm	Inch	mm	Inch	mm	Inch	mm
.031	0.79	.281	7.14	.562	14.27	1.000	25.40	1.500	38.10
.062	1.57	.438	11.13	.750	19.05	1.25	31.75	1.750	44.43
.219	5.56	.500	12.70	.875	22.23	1.375	34.93	2.125	53.98

Dash no. 1/	Mounting bracket dimensions					
	A $\pm .062$	B $\pm .062$	C $\pm .062$	D $\pm .062$	E $\pm .031$	F $\pm .062$
-7	.500	.750	1.00	.438	.219	1.375
-8	.750	.750	1.250	.438	.219	1.750
-9	1.250	.875	1.500	.562	.281	2.125

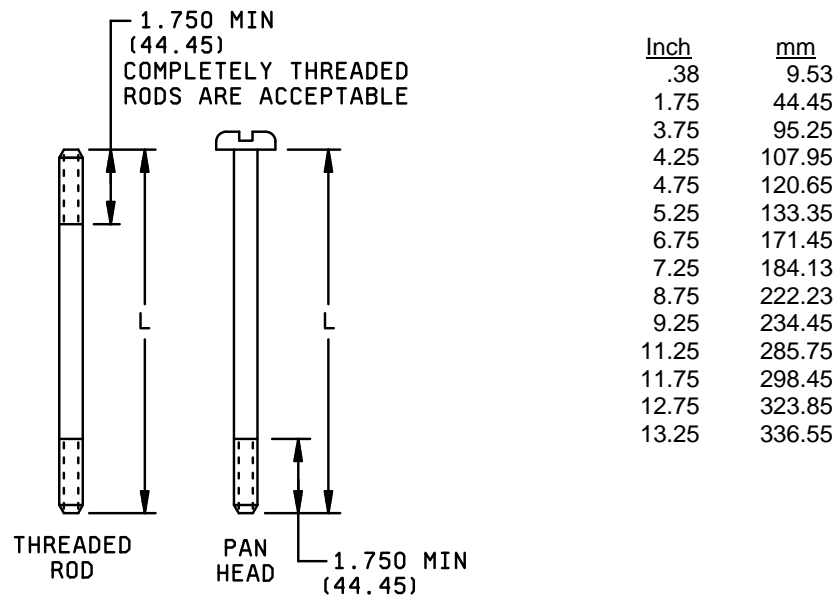
1/ The dash number added to the military-specification number constitutes the MS PIN; for example: MS75009-1.

NOTES

1. Dimensions are in inches. Metric equivalents are given for general information only.
2. Unless otherwise specified, tolerance is ± 0.005 (0.13 mm) on decimals.
3. Mounting bracket shall be steel conforming to [QQ-S-698](#), [ASTM-A109/A109M](#), [ASTM A1008/A1008M](#), or [SAE-AMS5040](#), respectively.
4. Referenced documents shall be of the issue in effect on date of invitations for bid.
5. For design feature purposes, this specification sheet takes precedence over acquisition documents referenced herein.

FIGURE 4. Mounting bracket.

MS75009J
w/ AMENDMENT 3



Pan head machine screw dash no. <u>1/</u>	Threaded rod dash no. <u>1/</u>	Dimensions		
		L <u>2/</u> (approx)		Screw thread
		Screw	Rod	
-18	-10	3.750	4.250	.164-32 UNC-2A (number 8)
-19	-11	4.760	5.250	.190-32 UNF-2A (number 10)
-20	-12	6.750	7.250	
-21	-13	8.750	9.250	
-22	-14	11.250	11.750	
-23	-15	12.750	13.250	

1/ The dash number added to the military-specification number constitutes the MS PIN; for example: MS75009-1.

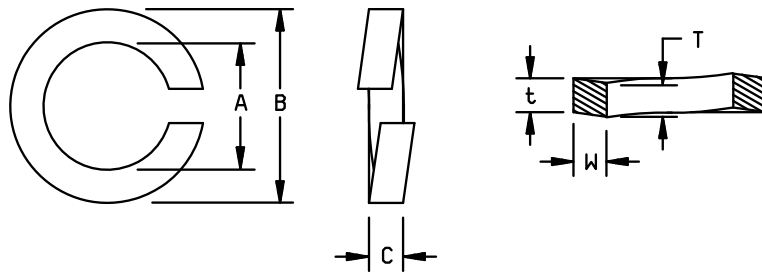
2/ When assembled, not less than 1.5 threads nor more than 0.38 inch of thread shall extend beyond each nut.

NOTES:

- Dimensions are in inches. Metric equivalents are given for general information only.
- Unless otherwise specified, tolerance is ± 0.005 (0.13 mm) on decimals.
- Pan Head machine screws not covered by [MS51957](#) and threaded rods shall be carbon-steel or carbon steel conforming to [ASTM-A108](#), [ASTM-A575](#), [ASTM-A576](#), [ASTM-A1008/A1008M](#), or [ASTM-A675](#), respectively.
- Threaded parts shall be in accordance with [FED-STD-H28](#).
- Referenced documents shall be of the issue in effect on date of invitations for bid.
- For design feature purposes, this specification sheet takes precedence over acquisition documents referenced herein.

FIGURE 5. Rods.

MS75009J
w/ AMENDMENT 3



PHOSPHOR-BRONZE LOCKWASHER

<u>Inch</u>	<u>mm</u>	<u>Inch</u>	<u>mm</u>	<u>Inch</u>	<u>mm</u>	<u>Inch</u>	<u>mm</u>	<u>Inch</u>	<u>mm</u>
.040	1.02	.055	1.40	.168	4.27	.194	4.93	.337	8.56
.046	1.17	.062	1.57	.178	4.52	.205	5.21		
.047	1.19	.164	4.17	.190	4.83	.296	7.52		

Dash No. 1/	Nominal size	Phosphor-bronze-lockwasher dimensions					
		A		B	$C = \frac{T+t}{2}$		W
		Max	Min	Max	Max	Min	Min
-16	No. 8 .164	.178	.168	.296	.046	.040	.055
-17	No. 10 .190	.205	.194	.337	.053	.047	.062

1/ The dash number added to the military-specification number constitutes the MS PIN; for example: MS75009-1.

NOTES:

1. Dimensions are in inches. Metric equivalents are given for general information only.
2. Unless otherwise specified, tolerance is ± 0.005 (0.13 mm) on decimals.
3. Referenced documents shall be of the issue in effect on date of invitations for bid.
4. For design feature purposes, this specification sheet takes precedence over acquisition documents referenced herein.

FIGURE 6. Lockwasher.

MS75009J
w/ AMENDMENT 3

Environmentally preferable material. Environmentally preferable materials should be used to the maximum extent possible to meet the requirements of this specification. As of the dating of this document, the U.S. Environmental Protection Agency (EPA) is focusing efforts on reducing 31 priority chemicals. The list of chemicals is available on their website at <http://www.epa.gov/epaoswer/hazwaste/minimize/chemlist.htm>. Further information is available at the following EPA site: <http://www.epa.gov/epaoswer/hazwaste/minimize/>. Included in the EPA list of 31 priority chemicals are cadmium, lead, and mercury. Use of the materials on the list should be minimized or eliminated unless needed to meet the requirements specified herein.

Amendment notations. The margins of this specification are marked with vertical lines to indicate modifications generated by this amendment. This was done as a convenience only and the Government assumes no liability whatsoever for any inaccuracies in these notations. Bidders and contractors are cautioned to evaluate the requirements of this document based on the entire content irrespective of the marginal notations.

Reference documents. This document references the following:

MIL-PRF-26	SAE-AMS5040
MIL-R-19365	ASTM-A108
NASM15795	ASTM-A109/A109M
MS51957	ASTM A1008/A1008M
QQ-S-698	ASTM-A575
FED-STD-H28	ASTM-A576
	ASTM-A663/A663M
NASM 35338	ASTM-A675/A675M
NASM 35649	
NASM 35650	

Custodians:
Army - CR
Navy - EC
Air Force - 85
DLA - CC

Preparing activity:
DLA - CC

(Project 5905-2008-052)

Review activities:
Army - AR
Navy - AS, MC, OS

NOTE: The activities listed above were interested in this document as of the date of this document, since organization and responsibilities can change; you should verify the currency of the information above using the ASSIST Online database at <http://assist.daps.dla.mil>.