

INCH-POUND

MS75009J
w/ AMENDMENT 1
21 April 2006
SUPERSEDING
MS75009J
16 May 2005

DETAIL SPECIFICATION SHEET

BRACKET ASSEMBLY, RESISTOR (POWER TYPE)

This specification is approved for use by all Departments and Agencies of the Department of Defense.

The requirements for acquiring the product described herein shall consist of this specification sheet and the latest issues of [MIL-PRF-26](#), and [MIL-R-19365](#).

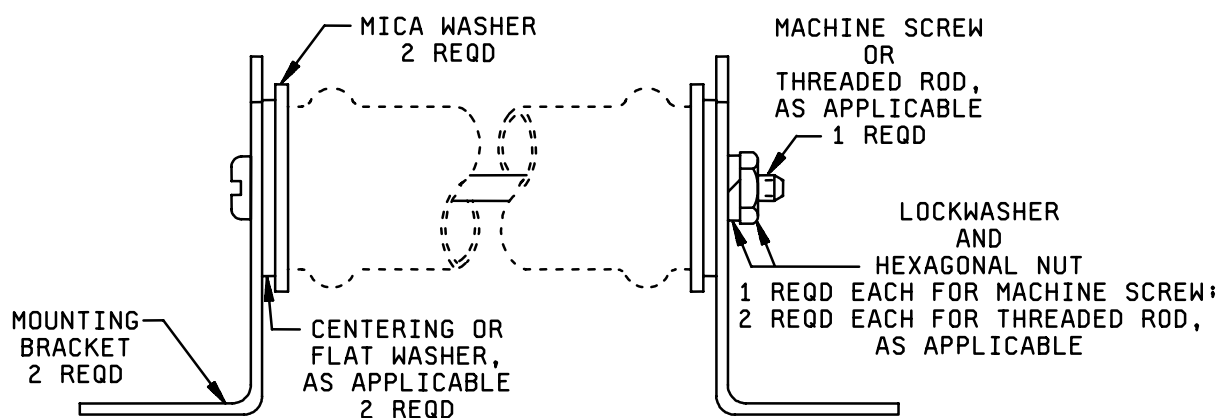


FIGURE 1. Bracket assembly.

MS75009J
w/ AMENDMENT 1

Assembly dash no. 1/	Resistor style		Dash number or MS part or identifying number (PIN)						
	Spec MIL-PRF-26	Spec MIL-R-19365	Mica washer	Centering washer	Flat washer		Mounting bracket	Pan head machine screw 2/	
					Part No. 3/	Dash No.		Part No.	Dash No.
-29	RW29	RX29	-1		MS27183	-7	-7	MS35206 4/	-255
-30	RW30		-2		MS27183	-7	-7	MS35206 4/	-252
-31	RW31		-2		MS27183	-7	-7	MS35206 4/	-254
-32	RW32	RX32	-2		MS27183	-7	-7	MS35206 4/	-256
-33	RW33	RX33	-2		MS27183	-7	-7	MS75009	-18
-34	RW34		-3	-5			-8	MS75009	-18
-35	RW35	RX35	-3	-5			-8	MS75009	-19
-36	RW36	RX36	-4	-6			-9	MS75009	-19
-37	RW37	RX37	-4	-6			-9	MS75009	-20
-38	RW38	RX38	-4	-6			-9	MS75009	-21
-39	RW39		-4	-6			-9	MS75009	-23
-47	RW47	RX47	-4	-6			-9	MS75009	-22

Assembly dash no. 1/	Resistor style		Dash number or MS part or identifying number (PIN)						
	Spec MIL-PRF-26	Spec MIL-R-19365	Threaded rod 2/		Hexagonal nut		Lockwasher 5/		
			Part No.	Dash No.	Part No. 6/	Dash No.	Corrosion resisting steel		Phosphor bronze
-29	RW29	RX29			MS35649	-282	MS35338	-80	-16
-30	RW30				MS35649	-282	MS35338	-80	-16
-31	RW31				MS35649	-282	MS35338	-80	-16
-32	RW32	RX32			MS35649	-282	MS35338	-80	-16
-33	RW33	RX33	MS75009	-10	MS35649	-282	MS35338	-80	-16
-34	RW34		MS75009	-10	MS35649	-282	MS35338	-138 or -157	-17
-35	RW35	RX35	MS75009	-11	MS35650	-302	MS35338	-138 or -157	-17
-36	RW36	RX36	MS75009	-11	MS35650	-302	MS35338	-138 or -157	-17
-37	RW37	RX37	MS75009	-12	MS35650	-302	MS35338	-138 or -157	-17
-38	RW38	RX38	MS75009	-13	MS35650	-302	MS35338	-138 or -157	-17
-39	RW39		MS75009	-15	MS35650	-302	MS35338	-138 or -157	-17
-47	RW47	RX47	MS75009	-14	MS35650	-302	MS35338	-138 or -157	-17

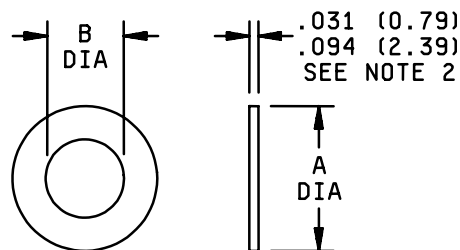
- 1/ The dash number added to the military-specification number constitutes the MS PIN of the assembly. the dash number is derived from the style number of the resistor; for example, MS75009-29 is derived from RW29 and RX29.
- 2/ Use of either pan head machine screw or threaded rod optional, where applicable.
- 3/ Specification number is [MS27183](#).
- 4/ Specification number is [NASM35206](#).
- 5/ Use of either corrosion-resisting-steel or phosphor-bronze lockwasher (s) is optional.
- 6/ Specification numbers are [NASM35649](#) or [NASM35650](#).
- 7/ Specification number is [NASM35338](#).

NOTES:

1. Referenced documents shall be of the issue in effect on date of invitations for bid.
2. For design feature purposes, this specification sheet takes precedence over acquisition documents referenced herein.

FIGURE 1. Bracket assembly - Continued.

MS75009J
w/ AMENDMENT 1



Inches	mm	Inches	mm
.015	0.38	.500	12.70
.031	0.79	.688	17.48
.094	2.39	.750	19.05
.195	4.95	1.000	25.40
.469	11.91	1.375	34.93

Dash No. <u>1</u> /	Mica washer dim.	
	A +.015 -.000	B +.015 -.000
-1	.469	.195
-2	.750	.195
-3	1.000	.500
-4	1.375	.688

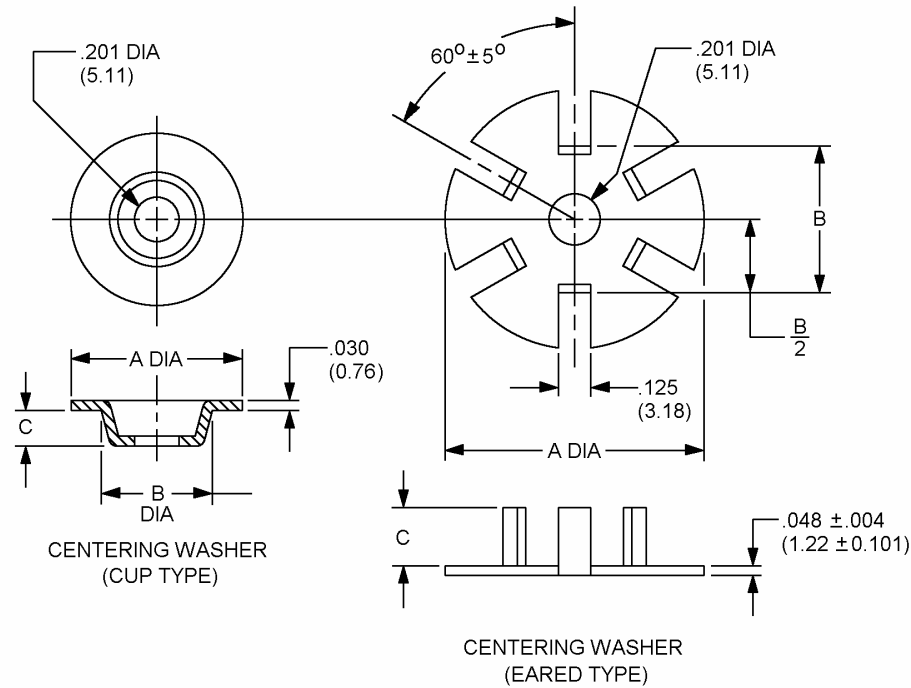
1/ The dash number added to the military-specification number constitutes the MS PIN; for example: MS75009-1.

NOTES

1. Dimensions are in inches.
2. The washer may consist of several sheets to obtain minimum thickness.
3. Metric equivalents are given for general information only.
4. Referenced documents shall be of the issue in effect on date of invitations for bid.
5. For design feature purposes, this specification sheet takes precedence over acquisition documents referenced herein.

FIGURE 2. Mica washer.

MS75009J
w/ AMENDMENT 1



Inches	mm	Inches	mm
.005	0.13	.250	6.35
.031	0.79	.463	11.76
.045	1.14	.684	17.37
.125	3.18	.750	19.06
.156	3.96	1.125	25.58

Dash no. ^{1/}	Type	Centering washer dim.		
		A	B	C
-5	Cup	.750	.463 +.005 -.000	.156
-6	Eared	1.125	.684	.250

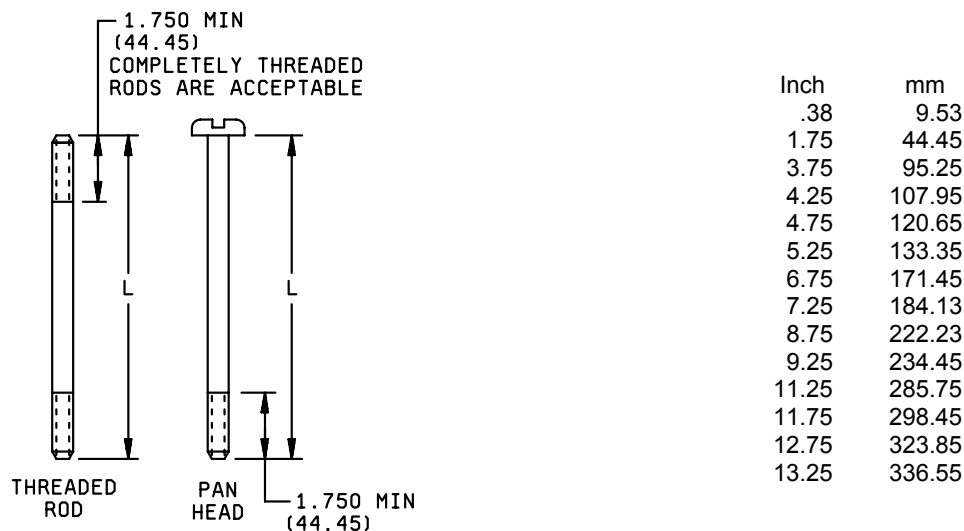
^{1/} The dash number added to the MS military specification number constitutes the MS part number; for example: MS75009-1.

NOTE:

1. Dimensions are in inches.
2. Metric equivalents are given for general information only.
3. Unless otherwise specified, tolerance is ± 0.005 (0.13 mm) on decimals.
4. Centering washer shall be steel conforming to [QQ-S-698](#), [ASTM-A109/A109M](#), [ASTM-A366/A366M](#), or [SAE-AMS5040](#), respectively.
5. Referenced documents shall be of the issue in effect on date of invitations for bid.
6. For design feature purposes, this specification sheet takes precedence over acquisition documents referenced herein.

FIGURE 3. Centering washer.

MS75009J
w/ AMENDMENT 1



Pan head machine screw dash no. <u>1/</u>	Threaded rod dash no. <u>1/</u>	Dimensions		
		L <u>2/</u> (approx)		Screw thread
		Screw	Rod	
-18	-10	3.750	4.250	.164-32 UNC-2A (number 8)
-19	-11	4.760	5.250	
-20	-12	6.750	7.250	
-21	-13	8.750	9.250	.190-32 UNF-2A (number 10)
-22	-14	11.250	11.750	
-23	-15	12.750	13.250	

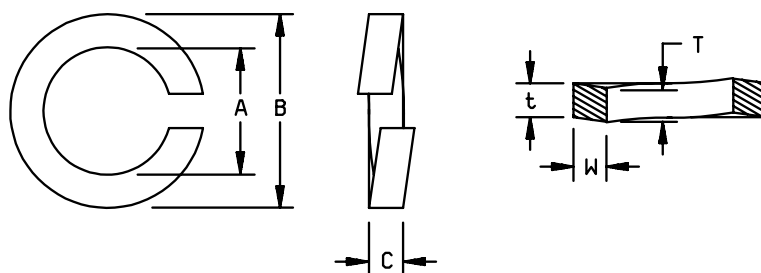
- 1/ The dash number added to the military-specification number constitutes the MS PIN; for example: MS75009-1.
- 2/ When assembled, not less than 1.5 threads nor more than 0.38 inch of thread shall extend beyond each nut.

NOTES:

- Dimensions are in inches.
- Metric equivalents are given for general information only.
- Unless otherwise specified, tolerance is ± 0.005 (0.13 mm) on decimals.
- Pan Head machine screws not covered by [NASM35206](#) and threaded rods shall be carbon-steel wire or carbon steel conforming to [ASTM-A108](#), [ASTM-A575](#), [ASTM-A576](#), [ASTM-A663/A663M](#), or [ASTM-A675](#), respectively.
- Threaded parts shall be in accordance with [FED-STD-H28](#).
- Referenced documents shall be of the issue in effect on date of invitations for bid.
- For design feature purposes, this specification sheet takes precedence over acquisition documents referenced herein.

FIGURE 5. Rods.

MS75009J
w/ AMENDMENT 1



PHOSPHOR-BRONZE LOCKWASHER

Inch	mm
.040	1.02
.046	1.17
.047	1.19
.055	1.40
.062	1.57
.164	4.17
.168	4.27
.178	4.52
.190	4.83
.194	4.93
.205	5.21
.296	7.52
.337	8.56

Dash No. 1/	Nominal size	Phosphor-bronze-lockwasher dimensions					
		A		B	$C = \frac{T+t}{2}$		W
		Max	Min	Max	Max	Min	Min
-16	No. 8 .164	.178	.168	.296	.046	.040	.055
-17	No. 10 .190	.205	.194	.337	.053	.047	.062

1/ The dash number added to the military-specification number constitutes the MS PIN; for example: MS75009-1.

NOTES:

1. Dimensions are in inches.
2. Metric equivalents are given for general information only.
3. Unless otherwise specified, tolerance is ± 0.005 (0.13 mm) on decimals.
4. Referenced documents shall be of the issue in effect on date of invitations for bid.
5. For design feature purposes, this specification sheet takes precedence over acquisition documents referenced herein.

FIGURE 6. Lockwasher.

MS75009J
w/ AMENDMENT 1

Amendment notations. The margins of this specification are marked with vertical lines to indicate modifications generated by this amendment. This was done as a convenience only and the Government assumes no liability whatsoever for any inaccuracies in these notations. Bidders and contractors are cautioned to evaluate the requirements of this document based on the entire content irrespective of the marginal notations.

Reference documents. This document references the following:

MIL-PRF-26	SAE-AMS5040
MIL-R-19365	ASTM-A108
MS27183	ASTM-A109/A109M
QQ-S-698	ASTM-A366/A366M
FED-STD-H28	ASTM-A575
	ASTM-A576
NASM 35206	ASTM-A663/A663M
NASM 35338	ASTM-A675/A675M
NASM 35649	
NASM 35650	

Custodians:

Army - CR
Navy - EC
Air Force - 11

Preparing activity:

DLA - CC

(Project 5905-2006-033)

Review activities:

Army - AR
Navy - AS, MC, OS

NOTE: The activities listed above were interested in this document as of the date of this document, since organization and responsibilities can change; you should verify the currency of the information above using the ASSIST Online database at <http://assist.daps.dla.mil>.