

INCH-POUND

MS75009J

16 May 2005

SUPERSEDING

MS75009H

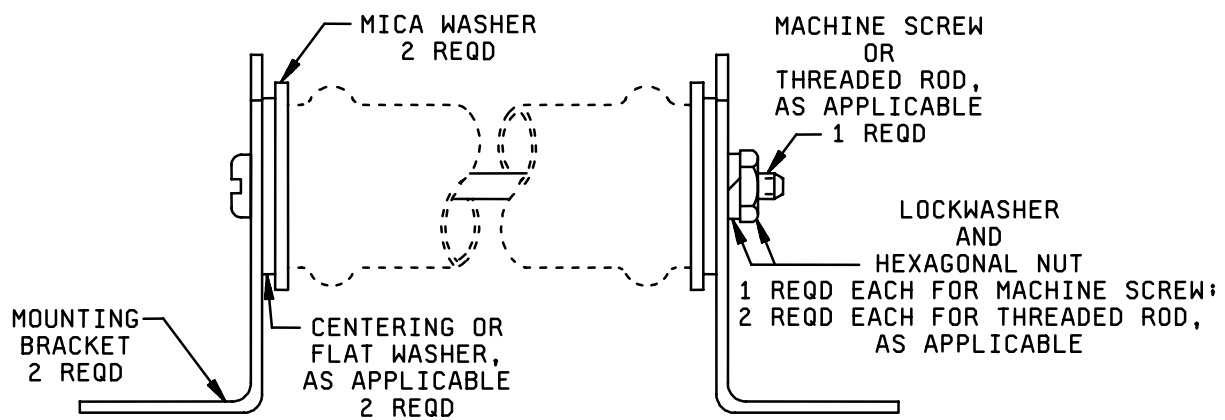
6 August 2001

DETAIL SPECIFICATION SHEET

BRACKET ASSEMBLY, RESISTOR (POWER TYPE)

This specification is approved for use by all Departments
and Agencies of the Department of Defense.

The requirements for acquiring the product described herein shall consist of
this specification sheet and the latest issues of [MIL-PRF-26](#), and [MIL-R-19365](#).

FIGURE 1. Bracket assembly.

MS75009J

Assembly dash no. 1/	Resistor style		Dash number or MS part or identifying number (PIN)						
	Spec MIL-PRF-26	Spec MIL-R-19365	Mica washer	Centering washer	Flat washer		Mounting bracket	Panhead machine screw 2/	
					Specification No.	Dash No.		Specification No.	Dash No.
-29	RW29	RX29	-1		MS27183	-7	-7	NASM35206	-255
-30	RW30		-2		MS27183	-7	-7	NASM35206	-252
-31	RW31		-2		MS27183	-7	-7	NASM35206	-254
-32	RW32	RX32	-2		MS27183	-7	-7	NASM35206	-256
-33	RW33	RX33	-2		MS27183	-7	-7	MS75009	-18
-34	RW34		-3	-5			-8	MS75009	-18
-35	RW35	RX35	-3	-5			-8	MS75009	-19
-36	RW36	RX36	-4	-6			-9	MS75009	-19
-37	RW37	RX37	-4	-6			-9	MS75009	-20
-38	RW38	RX38	-4	-6			-9	MS75009	-21
-39	RW39		-4	-6			-9	MS75009	-23
-47	RW47	RX47	-4	-6			-9	MS75009	-22

Assembly dash no. 1/	Resistor style		Dash number or MS part or identifying number (PIN)						
	Spec MIL-PRF-26	Spec MIL-R-19365	Threaded rod 2/		Hexagonal nut		Lockwasher 3/		Phosphor bronze
			Specification No.	Dash No.	Specification No.	Dash No.	Corrosion resisting steel	Dash No.	
-29	RW29	RX29			NASM35649	-282	NASM35338	-80	-16
-30	RW30				NASM35649	-282	NASM35338	-80	-16
-31	RW31				NASM35649	-282	NASM35338	-80	-16
-32	RW32	RX32			NASM35649	-282	NASM35338	-80	-16
-33	RW33	RX33	MS75009	-10	NASM35649	-282	NASM35338	-80	-16
-34	RW34		MS75009	-10	NASM35649	-282	NASM35338	-81	-17
-35	RW35	RX35	MS75009	-11	NASM35650	-302	NASM35338	-81	-17
-36	RW36	RX36	MS75009	-11	NASM35650	-302	NASM35338	-81	-17
-37	RW37	RX37	MS75009	-12	NASM35650	-302	NASM35338	-81	-17
-38	RW38	RX38	MS75009	-13	NASM35650	-302	NASM35338	-81	-17
-39	RW39		MS75009	-15	NASM35650	-302	NASM35338	-81	-17
-47	RW47	RX47	MS75009	-14	NASM35650	-302	NASM35338	-81	-17

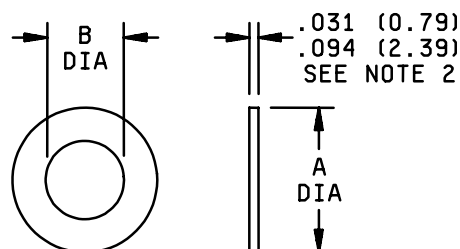
- 1/ The dash number added to the military-specification number constitutes the MS PIN of the assembly. the dash number is derived from the style number of the resistor; for example, MS75009-29 is derived from RW29 and RX29.
- 2/ Use of either pan head machine screw or threaded rod optional, where applicable.
- 3/ Use of either corrosion-resisting-steel or phosphor-bronze lockwasher (s) is optional.

NOTES:

1. Referenced documents shall be of the issue in effect on date of invitations for bid.
2. For design feature purposes, this specification sheet takes precedence over acquisition documents referenced herein.

FIGURE 1. Bracket assembly - Continued.

MS75009J



Inches	mm	Inches	mm
.015	0.38	.500	12.70
.031	0.79	.688	17.48
.094	2.39	.750	19.05
.195	4.95	1.000	25.40
.469	11.91	1.375	34.93

Dash No. <u>1</u> /	Mica washer dim.	
	A +.015 -.000	B +.015 -.000
-1	.469	.195
-2	.750	.195
-3	1.000	.500
-4	1.375	.688

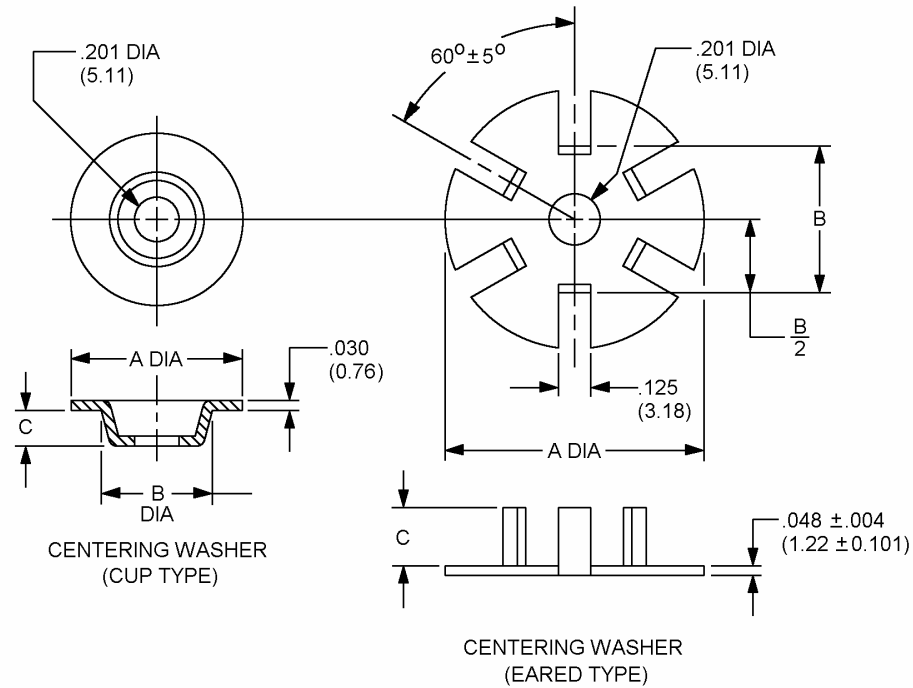
1/ The dash number added to the military-specification number constitutes the MS PIN; for example: MS75009-1.

NOTES

1. Dimensions are in inches.
2. The washer may consist of several sheets to obtain minimum thickness.
3. Metric equivalents are given for general information only.
4. Referenced documents shall be of the issue in effect on date of invitations for bid.
5. For design feature purposes, this specification sheet takes precedence over acquisition documents referenced herein.

FIGURE 2. Mica washer.

MS75009J



Inches	mm	Inches	mm
.005	0.13	.250	6.35
.031	0.79	.463	11.76
.045	1.14	.684	17.37
.125	3.18	.750	19.06
.156	3.96	1.125	25.58

Dash no. 1/	Type	Centering washer dim.		
		A	B	C
-5	Cup	.750	.463 +.005 -.000	.156
-6	Eared	1.125	.684	.250

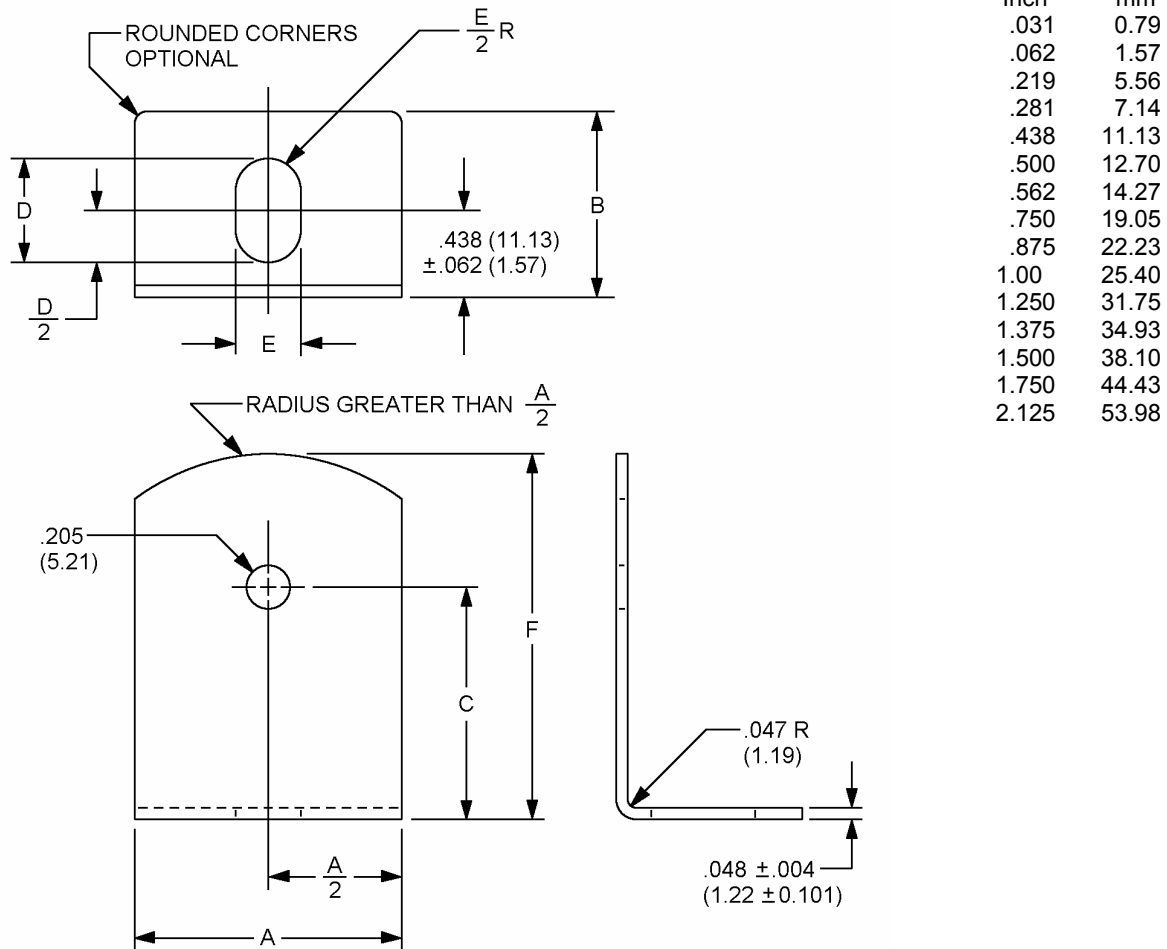
1/ The dash number added to the MS military specification number constitutes the MS part number; for example: MS75009-1.

NOTE:

1. Dimensions are in inches.
2. Metric equivalents are given for general information only.
3. Unless otherwise specified, tolerance is ± 0.005 (0.13 mm) on decimals.
4. Centering washer shall be steel conforming to [QQ-S-698](#), [ASTM A109](#), [ASTM A366](#), or [AMS5040](#), respectively.
5. Referenced documents shall be of the issue in effect on date of invitations for bid.
6. For design feature purposes, this specification sheet takes precedence over acquisition documents referenced herein.

FIGURE 3. Centering washer.

MS75009J



Dash no. 1/	Mounting bracket dimensions					
	A ±.062	B ±.062	C ±.062	D ±.062	E ±.031	F ±.062
-7	.500	.750	1.00	.438	.219	1.375
-8	.750	.750	1.250	.438	.219	1.750
-9	1.250	.875	1.500	.562	.281	2.125

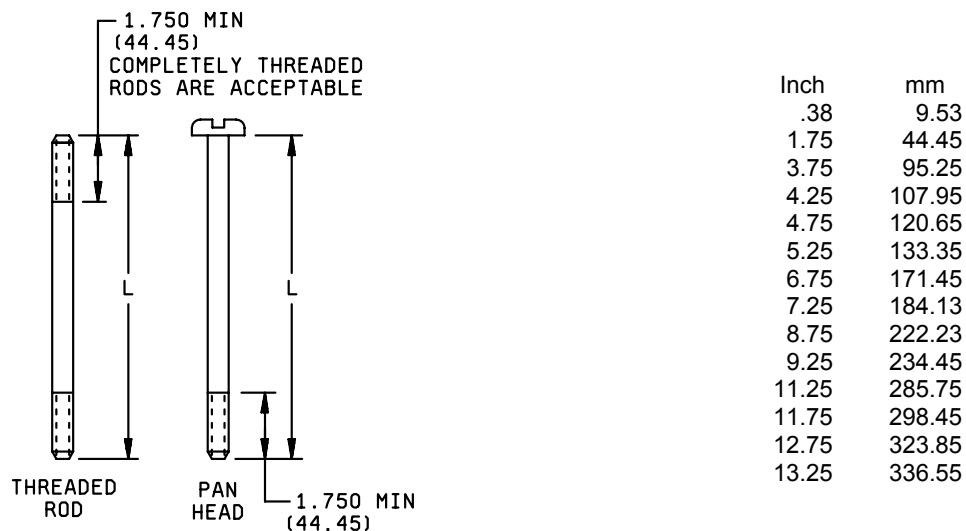
1/ The dash number added to the military-specification number constitutes the MS PIN; for example: MS75009-1.

NOTES

1. Dimensions are in inches.
2. Metric equivalents are given for general information only.
3. Unless otherwise specified, tolerance is ± 0.005 (0.13 mm) on decimals.
4. Mounting bracket shall be steel conforming to [QQ-S-698](#), [ASTM A109](#), [ASTM A366](#), or [AMS5040](#), respectively.
5. Referenced documents shall be of the issue in effect on date of invitations for bid.
6. For design feature purposes, this specification sheet takes precedence over acquisition documents referenced herein.

FIGURE 4. Mounting bracket.

MS75009J



Pan head machine screw dash no. <u>1/</u>	Threaded rod dash no. <u>1/</u>	Dimensions		
		L <u>2/</u> (approx)		Screw thread
		Screw	Rod	
-18	-10	3.750	4.250	.164-32 UNC-2A (number 8)
-19	-11	4.760	5.250	
-20	-12	6.750	7.250	
-21	-13	8.750	9.250	.190-32 UNF-2A (number 10)
-22	-14	11.250	11.750	
-23	-15	12.750	13.250	

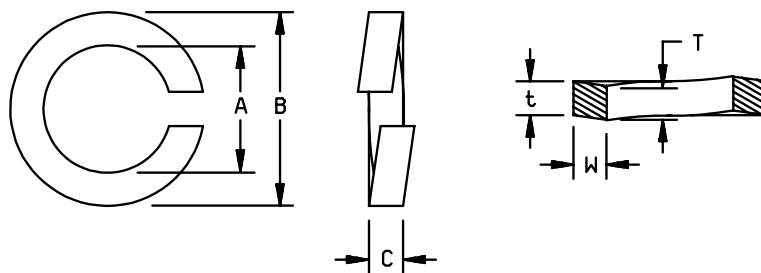
- 1/ The dash number added to the military-specification number constitutes the MS PIN; for example: MS75009-1.
- 2/ When assembled, not less than 1.5 threads nor more than 0.38 inch of thread shall extend beyond each nut.

NOTES:

1. Dimensions are in inches.
2. Metric equivalents are given for general information only.
3. Unless otherwise specified, tolerance is ± 0.005 (0.13 mm) on decimals.
4. Pan head machine screws not covered by [NASM35206](#) and threaded rods shall be carbon-steel wire or carbon steel conforming to [ASTM A108](#), [A575](#), [A576](#), [A663](#), or [A675](#), respectively.
5. Threaded parts shall be in accordance with [FED-STD-H28](#).
6. Referenced documents shall be of the issue in effect on date of invitations for bid.
7. For design feature purposes, this specification sheet takes precedence over acquisition documents referenced herein.

FIGURE 5. Rods.

MS75009J



PHOSPHOR-BRONZE LOCKWASHER

Inch	mm
.040	1.02
.046	1.17
.047	1.19
.055	1.40
.062	1.57
.164	4.17
.168	4.27
.178	4.52
.190	4.83
.194	4.93
.205	5.21
.296	7.52
.337	8.56

Dash No. <u>1</u> /	Nominal size	Phosphor-bronze-lockwasher dimensions					
		A		B	$C = \frac{T+t}{2}$		W
		Max	Min	Max	Max	Min	Min
-16	No. 8 .164	.178	.168	.296	.046	.040	.055
-17	No. 10 .190	.205	.194	.337	.053	.047	.062

1/ The dash number added to the military-specification number constitutes the MS PIN; for example: MS75009-1.

NOTES:

1. Dimensions are in inches.
2. Metric equivalents are given for general information only.
3. Unless otherwise specified, tolerance is ± 0.005 (0.13 mm) on decimals.
4. Referenced documents shall be of the issue in effect on date of invitations for bid.
5. For design feature purposes, this specification sheet takes precedence over acquisition documents referenced herein.

FIGURE 6. Lockwasher.

MS75009J

Changes from previous issue. Marginal notations are not used in this revision to identify changes with respect to the previous issue due to the extent of changes.

Reference documents. This document references the following:

MIL-PRF-26	AMS 5040
MIL-R-19365	ASTM A108
MS27183	ASTM A109
QQ-S-698	ASTM A366
FED-STD-H28	ASTM A575
	ASTM A576
NASM 35206	ASTM A663
NASM 35338	ASTM A675
NASM 35649	
NASM 35650	

Custodians:
Army - CR
Navy - EC
Air Force - 11

Preparing activity:
DLA - CC

(Project 5905-2011)

Review activities:
Army - AR
Navy - AS, MC, OS

NOTE: The activities listed above were interested in this document as of the date of this document, since organization and responsibilities can change; you should verify the currency of the information above using the ASSIST Online database at <http://assist.daps.dla.mil>.