

INCH-POUND

MS75009H

6 August 2001

SUPERSEDING

MS75009G

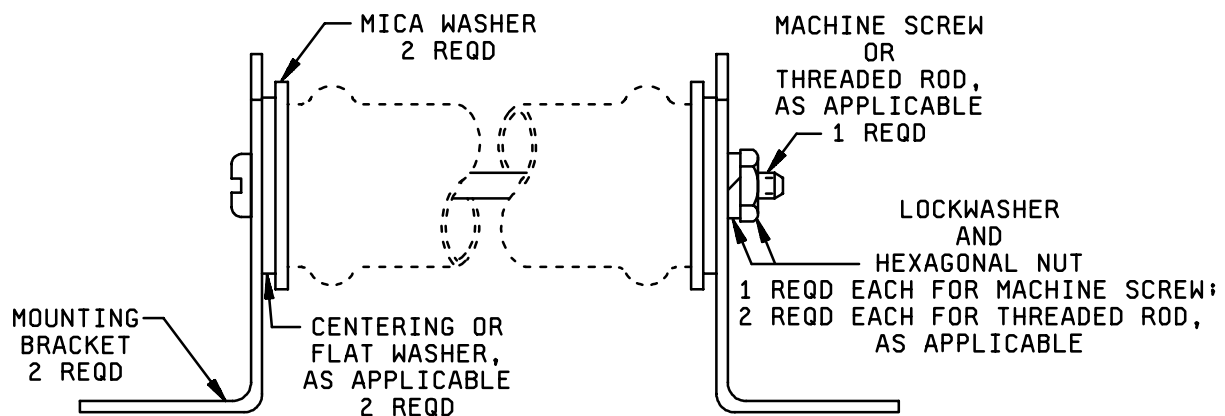
12 June 1990

DETAIL SPECIFICATION SHEET

BRACKET ASSEMBLY, RESISTOR (POWER TYPE)

This specification is approved for use by all Departments and Agencies of the Department of Defense.

The requirements for acquiring the product described herein shall consist of this specification sheet MIL-PRF-26.

BRACKET ASSEMBLY

MS75009H

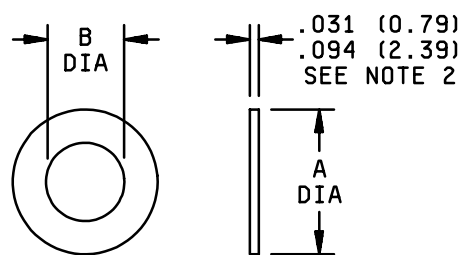
Assem- bly dash no. 1/	Resistor style		Dash number or MS part or identifying number (PIN)									
	Spec MIL- PRF-26	Spec MIL-R- 19365	Mica washer	Center- ing washer	Flat washer	Mount- ing bracket	Panhead machine screw 2/	Threaded rod 2/	Hexagonal nut	Corrosion resisting steel	Phosphor bronze	
-29	RW29	RX29	-1	---	MS27183-7	-7	NASM35206-255		MS35649-82	MS35338-80	-16	
-30	RW30	---	-2	---	MS27183-7	-7	NASM35206-252		MS35649-82	MS35338-80	-16	
-31	RW31	---	-2	---	MS27183-7	-7	NASM35206-254		MS35649-82	MS35338-80	-16	
-32	RW32	RX32	-2	---	MS27183-7	-7	NASM35206-256		MS35649-82	MS35338-80	-16	
-33	RW33	RX33	-2	---	MS27183-7	-7	MS75009-18	MS75009-10	MS35649-82	MS35338-80	-16	
-34	RW34	---	-3	-5	---	-8	MS75009-18	MS75009-10	MS35649-82	MS35338-81	-17	
-35	RW35	RX35	-3	-5	---	-8	MS75009-19	MS75009-11	MS35650-102	MS35338-81	-17	
-36	RW36	RX36	-4	-6	---	-9	MS75009-19	MS75009-11	MS35650-102	MS35338-81	-17	
-37	RW37	RX37	-4	-6	---	-9	MS75009-20	MS75009-12	MS35650-102	MS35338-81	-17	
-38	RW38	RX38	-4	-6	---	-9	MS75009-21	MS75009-13	MS35650-102	MS35338-81	-17	
-39	RW39	---	-4	-6	---	-9	MS75009-23	MS75009-15	MS35650-102	MS35338-81	-17	
-47	RW47	RX47	-4	-6	---	-9	MS75009-22	MS75009-14	MS35650-102	MS35338-81	-17	

1/ The dash number added to the MS military-standard number constitutes the MS PIN of the assembly. The dash number is derived from the style number of the resistor; for example, MS75009-29 is derived from RW29 and RX29.

2/ Use of either pan head machine screw or threaded rod optional, where applicable.

3/ Use of either corrosion-resisting-steel or phosphor-bronze lockwasher (s) is optional.

MS75009H



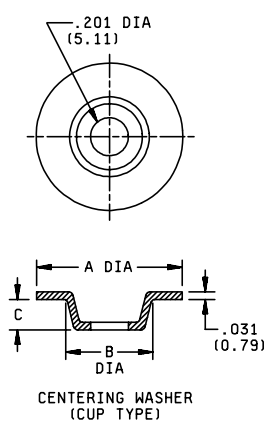
MICA WASHER

Inches	mm
0.015	0.38
0.031	0.79
0.094	2.39
0.195	4.95
0.469	11.91
0.500	12.70
0.688	17.48
0.750	19.05
1.00	25.40
1.375	34.93

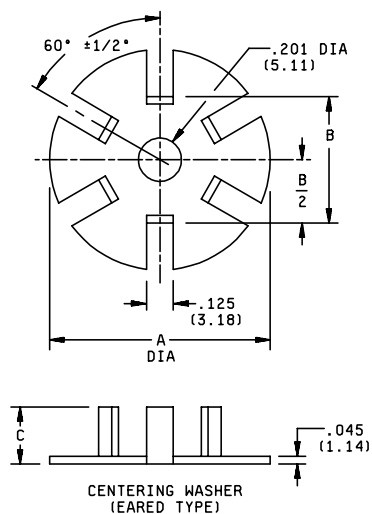
Dash No. <u>1</u> /	Mica washer dim.	
	A +.015 -.000	B +.015 -.000
-1	0.469	0.195
-2	0.750	0.195
-3	1.000	0.500
-4	1.375	0.688

1/ The dash number added to the MS military-standard number constitutes the MS PIN; for example: MS75009-1

2/ The washer may consist of several sheets to obtain minimum thickness.



CENTERING WASHER (CUP TYPE)



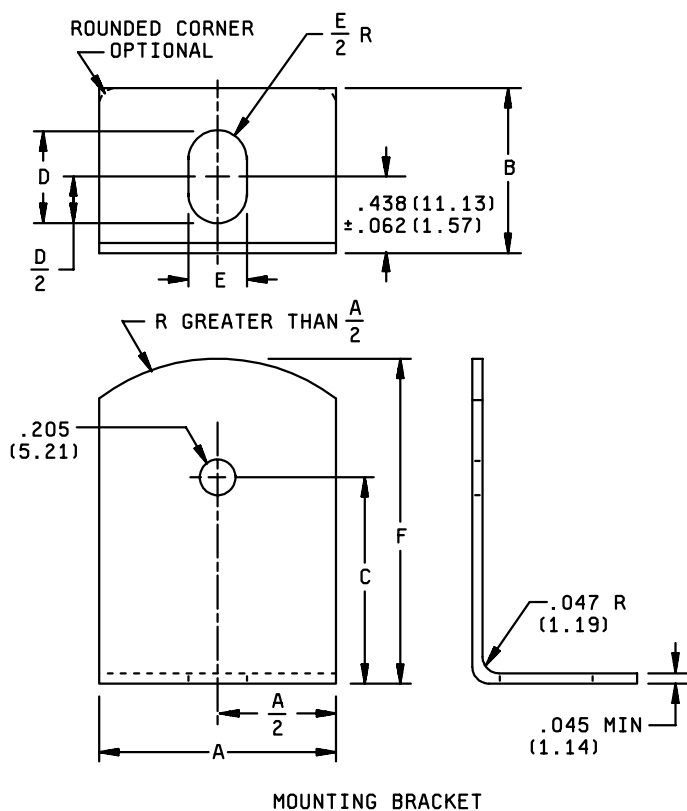
CENTERING WASHER (EARED TYPE)

Inch	mm
0.005	0.13
0.031	0.79
0.045	1.14
0.125	3.18
0.156	3.96
0.250	6.35
0.463	11.76
0.684	17.37
0.750	19.06
1.125	28.58

Dash no. <u>1</u> /	Type	Centering washer dim.		
		A	B	C
-5	Cup	0.750	0.463 +.005 -.000	0.156
-6	Eared	1.125	0.684	0.250

1/ The dash number added to the MS military standard number constitutes the MS part number; for example: MS75009-1.

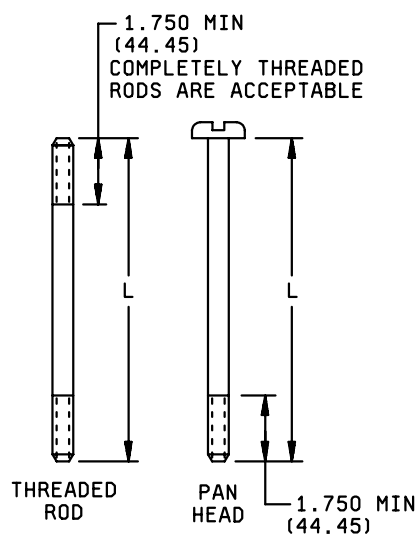
MS75009H



Dash no. 1/	Mounting bracket dimensions					
	A $\pm .062$	B $\pm .062$	C $\pm .062$	D $\pm .062$	E $\pm .031$	F $\pm .062$
-7	0.500	0.750	1.00	0.438	0.219	1.375
-8	0.750	0.750	1.250	0.438	0.219	1.750
-9	1.250	0.875	1.500	0.562	0.281	2.125

1/ The dash number added to the MS military-standard number constitutes the MS PIN; for example: MS75009-1.

MS75009H



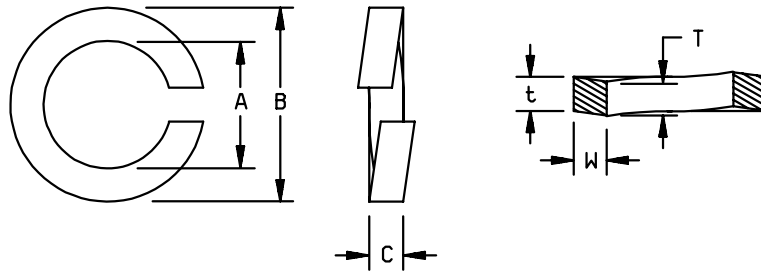
Inch	mm
0.38	9.53
1.75	44.45
3.75	95.25
4.25	107.95
4.75	120.65
5.25	133.35
6.75	171.45
7.25	184.13
8.75	222.23
9.25	234.45
11.25	285.75
11.75	298.45
12.75	323.85
13.25	336.55

Pan head machine screw dash no. <u>1</u> /	Threaded rod dash no. <u>1</u> /	Dimensions		
		L <u>2</u> / (approx)		Screw thread
		Screw	Rod	
-18	-10	3.750	4.250	.164-32 UNC-2A (number 8)
-19	-11	4.760	5.250	
-20	-12	6.750	7.250	
-21	-13	8.750	9.250	.190-32 UNF-2A (number 10)
-22	-14	1.250	11.750	
-23	-15	12.750	13.250	

1/ The dash number added to the MS military-standard number constitutes the MS PIN; for example: MS75009-1.

2/ When assembled, not less than 1½ threads nor more than 0.38 inch of thread shall extend beyond each nut.

MS75009H



PHOSPHOR-BRONZE LOCKWASHER

Inch	mm
0.040	1.02
0.046	1.17
0.047	1.19
0.055	1.40
0.062	1.57
0.164	4.17
0.168	4.27
0.178	4.52
0.190	4.83
0.194	4.93
0.205	5.21
0.296	7.52
0.337	8.56

Dash No. 1/	Nominal size	Phosphor-bronze-lockwasher dimensions					
		A		B	$C = \frac{T+t}{2}$		W
		Max	Min	Max	Max	Min	Min
-16	No. 8 0.164	0.178	0.168	0.296	0.046	0.040	0.055
-17	No. 10 0.190	0.205	0.194	0.337	0.053	0.047	0.062

1/ The dash number added to the MS military-standard number constitutes the MS PIN; for example: MS75009-1.

NOTES:

1. Dimensions are in inches.
2. Metric equivalents are given for general information only.
3. Unless otherwise specified, tolerance is ± 0.005 (0.13 mm) on decimals.
4. Pan head machine screws not covered by NASM35206 and threaded rods shall be carbon-steel wire or carbon steel conforming to ASTM A108, A575, A576, A663, or A675, respectively.
5. Threaded parts shall be in accordance with FED-STD-H28.
6. Referenced documents shall be of the issue in effect on date of invitations for bid.
7. For design feature purposes, this standard takes precedence over acquisition documents referenced herein.

Custodians:

Army - CR
Navy - EC
Air Force - 11

Preparing activity:

DLA - CC

Review activities:

Army - AR
Navy - AS, MC, OS

(Project 5905-1628)

STANDARDIZATION DOCUMENT IMPROVEMENT PROPOSAL

INSTRUCTIONS

1. The preparing activity must complete blocks 1, 2, 3, and 8. In block 1, both the document number and revision letter should be given.
2. The submitter of this form must complete blocks 4, 5, 6, and 7, and send to preparing activity.
3. The preparing activity must provide a reply within 30 days from receipt of the form.

NOTE: This form may not be used to request copies of documents, nor to request waivers, or clarification of requirements on current contracts. Comments submitted on this form do not constitute or imply authorization to waive any portion of the referenced document(s) or to amend contractual requirements.

I RECOMMEND A CHANGE:	1. DOCUMENT NUMBER MS75009H	2. DOCUMENT DATE (YYMMDD) 2001 August 6
3. DOCUMENT TITLE BRACKET ASSEMBLY, RESISTOR (POWER TYPE)		
4. NATURE OF CHANGE (Identify paragraph number and include proposed rewrite, if possible. Attach extra sheets as needed.)		
5. REASON FOR RECOMMENDATION		
6. SUBMITTER		
a. NAME (Last, First, Middle initial)	b. ORGANIZATION	
c. ADDRESS (Include Zip Code)	d. TELEPHONE (Incl Area Code) (1) Commercial (2) DSN (If applicable)	7. DATE SUBMITTED (YYYYMMDD)
8. PREPARING ACTIVITY		
a. NAME Defense Supply Center, Columbus ATTN: DSCC – VAT	b. TELEPHONE (Include Area Code) (1) Commercial (2) DSN (614) 692-0553 850-0553	
c. ADDRESS (Include Zip Code) P.O. 3990 Columbus, OH 43216-5000	IF YOU DO NOT RECEIVE A REPLY WITHIN 45 DAYS, CONTACT: Defense Standardization Program Office (DLSC-LM) 8725 John J. Kingman Road, Suite 2533 Fort Belvoir, Virginia 22060-6221 Telephone (703) 767-6888 DSN 427-6888	