

Review activities :
 Army - AV, SH
 Navy - MC, SF
 DLA - CS

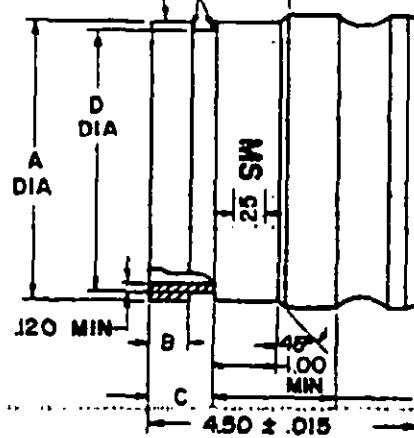
DISTRIBUTION STATEMENT A. Approved for public release; distribution is unlimited.
 This military standard is approved for use by all Departments and Agencies of the Department of Defense. Selection for all new engineering and design applications and for repetitive use shall be made from this document, when applicable.

(THIS END IS SUITED FOR
 MATING WITH CLAMPS
 CONFORMING TO MIL-C-10387)

GROOVE FILLET
 RADIUS .020 ± .010

FED. SUP CLASS
 4730

THIS PORTION CONFORMS
 TO MS27019



LOCATION OF "MS"
 SHALL BE WITHIN
 THIS AREA

DASH NO.	CLASS NUMBER		NOM SIZE	DIMENSIONS			
	CLASS 1	CLASS 2		A	B	C	D
-1	X		4	4.500 $\begin{smallmatrix} +.031 \\ -.016 \end{smallmatrix}$	0.625 ± .031	1.000 ± .031	4.334 $\begin{smallmatrix} +0.000 \\ -0.020 \end{smallmatrix}$
-2		X					
-3	X		6	6.625 $\begin{smallmatrix} +.031 \\ -.016 \end{smallmatrix}$	0.625 ± .031	1.000 ± .031	6.455 $\begin{smallmatrix} +0.000 \\ -0.022 \end{smallmatrix}$
-4		X					

(D) DENOTES CHANGES

P.A. ARMY-ME Other Cust NAVY-YD A.F-99	INTERNATIONAL INTEREST STANAG NO. 2761 QSTAG 240	TITLE COUPLING HALF, QUICK DISCONNECT, CAM-LOCKING TYPE, NIPPLE ADAPTER, MALE BY EXTERNAL GROOVED PIPE, TYPE XIX	MILITARY STANDARD MS 70100
PROCUREMENT SPECIFICATIONS MIL-C-27487		SUPERSEDES:	SHEET 1 OF 2

DD FORM 1 SEP 57 672

PREVIOUS EDITIONS OF THIS FORM ARE OBSOLETE

4730-0695

APPROVED 23 NOVEMBER 1965 REVISED (A) 12 FEBRUARY 1970 (B) 19 AUGUST 1975 (C) 16 JULY 1980 (D) 15 MAY 1989

FED. SUP. CLASS
4730

NOTES:

1. MATERIAL
 - A. BODY
 - CLASS 1 ALUMINUM - QQ-A-401, ALLOY 356, TEMPER T6, OR ALLOY 406, TEMPER T5.
 - CLASS 2 BRASS - QQ-C-390, ALLOY 836, 844 OR 922, OR BRASS, QQ-B-626, COPPER ALLOY 377.
2. FINISH
 - A. BODY
 - CLASS 1 ALUMINUM - MIL-A-8625, ANODIC COATING, TYPE II, CLASS 1, THICKNESS NOT LESS THAN 0.0004 IN.
 - CLASS 2 BRONZE OR BRASS - PLAIN
3. BURRS AND ALL FOREIGN MATERIAL SHALL BE REMOVED.
4. HYDROSTATIC TEST PRESSURE - 4 INCH, 300 P.S.I.; 6 INCH, 150 P.S.I.
5. WORKING PRESSURE - 4 INCH, 150 P.S.I.; 6 INCH, 75 P.S.I.
- ⑥ 6. DIMENSIONS - IN INCHES UNLESS OTHERWISE SPECIFIED, TOLERANCE $\pm .02$, $\pm 1/2^\circ$
7. PART NUMBER - THE MS PART NUMBER CONSISTS OF THE MS SHEET NUMBER PLUS THE DASH NUMBER.
EXAMPLE: MS70100-1
- ⑥ 8. REFERENCED GOVERNMENT DOCUMENTS OF THE ISSUE LISTED IN THAT ISSUE OF THE DEPARTMENT OF DEFENSE INDEX OF SPECIFICATION AND STANDARDS (DODISS) SPECIFIED IN THE SOLICITATION FORM A PART OF THIS STANDARD TO THE EXTENT SPECIFIED HEREIN.
9. FOR DESIGN FEATURE PURPOSES, THIS STANDARD TAKES PRECEDENCE OVER ACQUISITION DOCUMENTS REFERENCED HEREIN.
- ⑥ 10. IN THE EVENT OF A CONFLICT BETWEEN THE TEXT OF THIS STANDARD AND THE REFERENCES CITED HEREIN, THE TEXT OF THIS STANDARD SHALL TAKE PRECEDENCE.

NOTE: CERTAIN PROVISIONS (DIMENSIONS) OF THIS DOCUMENT ARE THE SUBJECT OF INTERNATIONAL STANDARDIZATION AGREEMENT (STANAG NO. 2761 AND QSTAG 240). WHEN CHANGE NOTICE, REVISION, OR CANCELLATION OF THIS DOCUMENT IS PROPOSED WHICH WILL AFFECT OR VIOLATE THE INTERNATIONAL AGREEMENT CONCERNED, THE PREPARING ACTIVITY SHALL TAKE APPROPRIATE RECONCILIATION ACTION THROUGH INTERNATIONAL STANDARDIZATION CHANNELS, INCLUDING DEPARTMENTAL STANDARDIZATION OFFICES, IF REQUIRED.

APPROVED 23 NOVEMBER 1976 REVISED

P A ARMY-WE Other Cust 1000 - YD 1000 - 99	INTERNATIONAL INTEREST STANAG NO. 2761 QSTAG 240	TITLE COUPLING HALF, QUICK DISCONNECT, CAM-LOCKING TYPE, NIPPLE ADAPTER, MALE BY EXTERNAL GROOVED PIPE, TYPE III	MILITARY STANDARD MS 70100
Procurement Specifications MIL-C-27487		SUPERSEDES:	SHEET 2 OF 2