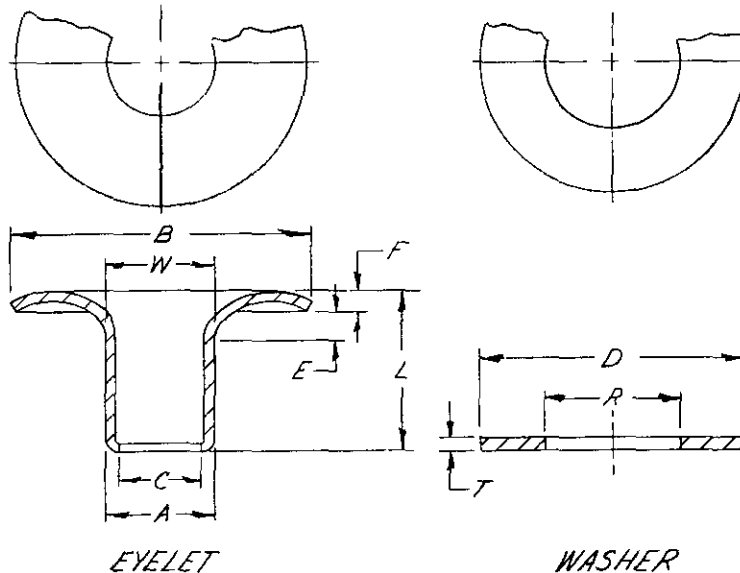


FED. SUP CLASS
5325

DASH NO.	A \pm .004	B \pm .007	C \pm .003	E	F \pm .005	W \pm .005	L \pm .005	WT LB/1000 MIN
-1-4212	.212	.550	.187	1/32	.033	.215	.33	1.540
-2-4213	.212	.550	.187	1/32	.033	.215	.27	1.356

DASH NO.	T \pm .004 -.002	D \pm .003	R \pm .002	
-3-4097	.031	.503	.250	FOR DASH NO. 1-4212 & 2-4213

NOTES

1. REFERENCED DOCUMENTS SHALL BE OF THE ISSUE IN EFFECT ON DATE OF INVITATION FOR BID OR REQUEST FOR PROPOSAL.
2. FOR DESIGN FEATURE PURPOSES, THIS STANDARD TAKES PRECEDENCE OVER DOCUMENTS REFERENCED HEREIN.
3. MATERIAL - BRASS.
4. FINISH - BLACK CHEMICAL.
5. ALL DIMENSIONS IN INCHES.
6. CONSTRUCTION DETAILS AND MATERIAL REQUIREMENTS NOT SPECIFIED HEREIN SHALL CONFORM TO THE PROCUREMENT SPECIFICATION.
7. WEIGHTS INCLUDE BLACK CHEMICAL FINISH.

Ⓒ CANCELLED 19 APRIL 1972
USE MIL-E-20652/1

Review
User
AT, ME, WC
MC
82
TS
Army
Navy
USAF
DSA

This military standard is mandatory for use by all Departments and Agencies of the Department of Defense. Selection for all new engineering and design applications and for repetitive use shall be made from this document.

P.A. ARMY-GL Other Cust USAF-82	TITLE <i>EYELETS, METALLIC, ROLLED SHALLOW FLANGE, WITH WASHER, STYLE B</i>	MILITARY STANDARD MS 6303 4
PROCUREMENT SPECIFICATION <i>MIL-E-20652</i>	SUPERSEDES: (IN PART) NLABS DWG. 4-1-153, REV. "C" DATED 1 MAY 1963	SHEET 1 OF 1