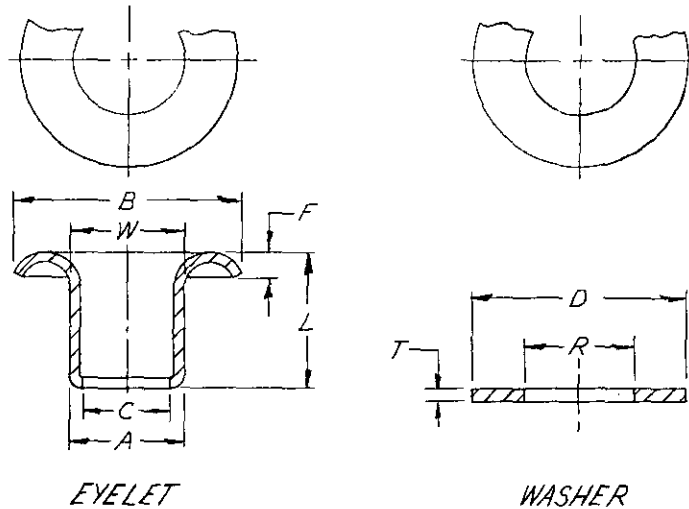


FED. SUP CLASS
5325

DASH NO.	A ^{±.004}	B ^{±.007}	C ^{±.003}	F ^{±.005}	W ^{±.005}	L ^{±.005}	WT LB/1000 MIN.
-1-4094	.200	.403	.177	.045	.205	.255	0.935
-2-4211	.200	.403	.177	.045	.205	.295	0.967
-3-1563	.200	.300	.177	.026	.205	.213	0.591
-4-4132	.158	.245	.137	.028	.163	.210	0.418
-5-4133	.158	.245	.137	.028	.163	.250	0.515
-7-4093	.200	.403	.177	.045	.205	.188	0.758

DASH NO.	T ^{±.004} ±.002	D ^{±.003}	R ^{±.002}
-6-4096	.020	.450	.220

FOR DASH NO. -7-4093, -1-4094, -2-4211

NOTES

1. REFERENCED DOCUMENTS SHALL BE OF THE ISSUE IN EFFECT ON DATE OF INVITATION FOR BID OR REQUEST FOR PROPOSAL.
2. FOR DESIGN FEATURE PURPOSES, THIS STANDARD TAKES PRECEDENCE OVER DOCUMENTS REFERENCED HEREIN.
3. MATERIAL - BRASS.
4. FINISH - BLACK CHEMICAL.
5. ALL DIMENSIONS IN INCHES.
6. CONSTRUCTION DETAILS AND MATERIAL REQUIREMENTS NOT SPECIFIED HEREIN SHALL CONFORM TO THE PROCUREMENT SPECIFICATION.
7. WEIGHTS INCLUDE BLACK CHEMICAL FINISH.

P.A. ARMY-GL
Other Cust
USAF-82

TITLE

EYELETS, METALLIC, ROLLED DEEP
FLANGE, WITH WASHER, STYLE A

MILITARY STANDARD

MS 63033

PROCUREMENT SPECIFICATION
MIL-E-20652SUPERSEDES: (IN PART) NLABS DWG 4-1-153,
REV "C," DATED 1 MAY 1963

SHEET 1 OF 1

DD FORM 672-1 (Coordinated)

PREVIOUS EDITIONS OF THIS FORM ARE OBSOLETE.

Review
ML, MO
82
18Army
Navy
USAF
DSA

This military standard is mandatory for use by all Departments and Agencies of the Department of Defense. Selection for all new engineering and design applications and for repetitive use shall be made from this document.

C CANCELLED 19 APRIL 1972
USE MIL-E-20652/1

APPROVED 23 DEC 58 REVISED (A) 19 APRIL 65 (B) 12 MAR 1969 (C) 19 APRIL 1972