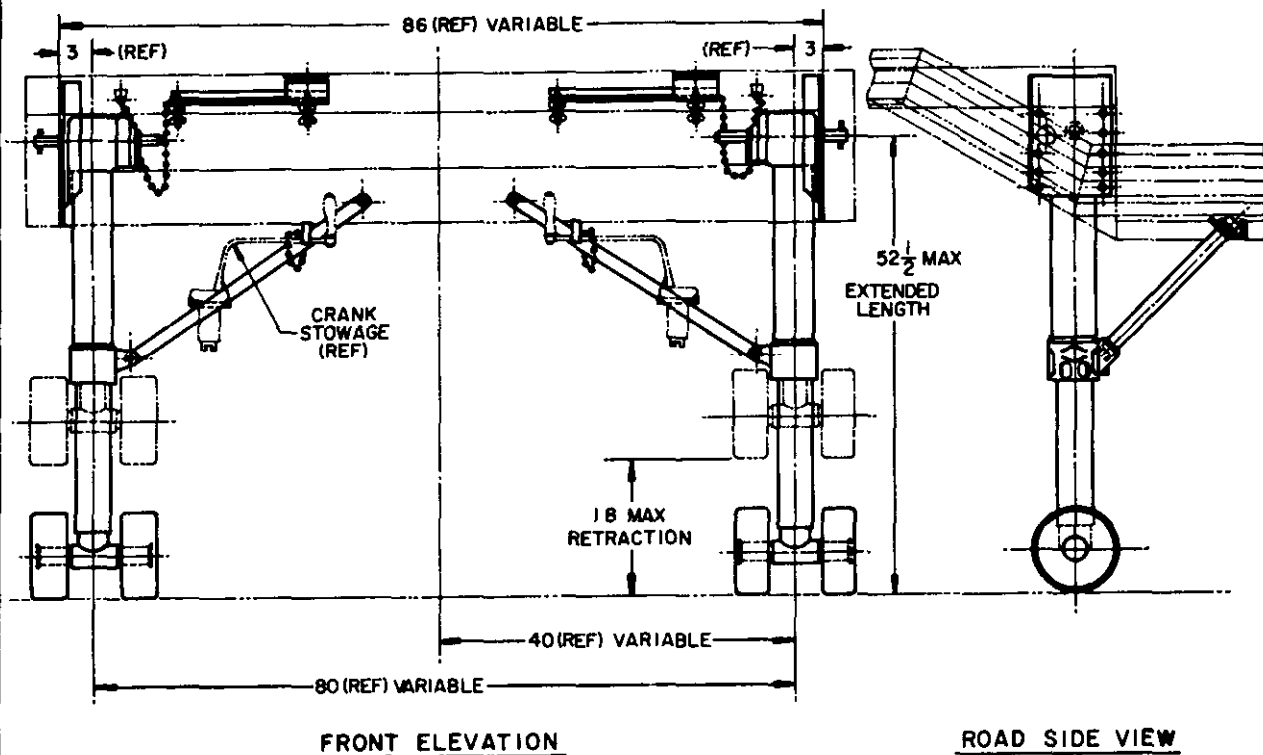


USER ACTIVITIES: ARMY-EL  
REVIEW ACTIVITY:TYPICAL INSTALLATION SHOWN AS USED ON  
SEMITRAILER, VAN, 3 TON, 2-WHEEL, M 348A2

## NOTES:

1. TWO SPEED GEAR BOX WITH DETACHABLE RATCHET CRANK DRIVE.
2. ACME SCREW OPERATED LANDING LEGS—INDIVIDUALLY ACTUATED.
3. THE EXTENDED LENGTH AND RETRACTION DIMENSIONS ARE MAXIMUM. NO ALLOWANCE IS INCLUDED FOR LEVELING VEHICLE.
4. THE TYPICAL INSTALLATION SHOWN IS FOR ENGINEERING REFERENCE ONLY. THIS ASSEMBLY MAY BE USED ON OTHER MODEL VEHICLES UTILIZING SIMILAR CONSTRUCTION CHARACTERISTICS.
5. REFERENCED DOCUMENTS SHALL BE OF THE ISSUE IN EFFECT ON DATE OF INVITATION FOR BIDS.
6. DIMENSIONS SHOWN ARE IN INCHES AND ARE FOR ENGINEERING REFERENCE ONLY.
7. FOR DESIGN FEATURE PURPOSES THIS STANDARD TAKES PRECEDENCE OVER PROCUREMENT DOCUMENTS REFERENCED HEREIN.
8. MARKING SHALL CONSIST OF THE MS PART NUMBER AND MANUFACTURERS IDENTIFICATION IN ACCORDANCE WITH MIL-STD-130.

DETAILS OF THIS ASSEMBLY SHOWN  
PARTS LIST

**(A) CANCELLED AFTER 27 AUGUST 1981.**  
**NO SUPERSEDING STANDARD.**

This standard has been approved by the  
Department of the Army and is mandatory for use by  
that activity. All other military activities are required  
to employ this standard where suitable.

P.A. MO (ATAC)	TITLE	MS PART NO	ENGINEERING PARTS LIST
Other Cust	LANDING GEAR, RETRACTABLE— SEMITRAILER, VAN, FRAMELESS, 60,000 LB. STATIC CAPACITY	MS 53094-1	10882214
PROCUREMENT SPECIFICATION NONE	SUPERSEDES:	MILITARY STANDARD <b>MS 53094 (MO)</b>	
		SHEET 1 OF 1	

DD FORM 672-1 (Limited coordination)

PREVIOUS EDITIONS OF THIS FORM ARE OBSOLETE.

2590-N/A