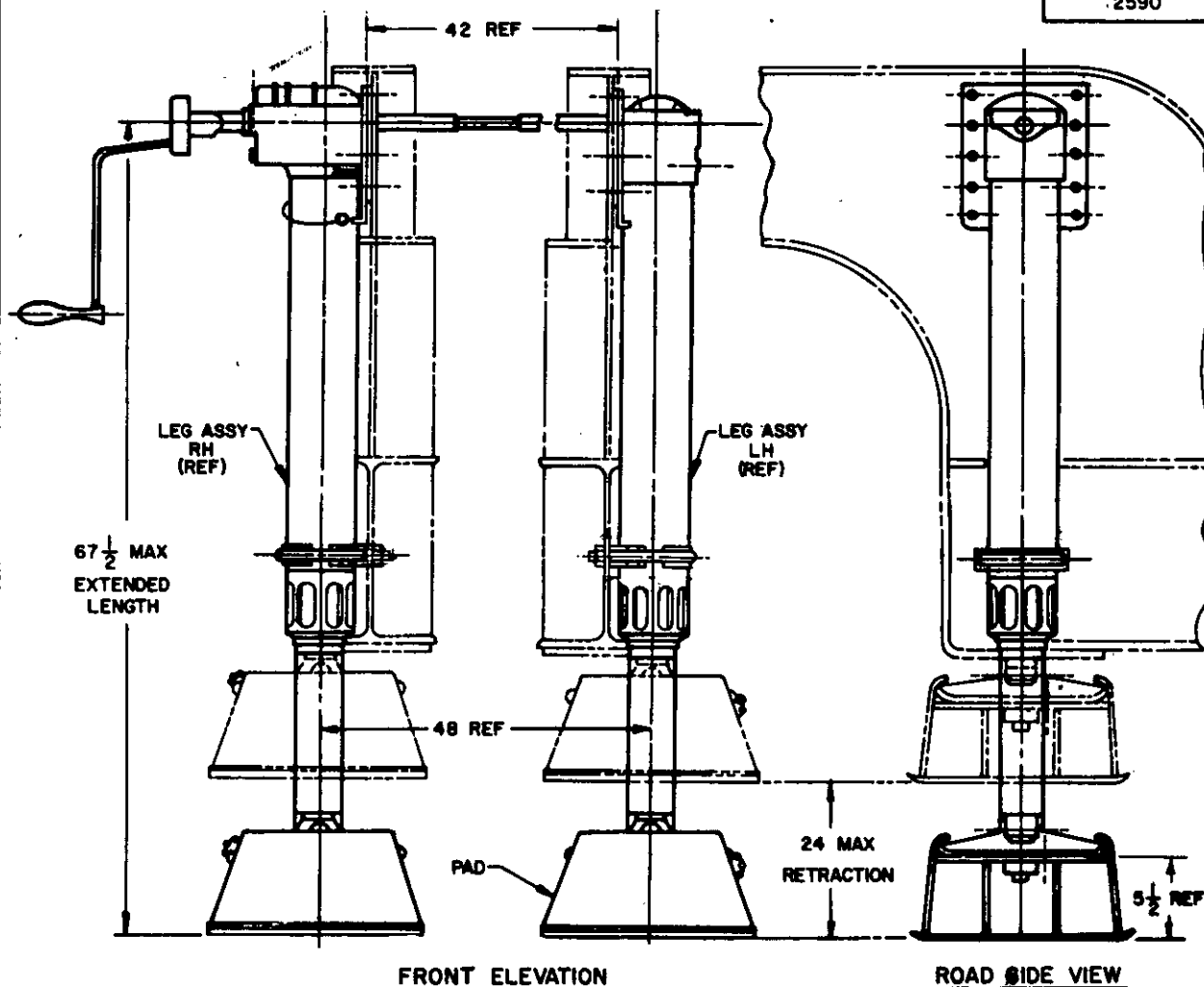


USER ACTIVITIES: ARMY-EL
REVIEW ACTIVITY:



TYPICAL INSTALLATION SHOWN AS USED ON
SEMITRAILER, LOW BED, 25 TON, 4 WHEEL, M172A1

NOTES:

1. TWO SPEED GEAR BOX WITH FOLDING CRANK RATCHET DRIVE.
2. ACME SCREW OPERATED LANDING LEGS.
3. THE EXTENDED LENGTH AND RETRACTION DIMENSIONS ARE MAXIMUM.. NO ALLOWANCE IS INCLUDED FOR LEVELING VEHICLE.
4. THE TYPICAL INSTALLATION SHOWN IS FOR ENGINEERING REFERENCE ONLY. THIS ASSEMBLY MAY BE USED ON OTHER MODEL VEHICLES UTILIZING SIMILAR CONSTRUCTION CHARACTERISTICS.
5. REFERENCED DOCUMENTS SHALL BE OF THE ISSUE IN EFFECT ON DATE OF INVITATION FOR BIDS.
6. DIMENSIONS SHOWN ARE IN INCHES AND ARE FOR ENGINEERING PURPOSES.
7. FOR DESIGN FEATURE PURPOSES, THIS ASSEMBLY IS IDENTICAL TO THE ASSEMBLY SHOWN IN THE REFERENCED DRAWING.
8. MATERIALS AND WORKMANSHIP SHALL BE IN ACCORDANCE WITH REFERENCED DRAWING.

(A) CANCELLED AFTER 27 AUGUST 1981.
NO SUPERSEDING STANDARD.

THIS ASSEMBLY IS IDENTICAL TO THE ASSEMBLY SHOWN IN THE REFERENCED DRAWING (SEE ENGINEERING PARTS LIST) AND MAY BE OBTAINED FROM U.S. ARMY TANK-AUTOMOTIVE CENTER, ATTENTION: STANDARDIZATION BRANCH, WARREN, MICHIGAN, 48090.

P.A. MO(ATAC)	TITLE	MS PART NO.	ENGINEERING PARTS LIST
Other Cust	LANDING GEAR, RETRACTABLE- SEMITRAILER, LOW BED, 60,000 LB. STATIC CAPACITY	MS 53093 -I	8336572
PROCUREMENT SPECIFICATION NONE	SUPERSEDES:	MILITARY STANDARD MS 53093 (MO)	
		SHEET	OF

This standard has been approved by the Department of the Army and is mandatory for use by that activity. All other military activities are required to employ this standard where suitable.