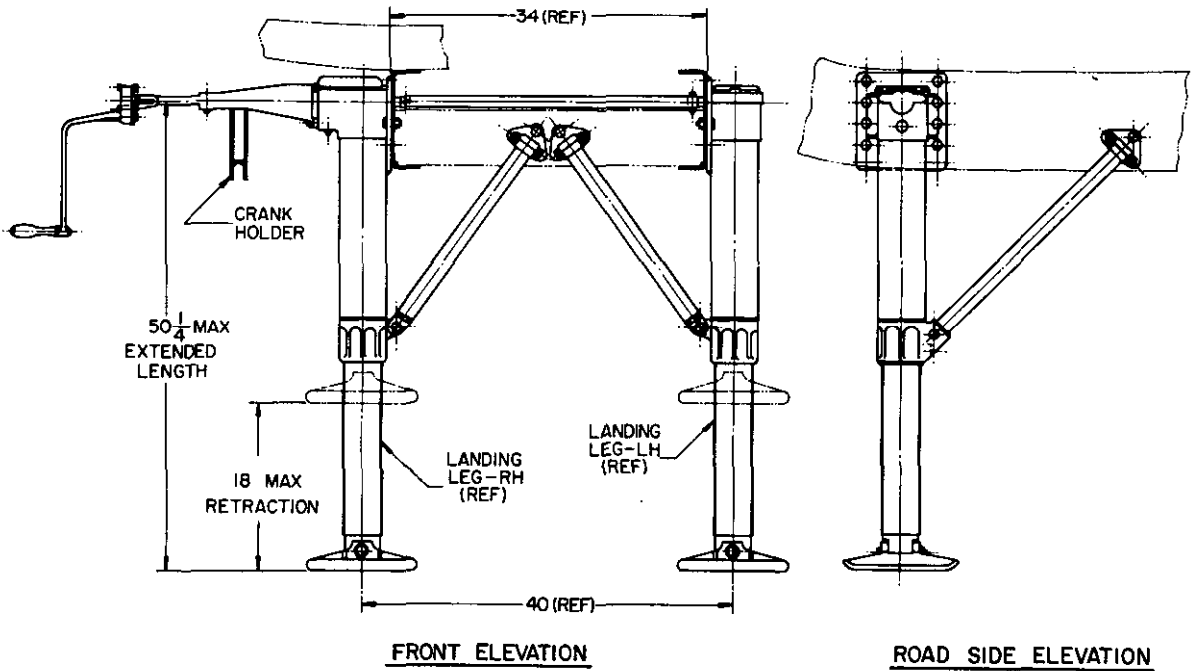


Ⓐ **CANCELLED**

AFTER 17 MARCH 1976

FOR NEW DESIGN & PROCUREMENT USE DWG 11625468



USER ACTIVITIES: ARMY - EL
REVIEW ACTIVITY:

TYPICAL INSTALLATION SHOWN AS USED ON
CHASSIS, SEMITRAILER, 6 TON, 2 WHEEL, M117A1

NOTES:

1. TWO SPEED GEAR BOX WITH FOLDING RATCHET CRANK DRIVE.
2. ACME SCREW OPERATED LANDING LEGS.
3. THE EXTENDED LENGTH AND RETRACTION DIMENSIONS ARE MAXIMUM. NO ALLOWANCE IS INCLUDED FOR LEVELING VEHICLE.
4. THE TYPICAL INSTALLATION SHOWN IS FOR ENGINEERING REFERENCE ONLY. THIS ASSEMBLY MAY BE USED ON OTHER MODEL VEHICLES UTILIZING SIMILAR CONSTRUCTION CHARACTERISTICS.
5. REFERENCED DOCUMENTS SHALL BE OF THE ISSUE IN EFFECT ON DATE OF INVITATION FOR BIDS.
6. DIMENSIONS SHOWN ARE IN INCHES AND ARE FOR ENGINEERING REFERENCE ONLY.
7. FOR DESIGN FEATURE PURPOSES, THIS STANDARD TAKES PRECEDENCE OVER PROCUREMENT DOCUMENTS REFERENCED HEREIN.
8. MARKING SHALL CONSIST OF THE MS PART NUMBER AND MANUFACTURERS IDENTIFICATION IN ACCORDANCE WITH MIL-STD-130.

DETAILS OF THIS ASSEMBLY SHALL BE IN ACCORDANCE WITH REFERENCED DRAWING (SEE ENGINEERING PARTS LIST) AND MAY BE OBTAINED FROM U.S. ARMY TANK-AUTOMOTIVE CENTER, ATTENTION: STANDARDIZATION BRANCH, WARREN, MICHIGAN, 48090.

This military standard is approved by the U. S. Army Tank-Automotive Command, Department of the Army, and shall be used by that activity. All other military activities are required to employ this standard where suitable.

APPROVED 15 APRIL 1965 REVISED Ⓐ 17 MARCH 1976

MS PART NO	ENGINEERING PARTS LIST
MS 53090-1	8365182

P.A. ARMY- AT Other Cust	TITLE LANDING GEAR, RETRACTABLE- SEMITRAILER, VERTICAL LEG, 60,000 LB. STATIC CAPACITY	MILITARY STANDARD
PROCUREMENT SPECIFICATION NONE	SUPERSEDES:	MS 53090 (MO)
		SHEET OF