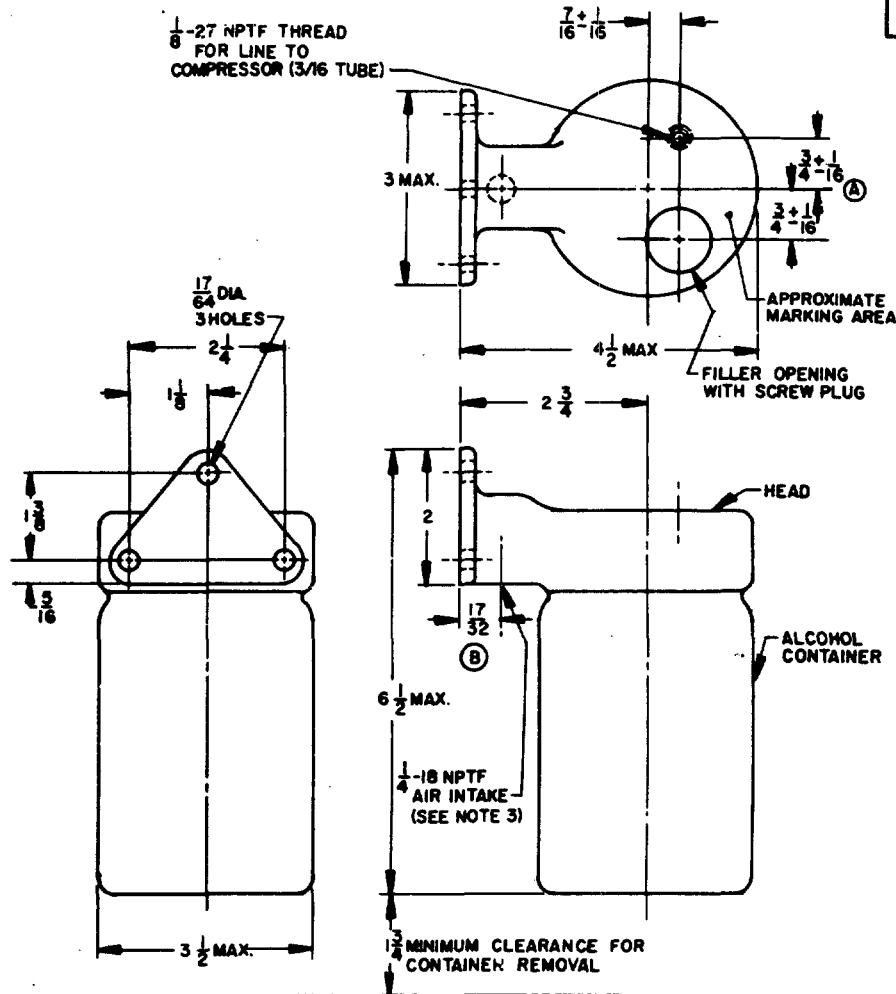


FED. SUP CLASS
2530

NOTES:

1. EVAPORATOR SHALL PROVIDE MEANS OF INDUCING FILTERED AIR THROUGH THE ALCOHOL TO FORM VAPOR FOR INDUCTION INTO THE AIR COMPRESSOR AND BRAKE SYSTEM.
2. EVAPORATOR SHALL METER INTO THE COMPRESSOR INTAKE A MINIMUM RATE OF 0.1cc OF ALCOHOL PER CFM OF FREE AIR DELIVERED BY THE COMPRESSOR, TO A MAXIMUM RATE OF 0.5cc OF ALCOHOL PER CFM.
3. AIR INTAKE IS PROVIDED FOR INSTALLATION OF ATTACHMENTS FOR DEEP WATER FORDING.
4. ASSEMBLY TO BE UNBREAKABLE IN NORMAL SERVICE AND TO BE OPERABLE IN AMBIENT TEMPERATURES OF FROM -35°F. TO +120°F.
5. MATERIALS TO BE COMPATIBLE WITH COMMERCIAL GRADE METHYL ALCOHOL (METHANOL)
6. CONTAINER SHALL BE MADE OF SHATTER RESISTANT MATERIAL, WITH A CAPACITY OF APPROXIMATELY ONE PINT, AND SHALL BE DETACHABLE BY MEANS OF GLASS JAR TYPE SCREW THREADS AS STANDARDIZED BY THE GLASS CONTAINERS MANUFACTURERS INSTITUTE, 1625 K ST. N.W., WASHINGTON, D.C. 20306.
7. OTHER THREADS SHALL BE IN ACCORDANCE WITH SCREW THREAD STANDARDS FOR FEDERAL SERVICES, H-28.
8. FOR DESIGN FEATURE PURPOSES, THIS STANDARD TAKES PRECEDENCE OVER PROCUREMENT DOCUMENTS REFERENCED HEREIN.
9. REFERENCED DOCUMENTS SHALL BE OF THE ISSUE IN EFFECT ON DATE OF INVITATIONS FOR BID.
10. UNLESS OTHERWISE SPECIFIED, DIMENSIONS ARE IN INCHES.
11. THIS STANDARD IS NOT INTENDED TO LIMIT CONSTRUCTION TO FEATURES OTHER THAN AS SHOWN HEREON BY DIMENSIONS, NOTATIONS OR REFERENCED DOCUMENTS.
12. MARKING SHALL CONSIST OF THE MS PART NUMBER AND MANUFACTURER'S IDENTIFICATION IN ACCORDANCE WITH MIL-STD-130.

MS PART NO. | FORMER PART NO.
MS 53067-1 | 8399169

MILITARY STANDARD

MS 53067(AT)

SHEET | OF |

APPROVED 25 OCTOBER 1963 REVISED (A) 24 APRIL 1967 (B) 6 MARCH 1970

This military standard is approved by the U. S. Army Tank-Automotive Command, Department of the Army, and is mandatory for use by that activity. All other military activities are required to employ this standard where suitable.

P.A. ARMY - AT Other Cust	TITLE
PROCUREMENT SPECIFICATION NONE	SUPERSEDES:

EVAPORATOR, ALCOHOL-
AIR BRAKE SYSTEM