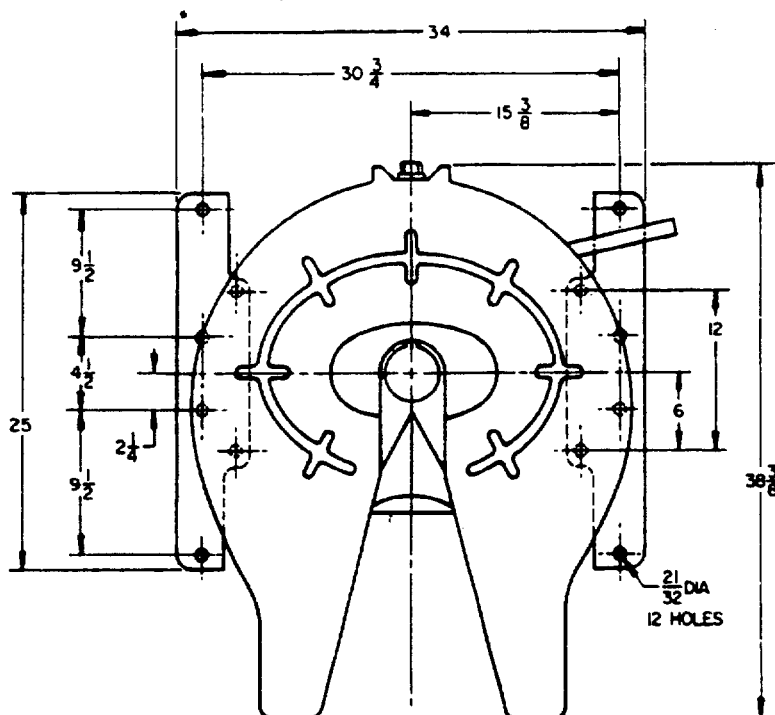
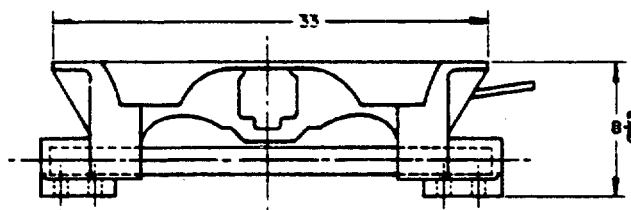


FED. SUP CLASS
2510

NOTE: *
ARTICULATION FORE & AFT:
FORE 20°
AFT 10°



NOTES:

1. FIFTH WHEEL ASSEMBLY REQUIRES USE OF KING PIN AS SHOWN ON MS 53036-1.
2. DIMENSIONS SHOWN ARE IN INCHES AND FOR ENGINEERING REFERENCE ONLY.
3. THREADS SHALL BE IN ACCORDANCE WITH SCREW THREAD STANDARDS FOR FEDERAL SERVICES, HANDBOOK H28.
4. FOR DESIGN FEATURE PURPOSES, THIS STANDARD TAKES PRECEDENCE OVER PROCUREMENT DOCUMENTS REFERENCED HEREIN.
5. REFERENCED DOCUMENTS SHALL BE OF THE ISSUE IN EFFECT ON DATE OF INVITATION FOR BID.
6. MARKING SHALL CONSIST OF THE MS PART NUMBER AND MANUFACTURERS IDENTIFICATION IN ACCORDANCE WITH MIL-STD-130.
7. THIS STANDARD IS NOT INTENDED TO LIMIT CONSTRUCTION TO FEATURES OTHER THAN AS SHOWN HEREON BY DIMENSIONS, NOTATIONS OR REFERENCED DOCUMENTS.
8. DETAILS OF THIS ASSEMBLY SHALL BE IN ACCORDANCE WITH REFERENCED DRAWING (SEE ENGINEERING PARTS LIST EPL 7069697) AND MAY BE OBTAINED FROM U. S. ARMY TANK-AUTOMOTIVE CENTER, WARREN, MICHIGAN, ATTN: STANDARDIZATION BRANCH, SMOTA-RSS.2.
9. APPLICABLE PROVISIONS OF ABC ARMY STD 137 AND STANAG 4009 PART II ARE MARKED *.

CERTAIN PROVISIONS (SEE NOTE 9) OF THIS STANDARD ARE THE SUBJECT OF INTERNATIONAL STANDARDIZATION AGREEMENTS. WHEN REVISION OR CANCELLATION OF THIS STANDARD IS PROPOSED, THE DEPARTMENTAL CUSTODIANS WILL INFORM THEIR RESPECTIVE DEPARTMENTAL STANDARDIZATION OFFICE SO THAT APPROPRIATE ACTION MAY BE TAKEN RESPECTING THE INTERNATIONAL AGREEMENTS CONCERNED.

MS PART NO.	ENGINEERING PARTS LIST
MS 53035 -1	ORD 7069697

APPROVED 13 SEPTEMBER 1962 REVISED 5 NOVEMBER 1963

P A MO	International Interior	TITLE	FIFTH WHEEL ASSEMBLY-33 INCH NON-UNIVERSAL,DOLLY,TRAILER CONVERTER, 19,000 LBS. CAPACITY	MILITARY STANDARD
Other Cust				MS 53035
Navv-MC				
AF-WRA				
PROCUREMENT SPECIFICATION	NONE	SUPERSEDES		SHEET 1 OF 1