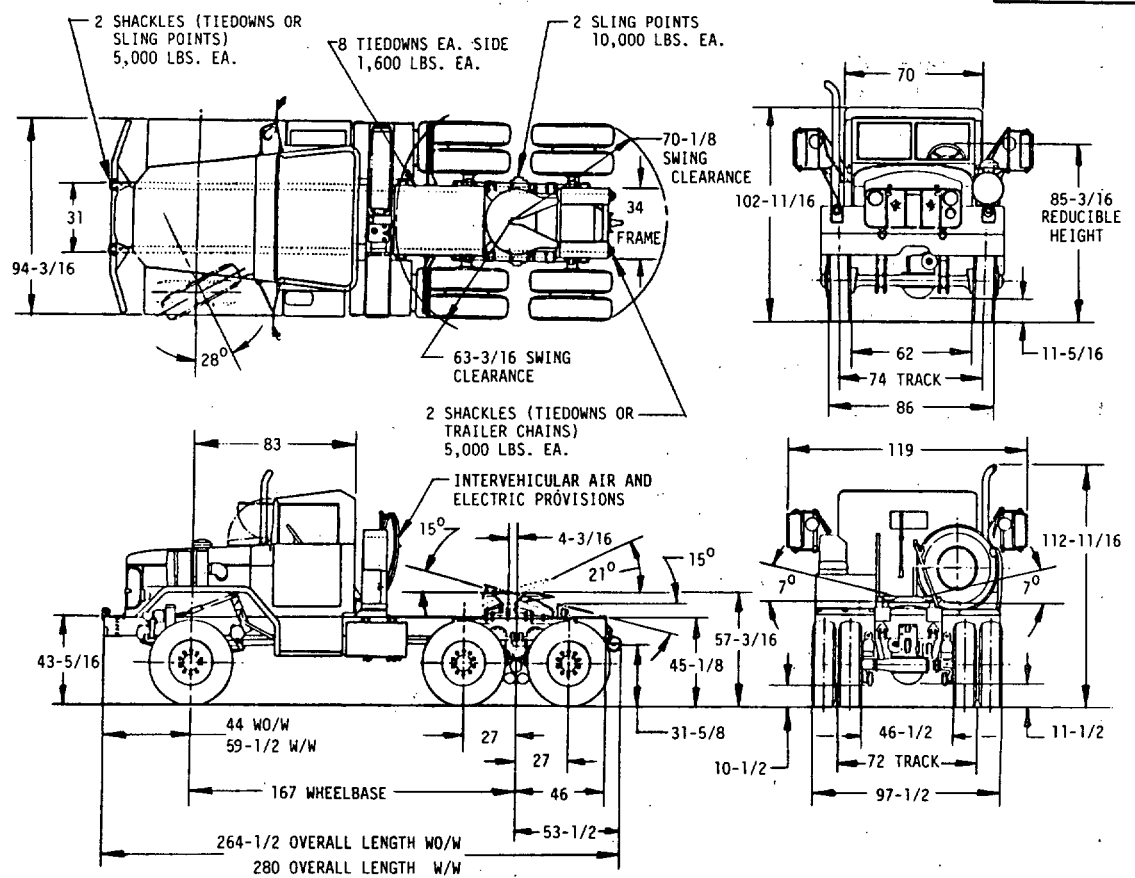


FED. SUP CLASS  
2320



VEHICLE CHARACTERISTICS

<b>BRIDGE CLASSIFICATION: (SHORT TONS)</b>		<b>FUEL SYSTEM: FUEL TANK CAPACITY - 2 TANKS @ 55 GALS EA; FUEL PUMP, IN TANK; FUEL INJECTION.</b>	
	W/O/W	W/W	
EMPTY	10	9	
WITH PAYLOAD	18	17	
<b>CURB WEIGHT: FULLY EQUIPPED LESS PAYLOAD &amp; CREW</b>		<b>CLUTCH: TYPE SINGLE DRY DISC DIA 15 EFFECTIVE AREA 70.2 SQ IN</b>	
FRONT	9,470 LBS	10,260 LBS	PRESSURE PLATE 8735507
REAR BOGIE	10,030 LBS	9,905 LBS	DRIVEN MEMBER 11664387
TOTAL	19,500 LBS	20,165 LBS	
<b>TRAILER LOAD: ON FIFTH WHEEL</b>		<b>TRANSMISSION: MANUAL 8333627-1</b>	
	15,000 LBS	15,000 LBS	NO OF SPEEDS - 5 FWD, 1 REV; RATIOS;
<b>SEMI-TRAILER WEIGHT: (W/PAYLOAD)</b>		1ST - 6.07:1; 2ND - 3.40; 3RD - 1.79;	
	37,500 LBS	37,500 LBS	4TH - 1.00; 5TH - .78; REV. - 6.09
<b>GROSS COMBINATION WEIGHT: FULLY EQUIPPED WITH PAYLOAD, LESS CREW</b>		PTO OPENINGS 2 SAE 6 BOLT, EACH SIDE OF TRANSMISSION. LUBRICANT CAPACITY; W/PTO 11 QTS; W/O PTO 9 QTS.	
FRONT	9,845 LBS	10,635 LBS	<b>TRANSFER CASE: W/O/PTO 7748580</b>
REAR BOGIE	24,655 LBS	24,530 LBS	NO OF SPEEDS 2 FRONT; HIGH - 1.07:1
TRAILER BOGIE	22,500 LBS	22,500 LBS	LOW - 2.16:1, REAR; HIGH - 1.00:1,
TOTAL	57,000 LBS	57,665 LBS	LOW - 2.02:1 CONTROL OF FRONT AXLE DRIVE, AUTOMATIC OVERRUNNING, LUBRICANT CAPACITY 7 QTS ONE PTO OPENING.
(ADD 400 LBS FOR 2 MAN CREW W/EQUIPMENT)			
<b>TOWED LOAD ALLOWANCE: (PINTLE)</b>		<b>PINTLE: MS51117-1</b>	
	15,000 LBS	15,000 LBS	MAX. VERTICAL LOAD (STATIC) 1,500 LBS

This military standard is approved for use by the US Army Tank-Automotive Command, Department of the Army, and is available for use by all Departments and Agencies of the Department of Defense.  
DISTRIBUTION STATEMENT A. Approved for public release; distribution is unlimited.

MS PART NO.	ENGINEERING DRAWING	DESCRIPTION
MS52190-1	8736862	WITH WINCH
MS52190-2	8736863	LESS WINCH

P. A.: ARMY-AT Other Cust	INTERNATIONAL INTEREST	TITLE <b>TRUCK: TRACTOR, 5-TON, 6x6, M818</b>	MILITARY STANDARD <b>MS52190(AT)</b>
PROCUREMENT SPECIFICATION MIL-T-740	SUPERSEDES:	SHEET 1 OF 2	

APPROVED 14 JUN 85 REVISED

FED. SUP CLASS  
2320

VEHICLE CHARACTERISTICS CONTINUED

**SHIPPING DIMENSIONS:**  
 CUBIC FEET 1,272 1,346  
 SQUARE FEET 179 190

**HEIGHT: WITH RING MOUNT (MACHINE GUN)**  
 WO/W W/W  
 121-5/16 121-5/16

**ANGLE OF APPROACH: (LOADED)**  
 44° 33°

**ANGLE OF DEPARTURE: (LOADED)**  
 62° 62°

**ANGLE OF BREAKOVER: (LOADED)**  
 38° 38°

**MINIMUM TURNING RADIUS: (WALL TO WALL)**  
 470-7/16 488-7/16

**FORDING DEPTH: WITH KIT 78 LESS KIT 30**

**CENTER OF GRAVITY: (AT CURB WEIGHT)**  
 ABOVE GROUND 38 38-1/2  
 REAR OF CENTERLINE OF FRONT AXLE 86-3/16 82-11/16

**CENTER OF GRAVITY: (WITH PAYLOAD)**  
 ABOVE GROUND N/A N/A  
 REAR OF CENTERLINE OF FRONT AXLE 119-3/16 116-7/16

**ENGINE:**  
 6 CYL IN-LINE 11664325-1  
 COMPRESSION IGNITION FUEL INJECTION  
 DISPLACEMENT 855 CU IN  
 BORE AND STROKE 5.5 X 6  
 COMPRESSION RATIO 15.8:1 FUEL DIESEL  
 OCTANE/CETANE #40  
 HORSEPOWER; GROSS 240 @ 2100 RPM  
 NET 210 @ 2100 RPM  
 TORQUE GROSS; 658 LB FT @ 1500 RPM  
 NET 600 LB FT @ 1500 RPM  
 CRANK CASE CAPACITY; W/O FILTER 24 QTS  
 W/FILTER 28 QTS  
 GOVERNOR; TYPE AUTOMATIC  
 COOLING SYSTEM CAPACITY; 37-1/2 QTS  
 PUMP TYPE DRIVE 2 V BELTS  
 GOVERNED SPEED; 2100 RPM AT FULL LOAD

**BRAKES: PARKING TYPE INTERNAL/EXTERNAL**  
 DRUM SIZE 14 DIA X 3 WIDE  
 EFFECTIVE AREA 68 SQ IN

**AXLES: FRONT;** 11664723  
 REAR 8758346  
 QTY 2, TYPE SINGLE SPEED, DOUBLE REDUC-  
 TION RATIO 6.443:1, LUBRICANT CAPACITY;  
 12 QTS EACH

**FRAME:** 11664502  
 TYPE RAIL CHANNEL SIDE RAIL DIMENSIONS  
 9 X 3 X 5/16 SECTION MODULUS 10.71 IN<sup>3</sup>  
 NO. OF CROSSMEMBERS 6

**FRONT SPRINGS:** 7411110  
 3 WIDE X 50 LONG; NO OF LEAVES 12; RATE  
 2,271 LB/IN; TYPE SEMI-ELLIPTICAL;  
 SHOCK ABSORBERS DIRECT ACTING, QTY 2.

**REAR SPRINGS:** 7409613  
 SIZE 4 WIDE X 59-1/4 LONG NO. OF LEAVES  
 13, RATE 5,983 LB/IN; TYPE SEMI-ELLIP-  
 TICAL INVERTED, QTY 2.

**TIRES W/FLAP AND TUBE:** MIL-T-12459  
 SIZE 11.00 X 20 LOAD RATING F  
 TREAD DESIGN NDCC NO. OF SPARES 1  
 TUBE ZZ-1-550

**WHEELS: TYPE STEEL DISC,** 7388820  
 SIZE 20 DIA X 7-1/2 WIDE RING 7389061  
 FRONT SINGLE, REAR DUAL, OFFSET 6-3/4

**BRAKES: SERVICE, TYPE AIR ASSISTED**  
 HYDRAULIC, INTERNAL EXPANDING DRUM  
 SIZE 16-1/2 X 5-1/2, EFFECTIVE AREA  
 FRONT 339 SQ IN REAR 678 SQ IN  
 SEMI-TRAILER AIR LINES QTY 2 7954876  
 COUPLERS QTY 2 MS35746-1

**ELECTRICAL SYSTEM: WATERPROOFED, RADIO**  
 SUPPRESSED PER MIL-STD-461.  
 POTENTIAL 24 V STARTING MTR 11664475  
 ALTERNATOR 10929868  
 RATING 60 AMP; DRIVE 2 V BELTS  
 BATTERIES; QTY 4 TYPE 12V 6TN MS35000-3  
 TRAILER COUPLING SOCKET 7363002  
 TURN SIGNAL; SOLID STATE FLASHER  
 CONTROL 11613631  
 11613632

**LIGHTING; HEADLAMPS** 8741462  
 B.O. DRIVING LAMP 8747988  
 COMPOSITE LAMPS; FRONT 11614156  
 REAR 11614157  
 SEMI TRAILER CONNECTING HARNESS  
 7728814

**PERFORMANCE: APPROX. 4 MPG AT GCW MAX**  
 SPEED 52 MPH; MAXIMUM GRADE 46%; GRADE-  
 ABILITY 2.4%; CRUISING RANGE 400 MILES

**FIFTH WHEEL: KING PIN 2 DIA 11669413-1**  
 APPROACH RAMPS & DECK PLATES.

**ON-VEHICLE EQUIPMENT: (OVE)**  
 BASIC ISSUE ITEMS 12300877  
 ADDITIONAL AUTHORIZED LIST ITEMS  
 12300998

- NOTES:  
 1. DIMENSIONS ARE IN INCHES AND ARE SHOWN FOR ENGINEERING REFERENCE ONLY.  
 2. REFERENCED DOCUMENTS SHALL BE OF THE ISSUE IN EFFECT ON DATE OF INVITATIONS FOR BID.  
 3. THIS VEHICLE SHALL BE IN ACCORDANCE WITH REFERENCED ENGINEERING DRAWINGS, COPIES  
 WHICH MAY BE OBTAINED FROM: US ARMY TANK-AUTOMOTIVE COMMAND, WARREN, MICH. 48090.

MS PART NO.	ENGINEERING DRAWING	DESCRIPTION
MS52190-1	8736862	WITH WINCH
MS52190-2	8736863	LESS WINCH

P. A. ARMY-AT Other Cust	INTERNATIONAL INTEREST	TITLE <b>TRUCK: TRACTOR, 5-TON, 6x6, M818</b>	MILITARY STANDARD
			<b>MS52190(AT)</b>
PROCUREMENT SPECIFICATION MIL-T-740	SUPERSEDES:	SHEET <b>2</b> OF <b>2</b>	

This military standard is approved for use by the US Army Tank-Automotive Command, Department of the Army, and is available for use by all Departments and Agencies of the Department of Defense.  
 DISTRIBUTION STATEMENT A. Approved for public release; distribution is unlimited.

APPROVED 14 JUN 85 REVISED