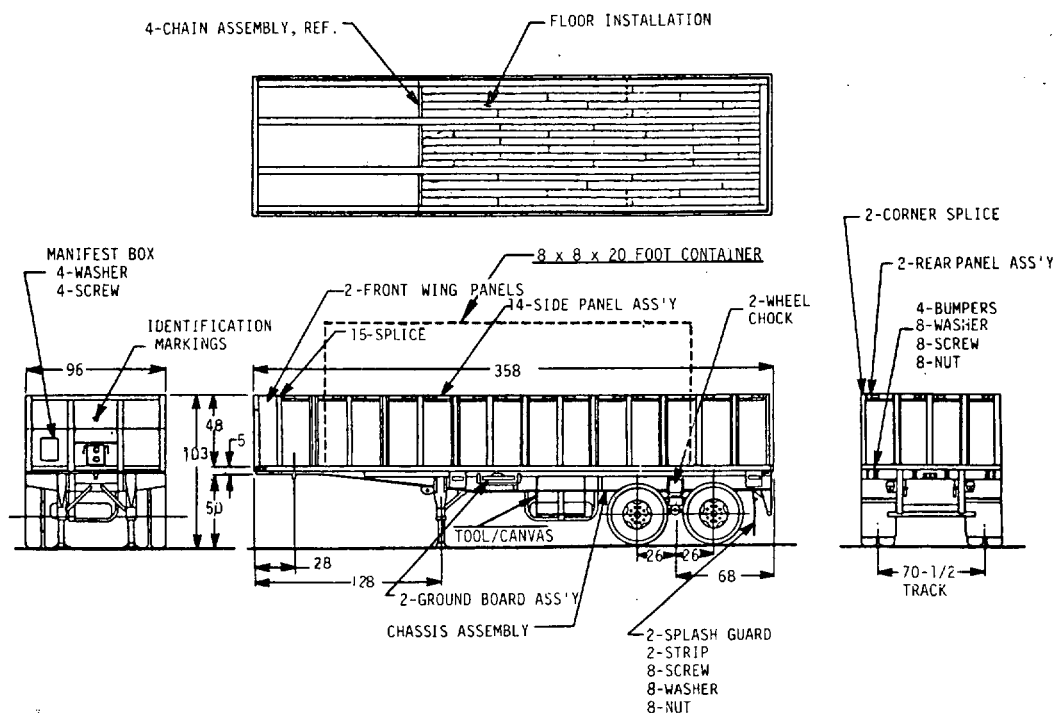


FED. SUP CLASS
2330

This military standard is approved for use by the US Army Tank-Automotive Command, Department of the Army, and is available for use by all Departments and Agencies of the Department of Defense.

DISTRIBUTION STATEMENT A. Approved for public release; distribution is unlimited.

APPROVED 3 MAY 85 REVISED

| | | |
|--|--|--|
| P.A. ARMY-AT Other Cust | TITLE SEMITRAILER, FLAT BED: BREAKBULK/CONTAINER TRANSPORTER, 22-1/2 TON, M871. | MILITARY STANDARD MS52160(AT) |
| PROCUREMENT SPECIFICATION MIL-S-62272 | SUPERSEDES: | SHEET OF 2 |

FED. SUP CLASS
2330

VEHICLE CHARACTERISTICS

| | | | |
|-------------------------------------|------------------------|--|---------------------------------|
| <u>PRIME MOVER:</u> | | <u>AXLES:</u> | |
| 5 TON M818 TRUCK TRACTOR | | QUANTITY | 2 |
| SECONDARY: M195 TRUCK TRACTOR 6 X 4 | | | |
| IMPROVED HIGHWAY USE ONLY | | <u>HUBS:</u> | |
| | | QUANTITY | 4 |
| <u>CURB WEIGHT:</u> | <u>BREAKBULK</u> | <u>WHEELS:</u> | |
| W/O PAYLOAD | 15,900 LBS (7,212 KG) | TYPE | 7388820 |
| | CONTAINER(S) | RIM SIZE | 7-1/2 X 20 |
| W/O PAYLOAD | 15,900 LBS (7,212 KG) | STUD CIRCLE DIA | 11-1/4 IN (28.58 CM) |
| | BREAKBULK | SPACING OF DUAL WHEELS | 13 IN (33.27 CM) |
| PAYLOAD | 45,000 LBS (20,412 KG) | | |
| | CONTAINER(S) | <u>TIRES:</u> | |
| PAYLOAD | 44,800 LBS (20,321 KG) | SIZE | 11.00 X 20-12 PLY, LOAD RANGE F |
| | BREAKBULK | TREAD DESIGN | H1-WAY |
| GROSS WEIGHT | 60,900 LBS (27,624 KG) | SPARE | ONE |
| | CONTAINER(S) | AIR PRESSURE | 75 PSI |
| GROSS WEIGHT | 60,700 LBS (27,533 KG) | (ON & OFF HIGHWAY DRIVING) | |
| <u>WEIGHT DISTRIBUTION:</u> | | <u>HEIGHT OF KINGPIN PLATE: (UNCOUPLED)</u> | |
| | BREAKBULK | 50 + 1 IN | |
| | (W/O PAYLOAD) | | |
| KINGPIN | 4,753 LBS (2,156 KG) | <u>SHIPPING DATA:</u> | |
| | (W/PAYLOAD) | CUBIC FEET (OVERALL) | |
| KINGPIN | 24,033 LBS (10,901 KG) | 2153 CUBIC FEET (60.966 CU M) | |
| | (W/O PAYLOAD) | LENGTH | 358 IN (909 CM) |
| AXLES | 11,147 LBS (5,056 KG) | WIDTH | 96 IN (244 CM) |
| | (W/PAYLOAD) | HEIGHT (BED) | 55 IN (140 CM) |
| AXLES | 36,867 LBS (16,723 KG) | <u>SERVICE BRAKES:</u> | |
| | (W/O PAYLOAD) | TYPE | |
| LANDING LEGS | 7,688 LBS (3,487 KG) | S-CAM, TWO SHOE | |
| | (W/PAYLOAD) | RESERVOIR TANK | |
| LANDING LEGS | 38,869 LBS (17,631 KG) | CAPACITY 2,800 CUBIC IN (45,883.78 CU CM) | |
| | (W/O PAYLOAD) | AIR ACTUATION | |
| AXLES | 8,212 LBS (3,725 KG) | <u>ELECTRICAL SYSTEM:</u> | |
| | (W/PAYLOAD) | TYPE | |
| AXLES | 22,031 LBS (9,993 KG) | 12/24 VOLT LIGHTING | |
| <u>WEIGHT DISTRIBUTION:</u> | | <u>ADDITIONAL FEATURES:</u> | |
| | CONTAINERIZED | TRANSPORTS | |
| | (W/O PAYLOAD) | ONE 20 FT (6.096 M) | |
| KINGPIN | 5,680 LBS (2,576 KG) | TWO 10 FT (3.048 M) | |
| | (W/PAYLOAD) | THREE 6.66 FT (2.03 M) | |
| KINGPIN | 25,381 LBS (11,513 KG) | FOUR 5 FT (1.520 M) | |
| | (W/O PAYLOAD) | LONG CONTAINERS | |
| AXLES | 10,220 LBS (4,636 KG) | <u>AUXILIARY TIE DOWN KIT: (20 REMOVABLE</u> | |
| | (W/PAYLOAD) | FITTINGS) OPTIONAL | |
| AXLES | 35,319 LBS (16,020 KG) | <u>TARPAULIN:</u> | |
| | (W/O PAYLOAD) | 7979195 | |
| LANDING LEGS | 9,177 LBS (4,163 KG) | <u>WHEEL BEARINGS:</u> | |
| | (W/PAYLOAD) | TAPER | |
| LANDING LEGS | 41,048 LBS (18,619 KG) | | |
| | (W/O PAYLOAD) | | |
| AXLES | 6,723 LBS (3,049 KG) | | |
| | (W/PAYLOAD) | | |
| AXLES | 19,652 LBS (8,914 KG) | | |

NOTES:

1. DIMENSIONS ARE IN INCHES AND ARE SHOWN FOR ENGINEERING REFERENCE ONLY.
2. REFERENCED DOCUMENTS SHALL BE OF THE ISSUE IN EFFECT ON DATE OF INVITATIONS FOR BID.
3. THIS VEHICLE SHALL BE IN ACCORDANCE WITH REFERENCED ENGINEERING DRAWINGS, COPIES WHICH MAY BE OBTAINED FROM: US ARMY TANK-AUTOMOTIVE COMMAND, WARREN, MICH. 48093.

APPROVED 3 MAY 85 REVISED

P.A. ARMY - AT
Other CustTITLE SEMITRAILER, FLAT BED:
BREAKBULK/CONTAINER TRANSPORTER,
22-1/2 TON, M871.

MILITARY STANDARD

MS52160(AT)

PROCUREMENT SPECIFICATION
MIL-S-62272

SUPERSEDES:

SHEET 2 OF 2