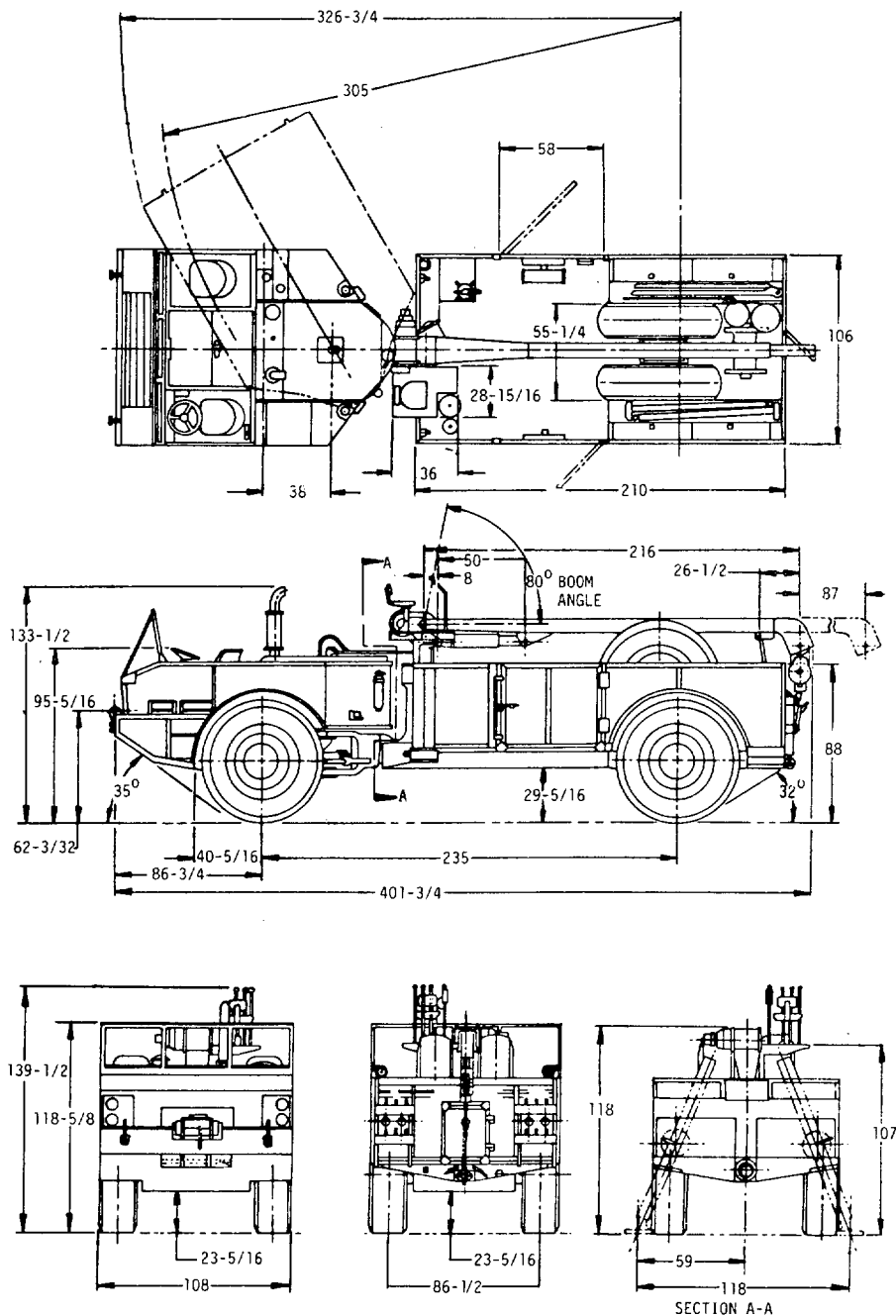


FED. SUP CLASS  
2320

USER ACTIVITIES:

REVIEWER ACTIVITIES:

This military standard is approved for use by the US Army Tank-Automotive Command, Department of the Army, and is available for use by all Departments and Agencies of the Department of Defense.



(C) ENTIRE STANDARD REVISED

|             |                    |
|-------------|--------------------|
| MS PART NO. | ENGINEERING DWG NO |
| MS 52113-1  | 11614318           |

|  |                        |  |   |
|--|------------------------|--|---|
| P. A. ARMY-AT                            | INTERNATIONAL INTEREST | TITLE  | MILITARY STANDARD<br><b>MS52113(AT)</b> |
| Other Cust                               |                        | TRUCK, WRECKER, 10 TON, 4X4,<br>MILITARY DESIGN, M 553 |   |
| PROCUREMENT SPECIFICATION<br>MIL-T-62131 | SUPERSEDES:            | SHEET 1 OF 2   |   |

DD FORM 1 MAY 73 672-1 LIMITED COORDINATION

PREVIOUS EDITIONS OF THIS FORM ARE OBSOLETE

APPROVED 8 OCTOBER 1969 REVISED (C) 15 JAN 85

FED. SUP CLASS  
2320

## VEHICLE CHARACTERISTICS

|   |           |  |           |
|---|-----------|--|-----------|
| MODEL M553; TRUCK WRECKER                 | 11614318  | WINCH HYDRAULIC, REAR; INST'N              | 11614928  |
| GROSS VEHICLE WEIGHT; FULLY EQUIPPED      |           | WINCH CAPACITY 45000                       | 11614933  |
| WO/PAYLOAD                                | W/PAYLOAD | CABLE 0.88 DIA.                            | 300 FT    |
| FRONT AXLE 20500 LBS                      | 23280 LBS | PINTLE 40000 LB. CAPACITY                  | 7722050   |
| REAR AXLE 17370 LBS                       | 22500 LBS | WINCH AND GEAR, FRONT INST'N               | 11635124  |
| TOTAL 37870 LBS                           | 45780 LBS | WINCH, FRONT 10000 LB.                     | 7538687   |
|   |           | CABLE 0.5 IN. DIA. 200FT.                  |           |
| TOWING CAPACITY:                          | 20000 LBS | TIRES: 18.00X33 10 PLY FOUR                | 11618762  |
| MINIMUM TURNING DIA: WALL TO WALL 52.7FT. |           | RIM 33.00X13.00 FOUR                       | 11681132  |
|   |           | VALVE: TIRE FOUR                           | 22-V-25   |
| BODY ASSY, FRONT                          | 11614753  | RING: WHEEL FOUR                           | 11681133  |
| BODY ASSY, REAR                           | 11614883  | TIRE AND RIM ASSY. FOUR                    | 11681140  |
| DOOR ASSY; L.H.                           | 11614495  | GENERAL:                                   |           |
| DOOR ASSY, R.H.                           | 11614500  | STEERING GEAR INST'N                       | 11614610  |
| DOOR ASSY, REAR                           | 11614697  | STEERING LINKAGE INST'N                    | 11614948  |
| MIRROR REARVIEW INST'N                    | 11614884  | STEERING PUMP, TAN, AND LINES INST'N       | 11614947  |
| WINDSHIELD AND FRAME INST'N               | 11614950  | STEERING CYLINDER; INST'N                  | 11614672  |
| DRIVE SHAFT, REAR INST'N                  | 11614935  | BILGE PUMP, FRONT INST'N                   | 11614878  |
| POWER PLANT: INST'N                       | 11614404  | BILGE PUMP, REAR INST'N                    | 11614937  |
| ENGINE DIESEL;                            |           | MIN RATE 46 GPM AS INSTALLED               |           |
| CYLINDERS-6, DISPLACEMENT 638 CU. IN.     |           | CANOPY, FRONT INST'N                       | 11614944  |
| BORE AND STROKE, 4.75 X 6.00 IN. COMPRES- |           | CANOPY, FRAME, FRONT INST'N                | 11614945  |
| SION RATIO 17.5:1 FUELS DIESEL, JP4,      |           | CANOPY, FRAME, REAR INST'N                 | 11614938  |
| FURNACE #2                                |           | COMPARTMENT, OPERATOR INST'N               | 11650956  |
| LUBE CAPACITY 26 QTS, FUEL TANK CAPAC-    |           | COMPARTMENT, COMPANION INST'N              | 11650955  |
| ITY 106 GALLONS.                          |           | AIR SYSTEM, FRONT INST'N                   | 11614881  |
| BHP. MAX. GROSS 213 MAX. NET 192 @ 2200   |           | AIR SYSTEM, REAR INST'N                    | 11614936  |
| RPM.                                      |           | FAN AND DRIVE INST'N                       | 11614965  |
| COOLING SYSTEM CAPACITY 104 QTS.          |           | FAIRLEAD INST'N                            | 11614931  |
| TORQUE MAX. GROSS 578 FT. LBS, MAX. NET   |           | GAGE AND PANEL INST'N                      | 11614882  |
| 547 @ 1550 RPM.                           |           | STENCIL AND STOWAGE INST'N                 | 11618351  |
| POWER PLANT ASSY:                         | 11681062  | STOWAGE, TOOLS AND EQUIPMENT               | 11618101  |
| POWER TRAIN, FRONT INST'N                 | 11614402  | CONTROL, GOVERNOR INST'N                   | 11614810  |
| POWER TRAIN, REAR INST'N                  | 11614403  | CONTROL HYD. WINCH INST'N                  | 11614934  |
| HITCH AND PIVOT INST'N                    | 11614300  | CONTROL, PARKING BRAKE INST'N              | 11620027  |
| AIR CLEANER, ENGINE INST'N                | 11614943  | CONTROL, TRANSMISSION INST'N               | 11614880  |
| RADIATOR INST'N                           | 11614941  | CONTROL, WINCH INST'N                      | 11620323  |
| FUEL SYSTEM INST'N                        | 11614949  | HYDRAULIC OIL COOLER INST'N                | 11614932  |
| EXHAUST EXTENSION INST'N                  | 11614942  | HYDRAULIC SYSTEM INST'N                    | 11614927  |
| LINES, VALVE AND MOTOR INST'N             | 11624378  | ACCESSORIES AND KITS:                      |           |
| CRANE; INST'N                             | 11620400  | PERSONNEL HEATER INST'N                    | 11614956  |
| BOOM SUPPORT; INST'N                      | 11614930  | SHIPPING AND STOWAGE KIT                   | 11632925  |
| LIFTING CAPACITY:                         |           | REAR CANOPY KIT                            | 11614938  |
| AT 16 FT RADIUS, MINIMUM                  | 10000 LBS | ARCTIC KIT                                 | 11614988  |
| AT 11 FT RADIUS, MINIMUM                  | 15000 LBS | ARCTIC KIT, CRANE CAB                      | 11614987  |
| AT 6 FT RADIUS, MINIMUM                   | 20000 LBS | GUN RING MOUNTING KIT                      | 11614953  |
| OUTRIGGER INST'N                          | 11614459  | INFRARED FILTER KIT                        | 11624639  |
| ELECTRICAL SYSTEM: FRONT INST'N           | 11632950  | TIRE CHAIN ASSY                            | 11632607  |
| 24 VOLT SYSTEM, REAR INST'N               | 11614992  | PERFORMANCE: MIN. 2.5 MPH, MAX. 30.5 MPH   |           |
| STARTER                                   | M553011-2 | FUEL CONSUMPTION: W/TYPE 2 DIESEL          |           |
| ALTERNATOR ASSY                           | 10929868  | HIGHWAY, AVERAGE                           | 3.23 MPG, |
| WIRING DIAGRAM TRACTOR                    | 11632955  | CRUISING RANGE:                            | 300 MILES |
| WIRING DIAGRAM TRAILER                    | 11614951  | ACCELERATION: 0 TO 20 MPH IN 12.2 SECONDS. |           |

## NOTES:

1. DIMENSIONS ARE IN INCHES AND ARE SHOWN FOR ENGINEERING REFERENCE ONLY.
2. REFERENCED DOCUMENTS SHALL BE OF THE ISSUE IN EFFECT ON DATE OF INVITATIONS FOR BID.
3. THIS VEHICLE SHALL BE IN ACCORDANCE WITH REFERENCED ENGINEERING DRAWINGS, COPIES WHICH MAY BE OBTAINED FROM: US ARMY TANK-AUTOMOTIVE COMMAND, WARREN, MICH. 48090.

© ENTIRE STANDARD REVISED

|  |                           |   |                                  |                                   |
|--|---------------------------|---|----------------------------------|-----------------------------------|
| P. A. ARMY-AT<br>Other Cust              | INTERNATIONAL<br>INTEREST | TITLE<br>TRUCK, WRECKER, 10 TON, 4X4,<br>MILITARY DESIGN, M 553 | MS PART NO.<br>MS52113-1         | ENGINEERING<br>DWG NO<br>11614318 |
| PROCUREMENT SPECIFICATION<br>MIL-T-62131 |                           |   | MILITARY STANDARD<br>MS52113(AT) |                                   |
| SUPERSEDES:                              |                           |   | SHEET 2 OF 2                     |                                   |

DD FORM 672-1 LIMITED COORDINATION

PREVIOUS EDITIONS OF THIS FORM ARE OBSOLETE

APPROVED 8 OCTOBER 1969 REVISED © 15 JAN 85

USER ACTIVITIES:

REVIEWER ACTIVITIES:

This military standard is approved for use by the US Army Tank-Automotive Command, Department of the Army, and is available for use by all Departments and Agencies of the Department of Defense.