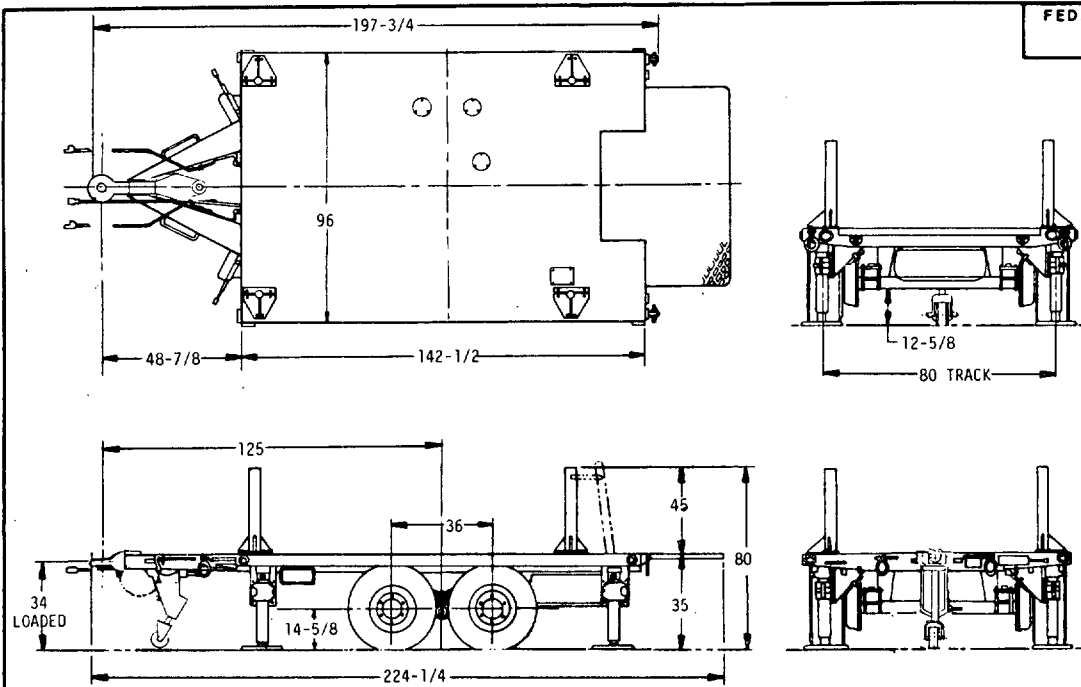


FED. SUP CLASS
233C



VEHICLE CHARACTERISTICS

WEIGHT:	EMPTY	LOADED	WHEELS: DISC AND RIM ASSY	11592642
PAYLOAD: INC. BODY,		8000	SIZE,	16-1/2 x 9-3/4
ON WHEELS:	4904	12658	VALVE	MS51368-2
" LUNETTE:	216	462	WHEEL BEARINGS OUTER	10948079
TOTAL LBS	5120	13120	WHEEL BEARINGS INNER	10945151
			(AFBMA) BEARINGS OUTER	392-3920E
			(AFBMA) BEARINGS INNER	3994-3920E
MAXIMUM TOWING SPEED:			TIRES: 12 X 16-1/2 TEN PLY	11636428
LOADED		10 MPH	TREAD,	SUPERSINGLE
HIGHWAY		50 MPH		
FORDING DEPTH:		36 IN	BRAKES: AIR/HYDRAULIC	INST'N 11592673
			BRAKE ASSY; R H AND L H	11592609
GENERAL:			EMERGENCY RELAY VALVE	MS53004-1
TO PROVIDE A TRAILER-MOUNTED, DOUGH-MIXING			AIR RESERVOIR	11636427
OUTFIT FOR MAKING BREAD IN THE FIELD. THIS			HUB	8357986
UNIT SUPPLIES THE DOUGH IN TWO LB. LOAFS			DRUM, 15 X 3	7521662
FOR THREE TRAILER-MOUNTED FIELD BAKERY OVENS.			ADAPTER	7521663
LUNETTE:			HAND BRAKE:	INST'N 11636445
SAFETY CHAIN, TWO	11682150		HAND BRAKE ASSY	11636502
LANDING GEAR SUPPORT ASSY	7411027			
STANCHIONS, FOUR	11682170		ELECTRICAL SYSTEM:	INST'N 11592674
	11636493		POTENTIAL	24 VOLTS
FRAME: ASSY			COMPOSITE TAILLIGHT,	
DECK PLATE	INST'N 11636426		STOP, TURN AND MARKER	11614157
LEVELING JACK	INST'N 11636425		REFLECTOR, RED, FOUR	MS35387-1
PLATE, PLATFORM RETAINER, TWO	INST'N 11636436		REFLECTOR, AMBER, FOUR	MS35387-2
PLATFORM ASSY	11636484			
	11636450		GENERAL:	
SUSPENSION: TANDEM	INST'N 11592608		STOP, BUMPER ASSY, FOUR	10914500
LOAD-BEARING CAPACITY	10000 LBS		SHACKLE, LIFTING AND TIE DOWN,	
AXLES, HUB AND DRUM ASSY, TWO	11592609		FOUR	11592598
SPRINGS, 3-1/2 X 40-1/4	11592616		CONTAINER ASSY, MANUAL	10950595
SIX LEAVES	11592638-2639-2640		CARRIER ASSY, SPARE TIRE INST'N	11592671
SPACER ASSY, SPRING	11592610			
AXLE TUBE ASSOYS, FRONT AND REAR	11592672			
BRACKET ASSY, TRUNION, TWO	7521649			
SEAL ASSY, AXLE				

NOTES:

- DIMENSIONS ARE IN INCHES AND ARE SHOWN FOR ENGINEERING REFERENCE ONLY.
- REFERENCED DOCUMENTS SHALL BE OF THE ISSUE IN EFFECT ON DATE OF INVITATIONS FOR BID.
- THIS VEHICLE SHALL BE IN ACCORDANCE WITH REFERENCED ENGINEERING DRAWINGS, COPIES OF WHICH MAY BE OBTAINED FROM: US ARMY TANK-AUTOMOTIVE COMMAND, WARREN, MICH. 48090.
- SUBJECT OF NATO STANAG 2805-A(EDITION 3). DO NOT REVISE OR CHANGE.

(B) ENTIRE STANDARD REVISED

MS PART NO.	ENGINEERING DWG NO.
MS 52110 -1	8736832

P.A. ARMY- AT Other Cust	TITLE TRAILER, FLATBED; 4 TON, 4 WHEEL, MILITARY DESIGN, M 795	MILITARY STANDARD	
		MS52110(AT)	
PROCUREMENT SPECIFICATION MIL-T-62073	SUPERSEDES:	SHEET	OF

This military standard is approved for use by the US Army Tank-Automotive Command, Department of the Army, and is available for use by all Departments and Agencies of the Department of Defense.
DISTRIBUTION STATEMENT A. Approved for public release; distribution is unlimited.

APPROVED 1 OCT 1969 REVISED (B) 20 MAY 85