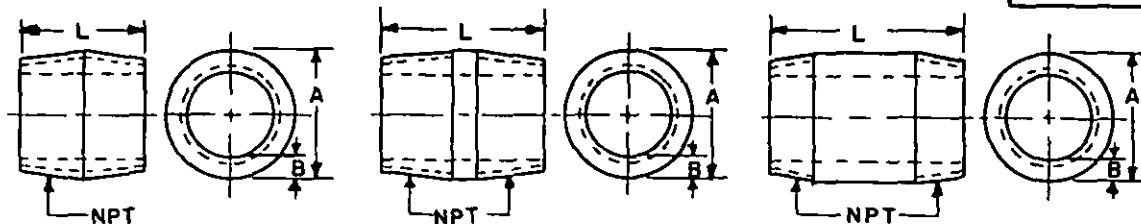


FED. SUP CLASS
4730

* CLOSE TYPE

▲ SHORT TYPE

LONG TYPE

NOMINAL PIPE SIZE	1/8	1/4	3/8	1/2	3/4	1	1-1/4	1-1/2	2	2-1/2	3	4	5	6
A OUTSIDE DIA.	.405	.540	.675	.840	1.050	1.315	1.660	1.900	2.375	2.875	3.500	4.500	5.563	6.625
B THICKNESS	.068	.088	.091	.109	.113	.133	.140	.145	.154	.203	.216	.237	.258	.280
L LENGTH $\pm 1/16$	DASH NUMBERS													
3/4	*1	*25	*49											
7/8														
1														
1-1/8														
1-3/8														
1-1/2	▲6	▲29	▲52	▲75		*121								
1-5/8							*145							
1-3/4								*169						
2	9	32	55	78	▲101	▲124			*193					
2-1/2	10	33	56	79	102	125	▲148	▲171	▲194	*217				
3	11	34	57	80	103	126	149	172	195	▲218	▲241			
3-1/2	12	35	58	81	104	127	150	173	196	219	242			
4	13	36	59	82	105	128	151	174	197	220	243			
4-1/2	14	37	60	83	106	129	152	175	198	221	244			
5	15	38	61	84	107	130	153	176	199	222	245		▲290	▲313
5-1/2	16	39	62	85	108	131	154	177	200	223	246			
6	17	40	63	86	109	132	155	178	201	224	247	270		
7	18	41	64	87	110	133	156	179	202	225	248			
8	19	42	65	88	111	134	157	180	203	226	249			
9	20	43	66	89	112	135	158	181	204	227	250			
10	21	44	67	90	113	136	159	182	205	228	251			
11	22	45	68	91	114	137	160	183	206	229	252			
12	23	46	69	92	115	138	161	184	207	230	253			

NOTES:

- MATERIAL:** Steel shall be in accordance with procurement specification.
- PROTECTIVE COATING:** Black or zinc coating in accordance with procurement specification.
- THREADS:** Nipples shall be threaded with American Standard Taper Pipe Threads (NPT) in accordance with Screw-Thread Standard for Federal Services, FED-STD-H28.
- DIMENSIONS:** All dimensions are in inches unless otherwise specified.
- PART NUMBER:** The MS part number consists of the MS number plus the dash number.
 - For nipples, zinc coated, use the MS number plus the dash number.
Example: MS51953-1
 - For nipples, black coated, add (B) to the dash number.
Example: MS51953-1B
- For design feature purposes, this standard takes precedence over procurement documents referenced herein.
- Reference documents shall be of the issue in effect on date of invitations for bid.
- * These nipples are close type
- ▲ These nipples are short type
- All others are long type.
- For nipple, pipe, extra strong, steel see MS51873.

© Denotes changes

P.A. AR Other Cust 11	TITLE NIPPLE, PIPE, STANDARD, STEEL	MILITARY STANDARD MS51953
PROCUREMENT SPECIFICATION ASTM A 733	SUPERSEDES: CPNX1, CPNX1.1	SHEET 1 OF 1