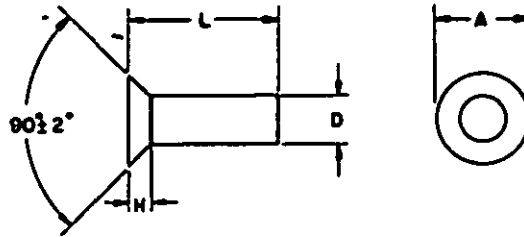


FED. SUP CLASS
5320
 REVISED: GL, IS, MI, MU, XSA
 USER: AS, EL, MC, SH

BODY DIAMETER D	NOM MAX MIN	1/32 0.096 0.090	1/8 0.127 0.121	5/32 0.158 0.152	3/16 0.191 0.182	1/4 0.253 0.244	5/16 0.316 0.304	3/8 0.380 0.365
HEAD DIAMETER A	MAX MIN	.176 .163	.215 .217	.293 .272	.351 .326	.469 .437	.586 .547	.704 .656
HEAD HEIGHT ² H		.040	.053	.066	.079	.106	.133	.159
LENGTH L	BRASS DASH NUMBER							
1/4 5/16 3/8 7/16 1/2	0.250 0.312 0.375 0.438 0.500	1 4	15 16 17 18 19		44 47			
9/16 5/8 3/4 7/8 1	0.562 0.625 0.750 0.875 1.000	7 8	21 23	34	49 50 63 65			
1-3/8 2 2-1/4 3	1.375 2.000 2.250 3.000		25		53 54 55 56			
LENGTH L	COPPER DASH NUMBER							
3/16 1/4 3/8 1/2 5/8	0.188 0.250 0.375 0.500 0.625		113 116 117 118 119		142 143 144 145	157 158		
3/4 7/8 1 1-1/4 1-1/2	0.750 0.875 1.000 1.250 1.500		120		146 147 148 149	159 160 161 162 163	172 173 174 175 176	187 188 189
1-3/4 2 2-1/2	1.750 2.000 2.500		127		151	164 165	177 178	190

1. Because the heads of these rivets are not machined or trimmed, the circumference may be somewhat irregular and edges may be round or flat.
2. For reference only. Variations are controlled by the diameters (A) and (D) and the included angle of the head.

NOTES:

1. **MATERIAL:** Brass, per QQ-W-321, composition 260 or 270, quarter hard.
Copper, per QQ-W-343, type 5.
2. **PROTECTIVE COATING:** Uncoated.
3. **HARDNESS:** Maximum Rockwell hardness shall not exceed B60 as measured on side of shank.
4. **DIMENSIONS:** All dimensions are in inches.
5. **TOLERANCES:** Length L ±0.016 in.
6. **PART NUMBER:** The MS part number consists of the MS number, plus the dash number.
Example: MS51945-1
7. For design feature purposes, this standard takes precedence over procurement documents referenced herein.
8. Referenced documents shall be of the issue in effect on date of invitations for bid.

(A) ENTIRE STANDARD REVISED

P.A. WC Other Cont YD	TITLE RIVET, SOLID-COUNTERSUNK HEAD BRASS OR COPPER	MILITARY STANDARD MS51945
PROCUREMENT SPECIFICATION FF-R-556	SUPERSEDES EXH12	SHEET 1 OF 1

This military standard is mandatory for use by all Departments and Agencies of the Department of Defense. Selection for all new engineering and design applications and for repetitive use shall be made from this document.

DD FORM 672-1 (Continued)

PREVIOUS EDITIONS OF THIS FORM ARE OBSOLETE

APPROVED 24 JUNE 1963 REVISED (A) 7 JULY 1970