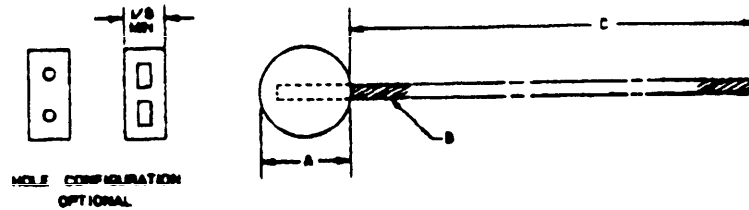


FED SUP CLASS
5340

TYPE I

DASH NUMBER	A DIAMETER	C LENGTH	B WIRE STRAND
5	.50 ± .06	24.00 ± .06	Tinned annealed steel, 2 strand twisted #27 BW-5 gauge wire

TYPE II

DASH NUMBER	A DIAMETER	C LENGTH	B WIRE STRAND
6	.50 ± .06	24.00 ± .06	Soft bare copper, 4 strand twisted #27 BW-5 gauge wire

NOTES:

- MATERIAL:** Seal, Lead, Grade B, QQ-A-300.
Type I - wire, steel, Federal Standard No. 66, steel numbers 1005-1012.
Type II - wire, copper, QQ-B-343.
- FINISH:** Steel wire - tinned, Type I or Type II, MIL-T-10727.
Copper wire - uncoated.
- DIMENSIONS:** All dimensions are in inches unless otherwise specified.
- The MS part number consists of the MS number plus the dash number. Example: MS51938-5. This part number will include the seal and wire as a unit.
- Reference documents shall be of the issue in effect on date of invitations for bid.
- For design feature purposes, this standard takes precedence over procurement documents referenced herein.
- The illustration is not intended to restrict design or shapes not dimensioned.

INTERCHANGEABILITY TABLE

Seals of MS51938 with a wire length of 6 and 12 inches are cancelled after 24 Apr 1968. Seals of MS18018 are cancelled after 23 AUG 68. The cancelled seals may be used until the stock is depleted. Use only the new seals for new design and replacement. Replacement shall be in accordance with this table.

PART NUMBERS		
CANCELLED		NEW
MS18018	MS51938	MS51938
-1	-1	-5
--	-2	-5
-1	-3	-6
--	-4	-6

P.A. NC Other Case AS E2	TITLE SEAL, METALLIC, LEAD AND WIRE	MILITARY STANDARD MS51938
PROCUREMENT SPECIFICATION NONE	SUPPLEMENT SMALLER, MS51938-5	SHEET 1 OF 1

DD FORM 672-1 (CONTINUED)

PREVIOUS EDITIONS OF THIS FORM ARE OBSOLETE

☆ U. S. GOVERNMENT PRINTING OFFICE: 1960-341-511/A-1136

This military standard is mandatory for use by all Departments and Agencies of the Department of Defense. Selection for all new engineering and design applications and for repetitive use shall be made from this document.

APPROVED 17 MAY 63 REVISED 24 APR 68 23 AUG 68