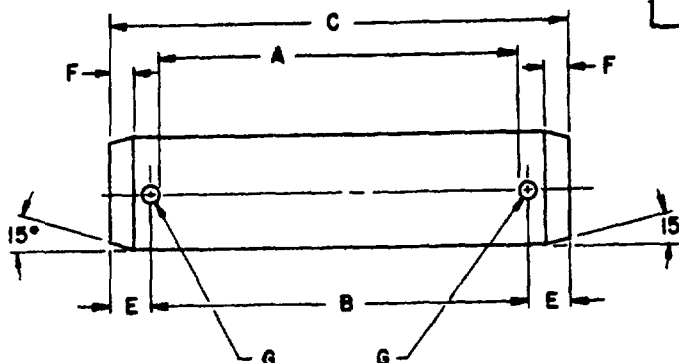
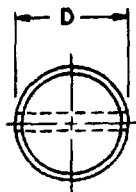


FED SUP CLASS
5315

DIA	{ NOM. MAX. MIN.	1/4		5/16			3/8			
D O ^W		250		.3125			.375			
PIN		.248		.310			.372			
E CENTER TO END		EQUIDISTANT ON BOTH ENDS ±1/64								
F CHAMFFR		1/16			5/64			5/64		
G DRILL DIA		#48 (.076)			#36 (.107)			#36 (.107)		
A	LENGTH CLEAR	B Length C/C	C Length Overall	Dash No	B Length C/C	C Length Overall	Dash No.	B Length C/C	C Length Overall	Dash No
	.430	.506	.750	1	.537	.844	24			
	.550	.626	.875	2	.657	.968	25			
	.680	.756	1.000	3	.787	1.094	26			
	.800	.876	1.125	4	.907	1.218	27	.907	1.218	50
	.930	1.006	1.250	5	1.037	1.344	28	1.037	1.344	51
	1.050	1.126	1.375	6	1.157	1.468	29	1.157	1.468	52
	1.180	1.256	1.500	7	1.287	1.594	30	1.287	1.594	53
	1.300	1.376	1.625	8	1.407	1.718	31	1.407	1.718	54
	1.375				1.482	1.789	32			
	1.430	1.506	1.750	10	1.537	1.844	33	1.537	1.844	56
	1.550	1.626	1.875	11	1.657	1.968	34	1.657	1.968	57
	1.680	1.756	2.000	12	1.787	2.094	35	1.787	2.094	58
	1.800	1.876	2.125	13	1.907	2.218	36	1.907	2.218	59
	1.930	2.006	2.250	14	2.037	2.344	37	2.037	2.344	60
	2.050	2.126	2.375	15	2.157	2.468	38	2.157	2.468	61
	2.180	2.256	2.500	16	2.287	2.594	39	2.287	2.594	62
	2.300	2.376	2.625	17	2.407	2.718	40	2.407	2.718	63
	2.430	2.506	2.750	18	2.537	2.844	41	2.537	2.844	64
	2.550	2.626	2.875	19	2.657	2.968	42	2.657	2.968	65
	2.680	2.756	3.000	20	2.787	3.094	43	2.787	3.094	66
	2.800	2.876	3.125	21	2.907	3.218	44	2.907	3.218	67
	2.930	3.006	3.250	22	3.037	3.344	45	3.037	3.344	68
	3.050	3.126	3.375	23	3.157	3.468	46	3.157	3.468	69

MATERIAL: Steel, Cold Finished, AISI COMP. C1117 or C1118.**FINISH:** Cadmium Plating, Type II, Class 3, Federal Specification QQ-P-416.**DIMENSIONS:** All dimensions are in inches unless otherwise specified.**PART NUMBER:** The MS part number consists of the MS number, plus the Dash Number Example: MS51932-1.**TOLERANCE:** Length Clear $+.01$ $-.00$, Length Overall $+.01$ $-.00$.**NOTES:** (1) Referenced documents shall be of the issue in effect on date of invitations for bid.

P A	WC	TITLE	MILITARY STANDARD
Other Cust		PIN, STRAIGHT-HEADLESS; DRILLED FOR COTTER PINS	MS51932 (WC)
PROCUREMENT SPECIFICATION	SUPERSEDES		SHEET
NONE	BPEX1, BPEX2, BPEX3, BPEX4		1 OF 3

NOTE: When Government drawings, specifications, or other data are used for any purpose other than in connection with a definitely related Government procurement, or operation of the United States Government, the user assumes all responsibility for any obligation whatsoever, and the fact that the Government may have furnished the data in any way supplied the said drawings, specifications, or other data is not to be regarded by implication or otherwise as in any manner licensing the holder or any other person in connection with conveying any right or permission to manufacture or to sell any patented invention that may in any way be related thereto.

Dependent of the
that activity. All other military activities are required
to employ this standard where suitable

FED SUP CLASS
5315

NOTICE—When Government drawings, specifications, or other data are used for any purpose other than in connection with a definitely related Government procurement operation the United States Government hereby incurs no responsibility nor any obligation whatsoever; and the fact that the Government may have furnished drawings or in any way supplied the said drawings, specifications, or other data is not to be regarded by implication or otherwise as in any manner licensing the holder or any other person or corporation or conveying any right, or permission to manufacture use or sell any patented invention that may in any way be related thereto.

DIA. D OP PIN	{ NOM. MAX MIN	7/16			1/2			5/8		
		438			500			.625		
		435			497			.622		
E CENTER TO END		EQUIDISTANT ON BOTH ENDS ±1/64								
F CHAMFER		3/32			7/64			9/64		
G DRILL DIA		#36 (.107)			#28 (.140)			#28 (.140)		
H LENGTH CLEAR		B Length C/C	C Length Overall	Dash No.	B Length C/C	C Length Overall	Dash No	B Length C/C	C Length Overall	Dash No
.800		.907	1.250	70	.940	1.375	99			
.930		1.037	1.375	71	1.070	1.500	100			
1.050		1.157	1.500	72	1.190	1.625	101	1.190	1.688	130
1.180		1.287	1.625	73	1.320	1.750	102	1.320	1.813	131
1.300		1.407	1.750	74	1.440	1.875	103	1.440	1.938	132
1.430		1.537	1.875	75	1.570	2.000	104	1.570	2.063	133
1.550		1.657	2.000	76	1.690	2.125	105	1.690	2.188	134
1.680		1.787	2.125	77	1.820	2.250	106	1.820	2.313	135
1.800		1.907	2.250	78	1.940	2.375	107	1.940	2.438	136
1.930		2.037	2.375	79	2.070	2.500	108	2.070	2.563	137
2.050		2.157	2.500	80	2.190	2.625	109	2.190	2.688	138
2.180		2.287	2.625	81	2.320	2.750	110	2.320	2.813	139
2.300		2.407	2.750	82	2.440	2.875	111	2.440	2.938	140
2.430		2.537	2.875	83	2.570	3.000	112	2.570	3.063	141
2.550		2.657	3.000	84	2.690	3.125	113	2.690	3.188	142
2.680		2.787	3.125	85	2.820	3.250	114	2.820	3.313	143
2.800		2.907	3.250	86	2.940	3.375	115	2.940	3.438	144
2.930		3.037	3.375	87	3.070	3.500	116	3.070	3.563	145
3.050		3.157	3.500	88	3.190	3.625	117	3.190	3.688	146
3.180		3.287	3.625	89	3.320	3.750	118	3.320	3.813	147
3.300		3.407	3.750	90	3.440	3.875	119	3.440	3.938	148
3.430		3.537	3.875	91	3.570	4.000	120	3.570	4.063	149
3.550		3.657	4.000	92	3.690	4.125	121	3.690	4.188	150
3.800								3.940	4.313	151
4.050					4.190	4.625	123	4.190	4.563	152
4.300								4.440	4.813	153
4.550								4.690	5.063	154
4.800								4.940	5.313	155
5.050								5.190	5.563	156

NOTE: For Material, Finish, etc; see sheet 1.

REVISED
APPROVED 5 APRIL 63

P.A. Other Cast	WC	TITLE PIN, STRAIGHT-HEADLESS; DRILLED FOR COTTER PINS	MILITARY STANDARD MS51932 (WC)
PROCUREMENT SPECIFICATION NONE	SUPERSEDES BPEX1, BPEX2, BPEX3, BPEX4	SHEET 2	OF

FED SUP CLASS
5315

NOTICE—When Government drawings, specifications, or other data are used for any purpose other than in connection with a definitely related Government procurement operation the United States Government thereby incurs no responsibility nor any obligation whatsoever; and the fact that the Government may have furnished, or in any way supplied the said drawings, specifications, or other data is not to be regarded by implication or otherwise as an endorsement, or in any manner licensing the holder or any other person or corporation or conveying any rights or permission to manufacture, use, or sell any patented invention that may in any way be related thereto.

DIA. D OP PIN	NOM. MAX. MIN.	3/4			7/8			1		
		750			875			1 000		
		.747			.872			.997		
E CENTER TO END		EQUIDISTANT ON BOTH ENDS $\pm 1/64$								
F CHAMFER		5/32			3/16			7/32		
G D ⁷ L DIA.		#17 (.173)			#17 (.173)			#17 (.173)		
A LENGTH CLEAR	B Length C/C	C Length Overall	Dash No.	B Length C/C	C Length Overall	Dash No.	B Length C/C	C Length Overall	Dash No.	
.550	.723	1 313	157							
.800	.973	1 563	158	.973	1 625	188	.973	1 688	218	
.930	1 103	1 688	159	1.103	1.750	189	1 103	1.813	219	
1.050	1.223	1 813	160	1 223	1 875	190	1.223	1 938	220	
1 180	1.353	1 938	161	1.353	2.000	191	1.353	2.063	221	
1 300	1.473	2.063	162	1.473	2.125	192	1.473	2.188	222	
1.430	1.603	2.188	163	1 603	2 250	193	1 603	2.313	223	
1.550	1.723	2.313	164	1 723	2.375	194	1 723	2 438	224	
1.680	1.853	2.438	165	1 853	2 500	195	1 853	2 563	225	
1.800	1.973	2.563	166	1.973	2 625	196	1.973	2 688	226	
1 930	2 103	2.688	167	2.103	2 750	197	2 103	2 813	227	
2.050	2.223	2.813	168	2.223	2.875	198	2 223	2.938	228	
2.180	2.353	2.938	169	2 353	3.000	199	2.353	3 063	229	
2.300	2 473	3 063	170	2 473	3 125	200	2.473	3 188	230	
2.430	2 603	3.188	171	2.603	3.250	201	2 603	3.313	231	
2.550	2.723	3.313	172	2.723	3.375	202	2 723	3.438	232	
2.680	2 853	3.438	173	2 853	3 500	203	2 853	3 563	233	
2.800	2.973	3 563	174	2 973	3.625	204	2 973	3 688	234	
2.930	3 103	3.688	175	3 103	3.750	205	3 103	3.813	235	
3.050	3 223	3.813	176	3 223	3 875	206	3 223	3 938	236	
3.180	3.353	3.938	177	3.353	4 000	207	3.353	4 063	237	
3.300	3.473	4 063	178	3 473	4.125	208	3 473	4.188	238	
3.430	3.603	4 188	179	3.603	4 250	209	3 603	4.313	239	
3.550	3.723	4.313	180	3 723	4.375	210	3.723	4.438	240	
3.800	3.973	4.563	181	3.973	4.625	211	3.973	4 688	241	
4.050	4.223	4.813	182	4.223	4 875	212	4 223	4 938	242	
4 180	4.353	4 938	183	4 353	5.000	213	4 353	5 063	243	
4.300	4.473	5 063	184	4.473	5 125	214	4 473	5.188	244	
4.550	4.603	5 313	185	4.603	5 375	215	4.603	5.438	245	
6.050	6 223	6.812	186	6.223	6.875	216	6 223	6.938	246	

NOTE: For Material, Finish, etc ; see sheet 1.

This standard has been approved by the Department of the Army and is mandatory for use by that activity. All other military activities are required to comply with this standard where suitable.

P.A.	WC	TITLE	MILITARY STANDARD
Other Cust		PIN, STRAIGHT-HEADLESS; DRILLED FOR COTTER PINS	MS51932 (WC)
PROCUREMENT SPECIFICATION	SUPERSEDES	BPFX1, BPFX2, BPFX3, BPFX4	SHEET 3 OF
NONE			