

FED. SUP CLASS
5340

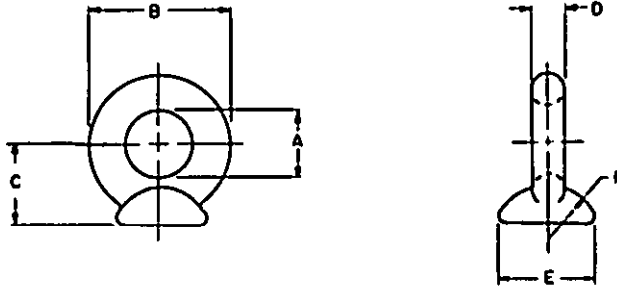


TABLE I

A EYE DIAMETER		.25	.38	.62
B WIDTH	REF	.62	.88	1.12
C HEIGHT (TO CENTER)	REF	.44	.59	.75
D THICKNESS	MIN	.19	.25	.25
E DIAMETER		.62	.88	1.00
F RADIUS (SHOULDER)	REF	.25	.31	.38
DASH NUMBER		1	7	3

NOTES:

1. MATERIAL: Carbon steel, drop forging AISI C1010-C1035.
2. FINISH: Uncoated.
3. DIMENSIONS: Dimensions are in inches.
4. TOLERANCE: $\pm .03$ unless otherwise specified.
5. PART NUMBER: The MS part number consists of the MS number, plus the dash number.
Example: MS51930-1.
6. Remove all burrs and sharp edges.
7. Reference documents shall be of the issue in effect on date of invitation for bid.
8. For design feature purposes, this standard takes precedence over procurement documents design referenced herein.
9. The illustration is for identification purposes only and is not intended to restrict design or shapes not dimensioned.

INTERCHANGEABILITY TABLE

The following Pad Eyes are cancelled after 5 APR 1968. For new design use only the dash numbers given in Table I. The cancelled pad eyes may be used until stock is depleted. For no replacement recommend the use of MS51930-7.

TABLE II

PART NUMBER	
CANCELLED	SUPERSEDED BY
MS51930-2	MS51930-7
4	MS51930-1
5	MS51930-7
6	MS51930-3

Ⓐ ENTIRE STANDARD REVISED

P.A. WC Other Cont YD 82	TITLE	MILITARY STANDARD
	PAD EYE, WELDING	MS 51930
PROCUREMENT SPECIFICATION None	SUPERSEDES EN312	SHEET 1 OF 1

This military standard has been approved by the Department of Defense and is mandatory for use by all Departments and Agencies of the Department of Defense. Selection for all new engineering and design applications and for repetitive use shall be made from this document.

REVISOR: BS, MI, YD, IS
USER: ME, MC, OS

APPROVED 4 APRIL 63 REVISED Ⓐ 6 APR 1968