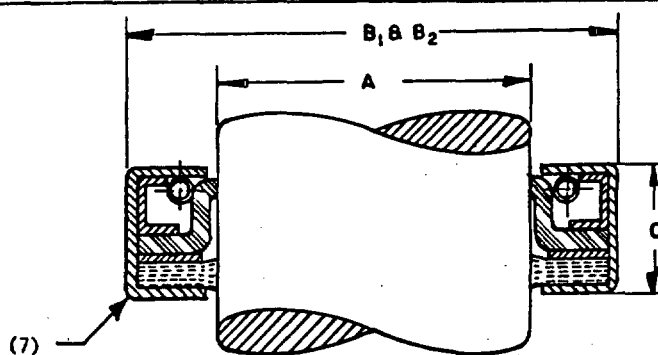


FED. SUP CLASS
5330

FIRST DASH NUMBER (SIZE)	A SHAFT DIA (NOM)	B ₁ SEAL O.D. (6)	B ₂ HOUSING BORE (REF)	C WIDTH (8)	FIRST DASH NUMBER (SIZE)	A SHAFT DIA (NOM)	B ₁ SEAL O.D. (6)	B ₂ HOUSING BORE (REF)	C WIDTH (8)
21	5/8	1.129	1.125	1/2	30	2-3/8	3.358	3.353	3/4
22	15/16	1.832	1.828	5/8	31	2-7/16	3.256	3.251	3/4
23	1-9/16	2.441	2.437	25/32	32	2-5/8	3.628	3.623	3/4
24	1-5/8	2.441	2.437	25/32	33	3	4.009	4.004	3/4
25	1-5/8	2.506	2.502	3/4	34	3	4.254	4.249	3/4
26	1-3/4	2.627	2.623	25/32	35	3-1/8	4.383	4.378	13/16
27	2	3.001	2.997	3/4	36	3-1/4	4.257	4.252	3/4
28	2-1/8	2.879	2.875	11/16	37	3-5/16	4.254	4.249	5/8
29	2-1/4	3.001	2.997	3/4	38	4	5.003	4.998	15/16

(C) REQUIREMENTS:

- THE ABOVE DESIGN IS FOR REFERENCE ONLY. OTHER DESIGNS WHICH MEET THE FUNCTIONAL REQUIREMENTS OF THIS TYPE OF SEAL ARE ACCEPTABLE.
- SEALING MEMBERS SHALL BE ONE FELT PLUS ONE MEMBER CONFORMING TO ONE OF THE FOLLOWING CLASSES:
 - CLASS 1: POLYMER-IMPREGNATED LEATHER OR CHROME RETANNED LEATHER IN ACCORDANCE WITH KK-L-164, TANNAGE III. LEATHER SEALING MEMBERS SHALL BE MOLD-PROOFED IN ACCORDANCE WITH O-L-164 (FOR NORMAL OPERATING TEMPERATURE).
 - CLASS 2: OIL RESISTANT SYNTHETIC ELASTOMER (FOR NORMAL OPERATING TEMPERATURE).
 - CLASS 3: OIL RESISTANT ELASTOMER IN ACCORDANCE WITH HIGH AND LOW TEMPERATURE TESTS OF MIL-S-45005 (FOR EXTREME OPERATING TEMPERATURE).
 FELT SEALING MEMBER SHALL BE TYPE I, CLASS 12R3, CONFORMING TO C-F-206.
- MARKING SHALL CONSIST OF THE MS NUMBER AND MANUFACTURER'S IDENTIFICATION IN ACCORDANCE WITH MIL-STD-130.
- THE PART NUMBER CONSISTS OF THE MS NUMBER AND 2 DASH NUMBERS.
 - FIRST DASH NUMBER INDICATES THE SIZE.
 - SECOND DASH NUMBER INDICATES THE CLASS.
 - EXAMPLE: MS51915-22-3 INDICATES SIZE NO. 22 WITH CLASS 3 SEALING MEMBER.

- (C) 5. FINISH SHALL BE IN ACCORDANCE WITH MIL-S-45005.
6. DIMENSIONS ARE IN INCHES. TOLERANCES ARE: + .002 FOR SEAL O.D. UP TO 4.000 AND + .003 - .002 FOR SEAL O.D. 4.001 AND OVER.
7. MAXIMUM HOUSING FILLET RADIUS .030 FOR SEALS UNDER 1-5/8 INCH O.D. AND .040 FOR SEALS OVER 1-5/8 INCH O.D.
- (C) 8. WIDTH TOLERANCES FOR SEALS SHALL BE MINUS . . . PLUS .015, FOR WIDTHS UP TO .500; MINUS .202, PLUS .015, FOR WIDTHS .501 TO .750; MINUS .265, PLUS .015, FOR WIDTHS .751 TO 1.000; MINUS .27X, PLUS .015, FOR WIDTHS OVER 1.000.

(C) NOTES:

- THIS STANDARD IS NOT INTENDED TO LIMIT CONSTRUCTION TO FEATURES OTHER THAN AS SHOWN HEREON BY DIMENSIONS, NOTATIONS OR REFERENCED DOCUMENTS.
- FOR DESIGN FEATURE PURPOSES, THIS STANDARD TAKES PRECEDENCE OVER PROCUREMENT DOCUMENTS REFERENCED HEREIN.
- REFERENCED DOCUMENTS SHALL BE OF THE ISSUE IN EFFECT ON DATE OF INVITATION FOR BIDS.
- THE USE OF RECYCLED MATERIALS WHICH MEET THE REQUIREMENTS OF THE APPLICABLE MATERIAL SPECIFICATION WITHOUT JEOPARDIZING THE INTENDED USE OF THE ITEM SHALL BE ENCOURAGED.

(C) DENOTES CHANGES

P.A. ARMY-AT Other Cust	TITLE SEAL, PLAIN ENCASED: ONE FELT, PLUS ONE LEATHER OR SYNTHETIC ELASTOMER SEALING MEMBER SPRING LOADED	MILITARY STANDARD MS 51915 (AT)
PROCUREMENT SPECIFICATION MIL-S-45005	SUPERSEDES: CLHXII	SHEET 1 OF 2

REVIEW ACTIVITY: ARMY-AR

This military standard is approved for use by the U.S. Army Tank-Automotive Material Readiness Command, Department of the Army, and is available for use by all Departments and Agencies of the Department of Defense.

APPROVED 14 SEPTEMBER 1961 REVISED (A) 29 DECEMBER 1967 (B) 20 JUNE 1972 (C) 9 JULY 1980

INTERCHANGEABILITY TABLE

THE FOLLOWING MS DASH NUMBERS ARE CANCELLED AFTER 29 DECEMBER 1967

THE CANCELLED SEALS SHOULD BE USED FOR MAINTENANCE PURPOSES
UNTIL EXISTING STOCK IS EXHAUSTED. USE ONLY THE SUPERSEDING
SEAL DASH NUMBERS FOR NEW DESIGN AND PROCUREMENT.

CANCELLED PART NUMBER - CLASS - SIZE	SUPERSEDING PART NUMBER - SIZE - CLASS	CANCELLED PART NUMBER - CLASS - SIZE	SUPERSEDING PART NUMBER - SIZE - CLASS
MS51915 - 1 - 1	MS51915 - 21 - 1	MS51915 - 2 - 1	MS51915 - 21 - 2
- 1 - 2	- 22 - 1	- 2 - 2	- 22 - 2
- 1 - 3	- 23 - 1	- 2 - 3	- 23 - 2
- 1 - 4	- 24 - 1	- 2 - 4	- 24 - 2
- 1 - 5	- 25 - 1	- 2 - 5	- 25 - 2
- 1 - 6	- 26 - 1	- 2 - 6	- 26 - 2
- 1 - 7	- 27 - 1	- 2 - 7	- 27 - 2
- 1 - 8	- 28 - 1	- 2 - 8	- 28 - 2
- 1 - 9	- 29 - 1	- 2 - 9	- 29 - 2
- 1 - 10	- 30 - 1	- 2 - 10	- 30 - 2
- 1 - 11	- 31 - 1	- 2 - 11	- 31 - 2
- 1 - 12	- 32 - 1	- 2 - 12	- 32 - 2
- 1 - 13	- 33 - 1	- 2 - 13	- 33 - 2
- 1 - 14	- 34 - 1	- 2 - 14	- 34 - 2
- 1 - 15	- 35 - 1	- 2 - 15	- 35 - 2
- 1 - 16	- 36 - 1	- 2 - 16	- 36 - 2
- 1 - 17	- 37 - 1	- 2 - 17	- 37 - 2
- 1 - 18	- 38 - 1	- 2 - 18	- 38 - 2

CANCELLED PART NUMBER - CLASS - SIZE	SUPERSEDING PART NUMBER - SIZE - CLASS
MS51915 - 3 - 1	MS51915 - 21 - 3
- 3 - 2	- 22 - 3
- 3 - 3	- 23 - 3
- 3 - 4	- 24 - 3
- 3 - 5	- 25 - 3
- 3 - 6	- 26 - 3
- 3 - 7	- 27 - 3
- 3 - 8	- 28 - 3
- 3 - 9	- 29 - 3
- 3 - 10	- 30 - 3
- 3 - 11	- 31 - 3
- 3 - 12	- 32 - 3
- 3 - 13	- 33 - 3
- 3 - 14	- 34 - 3
- 3 - 15	- 35 - 3
- 3 - 16	- 36 - 3
- 3 - 17	- 37 - 3
- 3 - 18	- 38 - 3

P.A. ARMY-AT Other Cust	TITLE SEAL, PLAIN ENCASED: ONE FELT, PLUS ONE LEATHER OR SYNTHETIC ELASTOMER SEALING MEMBER, SPRING LOADED	MILITARY STANDARD MS51915 (AT)
PROCUREMENT SPECIFICATION MIL-S-45005	SUPERSEDES: CLHXII	SHEET 2 OF 2