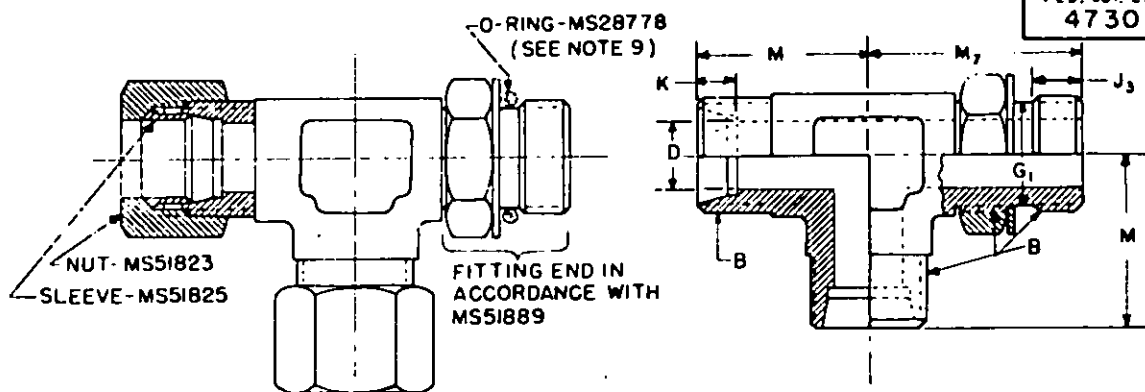


FED. SUP. CLASS  
4730

DASH NUMBER		TUBE	B	D	G <sub>1</sub>	J <sub>3</sub>	K	M	M <sub>7</sub>
ASSY	BODY	O. D.	STRAIGHT THREAD	DIAMETER	DIAMETER	FULL THREAD			
		NOM	CLASS 2A	DRILL	+0.002 -0.003	10.005	+0.015 -0.005	10.03	10.03
1	21	1/8	5/16-24UNF	0.091	0.250	0.234	0.188	0.77	0.91
2	22	3/16	3/8-24UNF	0.125	0.313	0.234	0.234	0.83	0.94
3	23	1/4	7/16-20UNF	0.203	0.364	0.281	0.234	0.89	1.03
4	24	5/16	1/2-20UNF	0.234	0.427	0.281	0.250	0.95	1.09
5	25	3/8	9/16-18UNF	0.281	0.482	0.312	0.250	1.05	1.25
6	26	1/2	3/4-16UNF	0.422	0.660	0.344	0.305	1.25	1.45
7	27	5/8	7/8-14UNF	0.500	0.773	0.391	0.350	1.42	1.70
8	28	3/4	1-1/16-12UN	0.656	0.945	0.469	0.350	1.58	1.94
9	29	7/8	1-3/16-12UN	0.718	1.070	0.469	0.350	1.62	2.00
10	30	1	1-5/16-12UN	0.875	1.195	0.469	0.415	1.73	2.05
11	31	1-1/4	1-5/8-12UN	1.093	1.507	0.469	0.415	1.89	2.25
12	32	1-1/2	1-7/8-12UN	1.344	1.756	0.469	0.485	2.02	2.39
13	33	2	2-1/2-12UN	1.813	2.381	0.469	0.485	2.45	2.89

## NOTES:

- MATERIAL:** Steel, carbon in accordance with procurement specification.
- PROTECTIVE COATING:** Steel, corrosion-resisting in accordance with procurement specification.  
Cadmium plated in accordance with procurement specification.  
Zinc plated in accordance with procurement specification.  
Phosphate coating in accordance with procurement specification.  
Passivation treatment in accordance with procurement specification.
- DIMENSIONS AND TOLERANCES:** Dimensions and tolerances not shown shall be in accordance with SAE Standard for Flareless Tube Fittings (SAE J514).
- THREADS:** Threads shall be in accordance with Screw-Thread Standards for Federal Services, FED-STD-H23.
- PART NUMBER:** The MS part number consists of the MS number, plus the dash number and (for complete assembly) the applicable MS51825 sleeve style designator.  
A. For complete assembly (with nuts and sleeves), cadmium plated, use the MS number, plus the assembly dash number and the sleeve style designator. Example: MS51892-1A or MS51892-1B.  
B. For body only, cadmium plated, use the MS number and the body dash number. Example: MS51892-21.  
C. For zinc coating add "Z" and (for complete assembly) the sleeve style designator to the dash number. Example: MS51892-1ZA or MS51892-1ZB or MS51892-21Z.  
D. For phosphate coating add "P" and (for complete assembly) the sleeve style designator to the dash number. Example: MS51892-1PA or MS51892-1PB or MS51892-21P.  
E. For corrosion-resisting steel add "SS" and (for complete assembly) the sleeve style designator to the dash number. Example: MS51892-1SSA or MS51892-1SSB or MS51892-21SS.
- For design feature purposes, this standard takes precedence over procurement documents referenced herein.
- Reference documents shall be of the issue in effect on date of invitations for bid.
- The illustration is for identification and is not intended to restrict designs or shapes not dimensioned.
- Secure the O-Ring separately and install immediately before installation of the fitting.
- The bodies will be used for production only and shall not be stocked for maintenance.

A

A Denotes change

P.A. Other Cust.	AR SH 99	TITLE TEE, TUBE TO BOSS, BOSS ON RUN, O-RING, FLARELESS TYPE, HYDRAULIC	MILITARY STANDARD MS51892
PROCUREMENT SPECIFICATION MIL-F-18866	SUPERSEDES	SHEET 1 OF 1	

DISTRIBUTION STATEMENT A. Approved for public release; distribution is unlimited.  
This military standard is approved for use by all Departments and Agencies of the Department of Defense. Selection for all new engineering and design applications and for repetitive use shall be made from this document.

Review Activities:  
Army - AT, ME  
Air Force - B2  
DLA - CS

User Activities:  
Navy - OS, MC