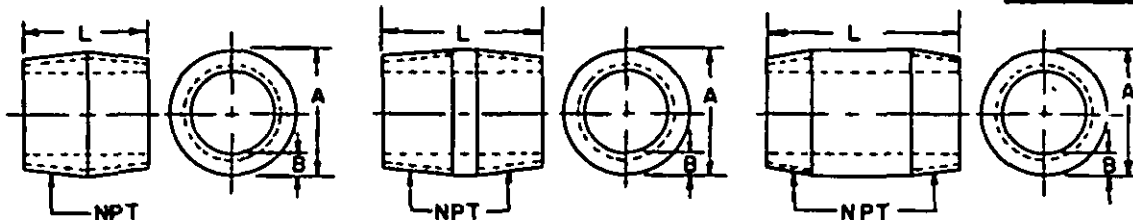


FED. SUP CLASS
4730

* CLOSE TYPE

▲ SHORT TYPE

LONG TYPE

NOMINAL PIPE SIZE	1/8	1/4	3/8	1/2	3/4	1	1-1/4	1-1/2	2	2-1/2	3	4	5	6
A OUTSIDE DIA.	.405	.540	.675	.840	1.050	1.315	1.660	1.900	2.375	2.875	3.500	4.500	5.563	6.625
B THICKNESS	.095	.119	.126	.147	.154	.179	.191	.200	.218	.276	.300	.337	.375	.432
L LENGTH ± 1/16	DASH NUMBERS													
3/4 7/8	*1	*25												
1 1-1/8 1-3/8			*49	*73										
1-1/2 1-5/8 1-3/4	▲ 6	▲ 29	▲ 52	▲ 75		*121	*145	*169						
2 2-1/2	9 10	32 33	55 56	78 79	▲ 101 102	▲ 124 125	▲ 148	▲ 171	▲ 193 194	*217				
3 3-1/2 4 4-1/2 5	11 12 13 14 15	34 35 36 37 38	57 58 59 60 61	80 81 82 83 84	103 104 105 106 107	126 127 128 129 130	149 150 151 152 153	172 173 174 175 176	195 196 197 198 199	▲ 218 219 220 221 222	▲ 241 242 243 244 245		▲ 290	▲ 313
5-1/2 6 7 8 9	16 17 18 19 20	39 40 41 42 43	62 63 64 65 66	85 86 87 88 89	108 109 110 111 112	131 132 133 134 135	154 155 156 157 158	177 178 179 180 181	200 201 202 203 204	223 224 225 226 227	246 247 248 249 250	270		316
10 11 12	21 22 23	44 45 46	67 68 69	90 91 92	113 114 115	136 137 138	159 160 161	182 183 184	205 206 207	228 229 230	251 252 253			

NOTES:

- MATERIAL:** Steel shall be in accordance with procurement specification.
- PROTECTIVE COATING:** Black or zinc coating in accordance with procurement specification.
- THREADS:** Nipples shall be threaded with American Standard Taper Pipe Threads (NPT) in accordance with Screw-Thread Standard for Federal Services, FED-STD-R28. (A)
- DIMENSIONS:** All dimensions are in inches unless otherwise specified.
- PART NUMBER:** The MS part number consists of the MS number plus the dash number.
A. For nipples, zinc coated, use the MS number plus the dash number.
Example: MS51873-1.
B. For nipples, black coated, add (B) to the dash number. Example: MS51873-1B.
- For design feature purposes, this standard takes precedence over procurement documents referenced herein.
- Reference documents shall be of the issue in effect on date of invitations for bid.
- * These nipples are close type } All others are long type.
- ▲ These nipples are short type }
- For nipple, pipe, standard, steel see MS51953.

(A) Denotes changes

P.A. Other Code	AR 11	TITLE NIPPLE, PIPE, EXTRA STRONG STEEL	MILITARY STANDARD MS51873
PROCUREMENT SPECIFICATION (A) ARTH A 733	SUPERSEDES: CPXK1.2, CPXK1.3	SHEET 1 OF 1	

User Activities: Army - AR, GM, ME, MI
 Navy - NC
 Review Activity: Air Force - 99
 This military standard is approved for use by all Departments and Agencies of the Department of Defense. Selection for all new engineering and design applications and for repetitive use shall be made from this document, when applicable.

APPROVED 12 DEC 72 REVISED (A) 6 Dec 82