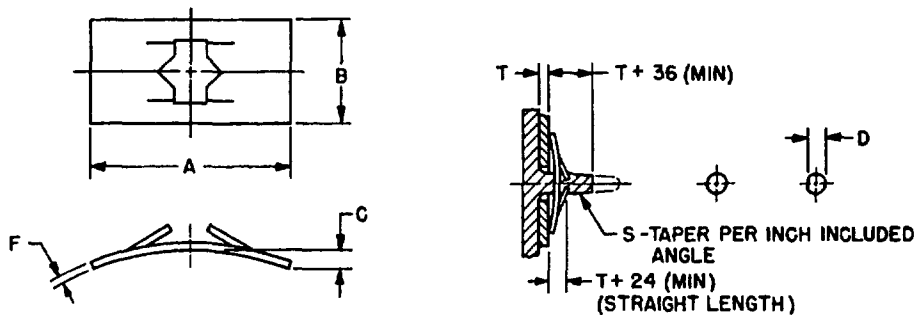


FED SUP CLASS
5310

RECOMMENDED STUD DESIGN

DASH NO.	NOM STUD SIZE	SERIES	A LENGTH ±.01	B WIDTH ±.01	C ARCH HEIGHT		F THICKNESS	D STUD WIDTH		S TAPER MAX
					MAX	MIN		MAX	MIN	
1	1/8	LIGHT	.58	.31	.040	.010	.012	.105	.095	.052
2		MEDIUM					.014			
3		HEAVY					.017			
4	3/16	LIGHT	.62	.38	.060	.030	.012	.155	.145	.040
5		MEDIUM					.017			
6		HEAVY					.020			
7	1/4	LIGHT	.62	.44	.050	.020	.012	.205	.195	.040
8		MEDIUM					.017			
9		HEAVY					.020			
10	5/16	LIGHT	.69	.50	.060	.030	.014	.255	.245	.033
11		MEDIUM					.020			
12	3/8	LIGHT	.75	.56	.060	.030	.014	.305	.295	.033
13		MEDIUM					.020			

NOTES:

- MATERIAL** Spring steel, SAE 1050 in accordance with Fed. Std. No. 66, heat treated to a hardness of Rockwell C44-50.
- PROTECTIVE COATING:** Cadmium plated in accordance with QQ-P-416, Type II, Class 3.
- DIMENSIONS:** All dimensions are in inches.
- PART NUMBER** The MS part number consists of the MS number, plus the dash number.
Example: MS51857-1.
- Nuts shall be free of cracks, burrs, loose scale or other defects.
- Light series nuts are for use on plastic studs; Medium series on soft metal studs and Heavy series on hardened studs.
- Heavy series nuts shall be used on round studs only. Round studs are used for permanent assemblies and "D" shaped studs are used when nuts may have to be removed.
- For design feature purposes, this standard takes precedence over procurement documents referenced herein.
- Referenced documents shall be of the issue in effect on date of invitations for bid.

This military standard is mandatory for use by all Departments and Agencies of the Department of Defense. Selection for all new engineering and design applications and for repetitive use shall be made from this document.

APPROVED 19 FEB 1969 REVISED

P A WC Other Cost OS	TITLE NUT, PUSH-ON, STEEL	MILITARY STANDARD
PROCUREMENT SPECIFICATION NONE	SUPERSEDES	MS51857
		SHEET 1 OF 1