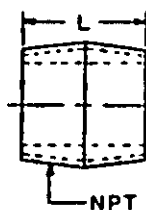
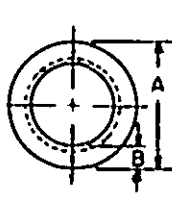
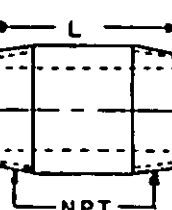
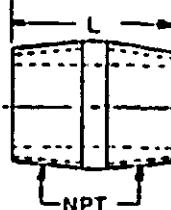


FED. SUP CLASS
4730

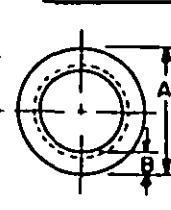
* CLOSE TYPE



▲ SHORT TYPE



LONG TYPE



NOMINAL PIPE SIZE	1/8	1/4	3/8	1/2	3/4	1	1-1/4	1-1/2	2	2-1/2	3
A OUTSIDE DIAMETER	.405	.540	.675	.840	1.050	1.315	1.660	1.900	2.375	2.875	3.500
B THICKNESS	.062	.083	.090	.107	.114	.126	.146	.150	.156	.187	.219
1. LENGTH ±1/16	DASH NUMBERS										
3/4	*1	*20	*39	*58	*77	*96	*115	*134	*152	*172	*191
7/8											
1											
1-1/8											
1-3/8											
1-1/2	▲ 6	▲ 24	▲ 42	▲ 60							
1-5/8											
1-3/4											
2	9	27	45	63	▲ 81	▲ 99	▲ 118	▲ 136	▲ 154		
2-1/2	10	28	46	64	82	100					
2-5/8											
3	12	30	48	66	84	102	120	138	156	▲ 174	▲ 192
3-1/2	13	31	49	67	85	103	121	139	157	175	193
4	14	32	50	68	86	104	122	140	158	176	194
4-1/2	15	33	51	69	87	105	123	141	159	177	195
5	16	34	52	70	88	106	124	142	160	178	196
5-1/2	17	35	53	71	89	107	125	143	161	179	197
6	18	36	54	72	90	108	126	144	162	180	198

NOTES:

- MATERIAL:** Brass or copper shall be in accordance with procurement specification.
- PROTECTIVE COATING:** None.
- THREADS:** Nipples shall be threaded with American Standard Taper Pipe Threads (NPT) in accordance with Screw-Thread Standard for Federal Services, FED-STD-H28.
- DIMENSIONS:** All dimensions are in inches unless otherwise specified.
- PART NUMBER:** The MS part number consists of the MS number, plus the dash number.
A. For nipples, brass, use the MS number, plus the dash number.
Example: MS51846-1
B. For nipples, copper, add (C) to the dash number. Example: MS51846-1C
- For design feature purposes, this standard takes precedence over procurement documents referenced herein.
- Reference documents shall be of the issue in effect on date of invitations for bid.
- * These nipples are close type.
- ▲ These nipples are short type.
- All others are long type.
- For nipple, pipe, extra strong, brass or copper, see MS51872.

(B) Denotes changes

P.A. AR Other Case 11	TITLE NIPPLE, PIPE, STANDARD, BRASS OR COPPER	MILITARY STANDARD MS51846
PROCUREMENT SPECIFICATION ABTN B 687	SUPERSEDES: CPHX2	SHEET 1 OF 1

DD FORM 672-1 (Continued)

PREVIOUS EDITIONS OF THIS FORM ARE OBSOLETE

4730-0455

User Activities:
Army - AT, CM, MC, MI
Navy - NCReview Activity:
Air Force - 99

This military standard is approved for use by all Departments and Agencies of the Department of Defense. Selection for all new engineering and design applications and for repetitive use shall be made from this document, when applicable.

APPROVED 22 NOV 1967 REVISED 12 DEC 72 (B) 6 Dec 82