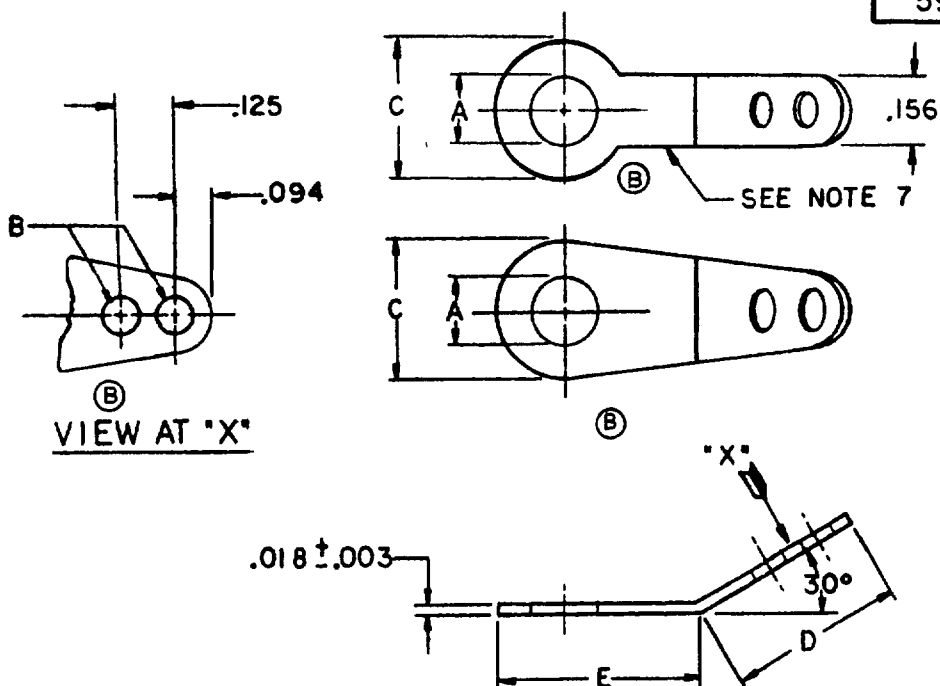


FED SUP CLASS
5940USER ACTIVITIES:
NAVY - AS, MC
AIR FORCE - 11

DASH NO	WIRE SIZE AWG NOM	STUD SIZE	HOLE DIA		B DIA	C DIA	D	E
			MIN	MAX				
1	12	2	.090	.096	.094	.312	.331	.406
2		4	.115	.127				
3		6	.141	.153				
4		8	.167	.179				
5		10	.193	.205				
6		.250	.253	.257		.375	.343	.469

MATERIAL Copper, annealed - specification QQ-C-576.

FINISH. Hot tin dip or electrodeposited tin all over, minimum thickness .0005 inches.

NOTES:

- Dimensions are in inches.
- Unless otherwise specified, tolerance is $\pm .015$.
- Remove all burrs.
- The MS part number consists of the MS number plus the dash number.
- In the event of a conflict between the text of this standard and the references cited herein, the text of this standard shall take precedence.
- Referenced Government (or nongovernment) documents of the issue listed in that issue of the Department of Defense Index of Specifications and Standards (DoDISS) specified in the solicitation form a part of this standard to the extent specified herein.
- Dash No 6 shall conform to this design.

(B) DENOTES CHANGES

P. A.	AR	INTERNATIONAL INTEREST	TITLE	MILITARY STANDARD
Other Cost	85		TERMINAL LUG, SOLDER TYPE, COPPER STAMPING, TWO HOLE, 30°	MS 51535
PROCUREMENT SPECIFICATION MIL - T - 15659	SUPERSEDES:		PAGE	1 OF 1