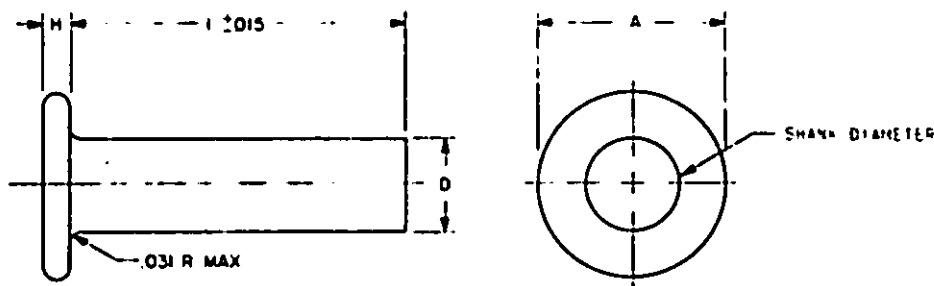


FED SUP CLASS  
5320User activities:  
Army - AR, MC  
Navy - NC, OSReview activities:  
Army - AR, W  
Navy - NC, OS  
NDA - NS

| Size       | 3/32<br>(.094)       | 1/8<br>(.125) | 3/16<br>(.188) | 1/4<br>(.250) | 5/16<br>(.313) | 3/8<br>(.375) |
|------------|----------------------|---------------|----------------|---------------|----------------|---------------|
| D Body dia | max .096<br>min .090 | .127<br>.121  | .191<br>.182   | .253<br>.244  | .317<br>.303   | .380<br>.365  |
| A Head dia | max .200<br>min .180 | .260<br>.240  | .387<br>.361   | .515<br>.485  | .641<br>.607   | .769<br>.731  |
| H Head hgt | max .038<br>min .026 | .048<br>.036  | .069<br>.055   | .091<br>.075  | .113<br>.095   | .135<br>.115  |
| L Length   | Dash numbers         |               |                |               |                |               |
| .125       | - 1                  | - 16          |                |               |                |               |
| .187       | - 2                  | - 17          | - 31           |               |                |               |
| .250       | - 3                  | - 18          | - 32           | - 45          |                |               |
| .312       | - 4                  | - 19          | - 33           | - 46          | - 58           |               |
| .375       | - 5                  | - 20          | - 34           | - 47          | - 59           | - 70          |
| .437       | - 6                  | - 21          | - 35           | - 48          | - 60           | - 71          |
| .500       | - 7                  | - 22          | - 36           | - 49          | - 61           | - 72          |
| .562       | - 8                  | - 23          | - 37           | - 50          | - 62           | - 73          |
| .625       | - 9                  | - 24          | - 38           | - 51          | - 63           | - 74          |
| .687       | - 10                 | - 25          | - 39           | - 52          | - 64           | - 75          |
| .750       | - 11                 | - 26          | - 40           | - 53          | - 65           | - 76          |
| .812       | - 12                 | - 27          | - 41           | - 54          | - 66           | - 77          |
| .875       | - 13                 | - 28          | - 42           | - 55          | - 67           | - 78          |
| .937       | - 14                 | - 29          | - 43           | - 56          | - 68           | - 79          |
| 1.000      | - 15                 | - 30          | - 44           | - 57          | - 69           | - 80          |

## REQUIREMENTS:

1. Material: Steel carbon per FED-S10-68; Composition 1006 thru 1012 annealed.
2. Protective coating: Uncoated, or lined per procurement specification.
3. Hardness: Maximum Rockwell hardness shall conform to procurement specification.

## NOTES:

1. Dimensions: Unless otherwise specified, all dimensions are in inches.
2. Part number: The MS part number consists of the MS number plus the dash number and a "T" if tin coating is desired.  
Example:  
MS1401-14T is .094 dia, .937 long and tin coated.
3. For design feature purposes, this standard takes precedence over procurement documents referenced herein.
4. Referenced documents shall be of the issue in effect on date of invitations for bids, or request for proposal, except that referenced adopted industry documents shall give the date of the issue adopted.

This military standard is approved for use by all Departments and Agencies of the Department of Defense. Selection for all new engineering and design applications and for repetitive use shall be made from this document when applicable.

|  |                                       |                                     |
|--|---------------------------------------|-------------------------------------|
| P.A. AR<br>Other Com 99                      | TITLE<br><b>RIVET, SOLID, TINNERS</b> | MILITARY STANDARD<br><b>MS5140I</b> |
| PROCUREMENT SPECIFICATION<br><b>FF-R-556</b> | SUPERSEDES                            | SHEET 1 OF 1                        |

DD FORM 672-1 (limited circulation)

PREVIOUS EDITIONS OF THIS FORM ARE OBSOLETE

5320-0400