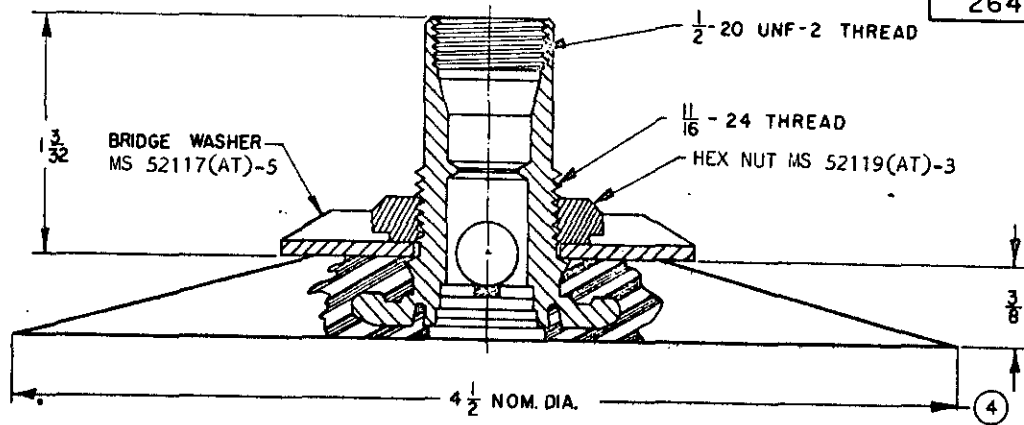
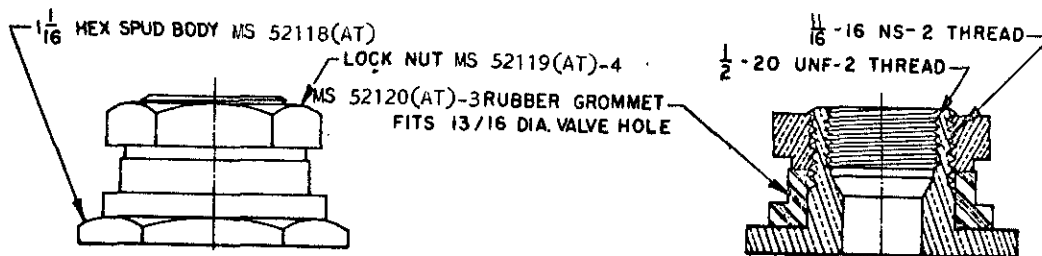


FED. SUP CLASS  
2640

TYPE III, CLASS 1 - SPUD, VALVE, INNER TUBE, OF PROCUREMENT SPECIFICATION  
MS 51374-1



TYPE III, CLASS 2 - SPUD, VALVE, TUBELESS, OF PROCUREMENT SPECIFICATION  
MS 51374-2

## NOTES:

1. MAY BE USED FOR REPLACEMENT OF SPUDS OF CORRESPONDING DESIGN OR AS ORIGINAL EQUIPMENT ON NEW TUBES AND TIRES.
2. FOR PROCUREMENT OF NEW INNER TUBES OR TIRES, THESE SPUDS ARE PART OF THE COMPLETE VALVE ASSEMBLY THAT IS COMPOSED OF SPUD, VALVE STEM, MS51378 VALVE CORE AND MS51376 CAP.
3. COMPLETE VALVE ASSEMBLIES UTILIZING SPUD MS51374-2 ARE SHOWN ON MS51370-1 AND MS51371-1.
4. BASE CONFIGURATION OPTIONAL FOR -1 VALVE, PROVIDED CIRCULAR BASE AREA AT VALVE AXIS IS 4-1/2 NOMINAL DIAMETER.
5. DIMENSIONS SHOWN ARE IN INCHES.
6. THIS STANDARD IS NOT INTENDED TO LIMIT CONSTRUCTION TO FEATURES OTHER THAN SHOWN HEREON BY DIMENSIONS, NOTATIONS, AND REFERENCED DOCUMENTS.
7. FOR DESIGN FEATURE PURPOSES, THIS STANDARD TAKES PRECEDENCE OVER PROCUREMENT DOCUMENTS REFERENCED HEREIN.
8. REFERENCED DOCUMENTS SHALL BE OF THE ISSUE IN EFFECT ON DATE OF INVITATION FOR BID.
9. MARKING SHALL CONSIST OF THE MS PART NUMBER AND MANUFACTURER'S IDENTIFICATION, IN ACCORDANCE WITH MIL-STD-130.

Ⓢ CANCELLED AFTER 21 NOVEMBER 1975

FOR NEW DESIGN AND PROCUREMENT USE TIRE AND RIM ASSOCIATION STANDARDS YEAR BOOK AS SPECIFIED IN ZZ-V-25

P.A. ARMY-AT	TITLE	MILITARY STANDARD
Other Cust NAVY- YD AF- 84	SPUD, VALVE, PNEUMATIC TIRE: LARGE BORE, STRAIGHT, VEHICULAR (INNER TUBE TYPE AND TUBELESS TYPE)	MS 51374
PROCUREMENT SPECIFICATION ZZ-V- 25	SUPERSEDES:	SHEET   OF

DD FORM 672-1 (COORDINATED)

PREVIOUS EDITIONS OF THIS FORM ARE OBSOLETE.

2640-0149

This military standard is mandatory for use by all Departments and Agencies of the Department of Defense. Selection for all new engineering and design applications and for repetitive use shall be made from this document.

APPROVED 23 MARCH, 1961 REVISED (A) 28 JUNE, 1963 (B) 12 APRIL 1967 (C) 7 SEPTEMBER 1971 (D) 21 NOVEMBER 1975

USER ACTIVITIES: ARMY- ME, MI