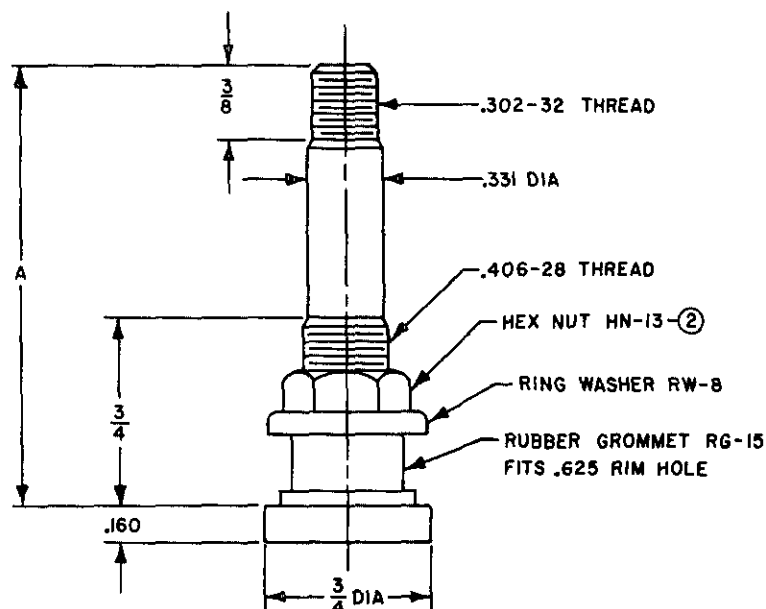


USER ACTIVITIES: ARMY-MI, ME

FED. SUP CLASS  
2640

AFTER 15 JAN. 1976

TYPE II, CLASS 2 - (FOR DROP-CENTER RIMS SIDE-OF-WELL,  
VALVE-HOLE LOCATION) OF PROCUREMENT SPECIFICATION

MS PART NO.	TR IDENT NO.	DIM A
MS 51368 -1	TR-500	2
MS 51368 -2	TR-501	1-1/2
MS 51368 -3	TR-570	3-1/8
MS 51368 -4	TR-571	3-3/8
MS 51368 -5	TR-572	3-3/4
MS 51368 -6	TR-573	4-3/8
MS 51368 -7	TR-575	1-1/8

TR DENOTES TIRE AND RIM ASSOCIATION

## NOTES:

1. VALVE CORE, MS51377 AND VALVE CAP, MS51375 ARE INCLUDED AS PART OF THIS ASSEMBLY.
2. FITTING PART NUMBER DESIGNATIONS REFER TO TR IDENTIFICATION.
3. DIMENSIONS SHOWN ARE IN INCHES.
4. THIS STANDARD IS NOT INTENDED TO LIMIT CONSTRUCTION TO FEATURES OTHER THAN AS SHOWN HEREON BY DIMENSIONS, NOTATIONS AND REFERENCED DOCUMENTS.
5. FOR DESIGN FEATURE PURPOSES, THIS STANDARD TAKES PRECEDENCE OVER PROCUREMENT DOCUMENTS REFERENCED HEREIN.
6. REFERENCED DOCUMENTS SHALL BE OF THE ISSUE IN EFFECT ON DATE OF INVITATIONS FOR BID.
7. MARKING SHALL CONSIST OF THE MS PART NUMBER, T & R IDENTIFICATION NUMBER, AND MANUFACTURER'S IDENTIFICATION, IN ACCORDANCE WITH MIL-STD-130 OR MIL-STD-129.

© CANCELLED

FOR NEW DESIGN AND PROCUREMENT USE TIRE AND RIM ASSOCIATION STANDARD YEARBOOK PER ZZ-V-25

APPROVED 23 MARCH 1961 REVISED (A) 28 JUNE 1963 (B) 12 APRIL 1967 (C) 15 JAN. 1976

P.A. ARMY-AT Other Cust NAVY - YD AF-84	TITLE VALVE, PNEUMATIC TIRE: TUBELESS, CLAMP-IN, TRUCK, STD. BORE, STRAIGHT, VEHICULAR	MILITARY STANDARD <b>MS51368</b>
PROCUREMENT SPECIFICATION ZZ-V-25	SUPERSEDES:	SHEET 1 OF 1