

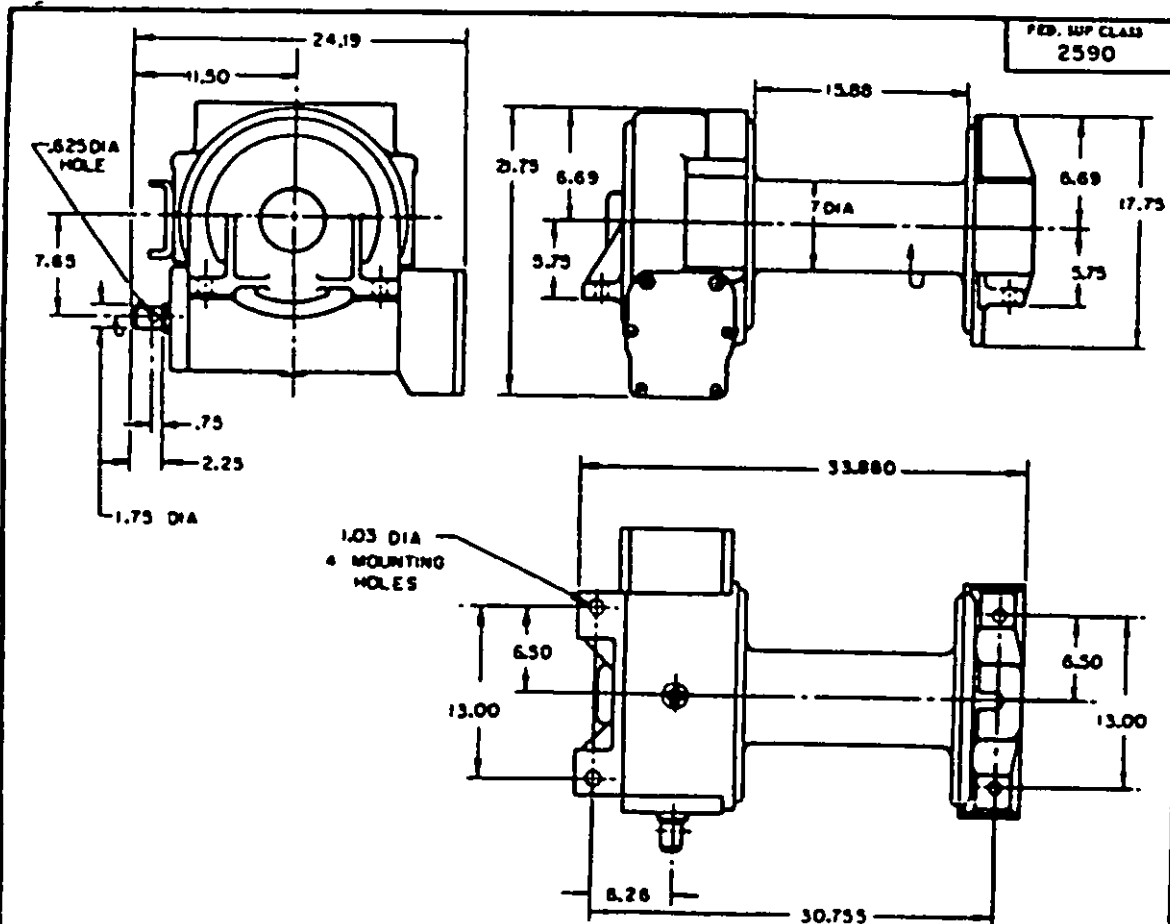
REMOVED ACTIVITIES

REMOVED ACTIVITIES

This military standard is approved for use by the US Army Tank-Automotive Command, Department of the Army, and is available for use by all Departments and Agencies of the Department of Defense.

DISTRIBUTION STATEMENT A: Approved for public release; distribution is unlimited.

APAC R/A



## NOTES:

1. THIS WINCH SHALL CONFORM TO TYPE 11, CLASS 3 OF MIL-W-46735.
2. ENGINEERING DATA BASED ON WINDING SPEED OF 15 FEET PER MINUTE ON BARE DRUM, RATED LOAD, AND ASSUMED 50% EFFICIENCY:
 

RPM-INPUT SHAFT	222
TORQUE-INPUT SHAFT	11620
GEAR RATIO	30 TO 1
CABLE SIZE	3/4 INCH
CABLE LENGTH	300 FEET
WEIGHT	495 POUNDS
3. DIMENSIONS SHOWN ARE IN INCHES AND ARE FOR ENGINEERING REFERENCE ONLY.
4. FOR DESIGN FEATURE PURPOSES, THIS STANDARD TAKES PRECEDENCE OVER PROCUREMENT DOCUMENTS REFERENCED HEREIN.
5. THIS STANDARD IS NOT INTENDED TO LIMIT CONSTRUCTION TO FEATURES OTHER THAN AS SHOWN HEREON BY DIMENSIONS, NOTATIONS, AND REFERENCED DOCUMENTS.
6. REFERENCED DOCUMENTS SHALL BE OF THE ISSUE IN EFFECT ON DATE OF INVITATION FOR BID.
7. MARKING SHALL CONSIST OF THE MS PART NUMBER AND THE MANUFACTURER'S IDENTIFICATION IN ACCORDANCE WITH MIL-STD-130.
8. DETAILS OF THIS ASSEMBLY SHALL BE IN ACCORDANCE WITH REFERENCED DRAWING, COPIES OF WHICH MAY BE OBTAINED FROM U. S. ARMY TANK-AUTOMOTIVE COMMAND, WARREN, MICHIGAN 48090.

Ⓢ DEOTES CHANGE

MS PART NO	REF DWG NO
MS 51354-1	7954590

P. A. ARMY-AT	INTERNATIONAL INTEREST	TITLE	MS PART NO	REF DWG NO
Other Com		WINCH, DRUM, VEHICLE MOUNTING: BASIC, MECHANICALLY DRIVEN, 45000 LB. CAPACITY	MS 51354-1	7954590
PROCUREMENT SPECIFICATION	SUPERSEDES		MILITARY STANDARD MS51354(AT)	
Ⓢ			SHEET	OF