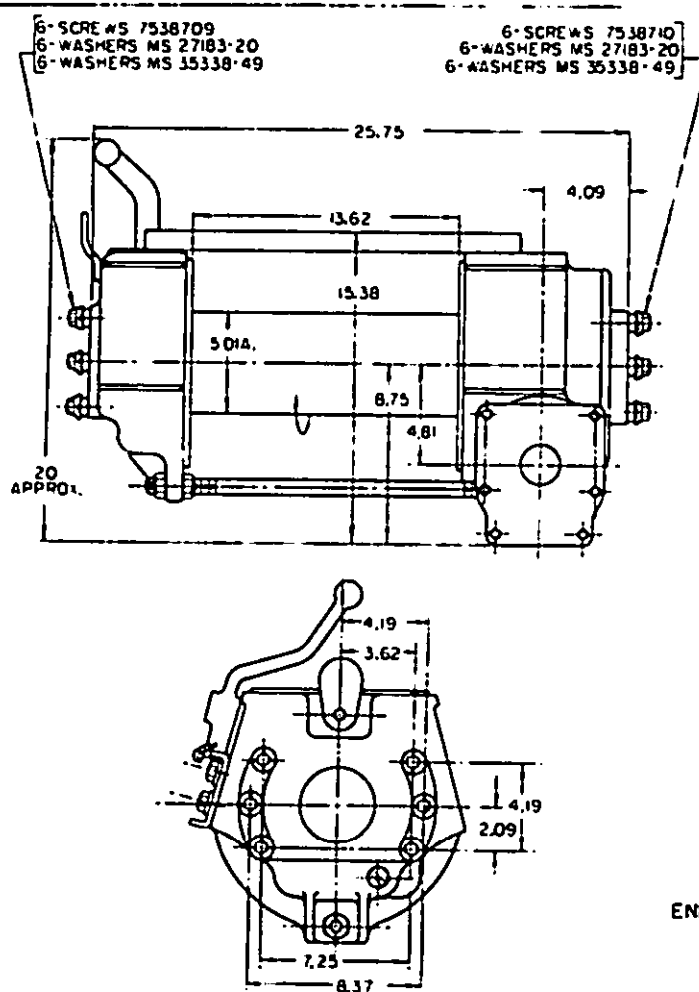


USER ACTIVITY: ARMY-ME



ENLARGED VIEW B

NOTES:

1. ENGINEERING DATA BASED ON WINDING SPEED OF 15 FEET PER MINUTE ON BARE DRUM, RATED LOAD, AND ASSUMED 50% EFFICIENCY:

RPM INPUT SHAFT	240
TORQUE INPUT SHAFT	1,793 INCH POUNDS
GEAR RATIO	23 TO 1
CABLE SIZE	1/2 INCH
CABLE LENGTH	300 FEET
WEIGHT	200 POUNDS

2. THIS WINCH SHALL CONFORM TO TYPE 11, CLASS 3 OF MIL-W-46735.
3. DIMENSIONS SHOWN ARE IN INCHES AND ARE FOR ENGINEERING REFERENCE ONLY.
4. REFERENCED DOCUMENTS SHALL BE OF THE ISSUE IN EFFECT ON DATE OF INVITATION FOR BID.
5. FOR DESIGN FEATURE PURPOSES, THIS STANDARD TAKES PRECEDENCE OVER PROCUREMENT DOCUMENTS REFERENCED HEREIN.
6. MARKING SHALL CONSIST OF THE MS PART NUMBER AND THE MANUFACTURER'S IDENTIFICATION IN ACCORDANCE WITH MIL-STD-130.
7. DETAILS OF THIS ASSEMBLY SHALL BE IN ACCORDANCE WITH REFERENCED DRAWING WHICH MAY BE OBTAINED FROM U. S. ARMY TANK-AUTOMOTIVE COMMAND, WARREN, MICHIGAN 48090.

(A) ENTIRE STANDARD REVISED

ARMY-AT

WLF

WINCH, DRUM, VEHICLE MOUNTING: BASIC,
MECHANICALLY DRIVEN, 10,000 LB. CAPACITY

MIL-W-46735

MS PART NO	REF EAG NO
MS 51352-1	7538687

MILITARY STANDARD

MS 51352 (AT)

SHEET 1 OF 1

DD FORM 672-1

This standard has been approved by the U. S. Army Tank-Automotive Command, Department of the Army, and is mandatory for use by that activity. All other military activities are required to employ this standard where suitable.