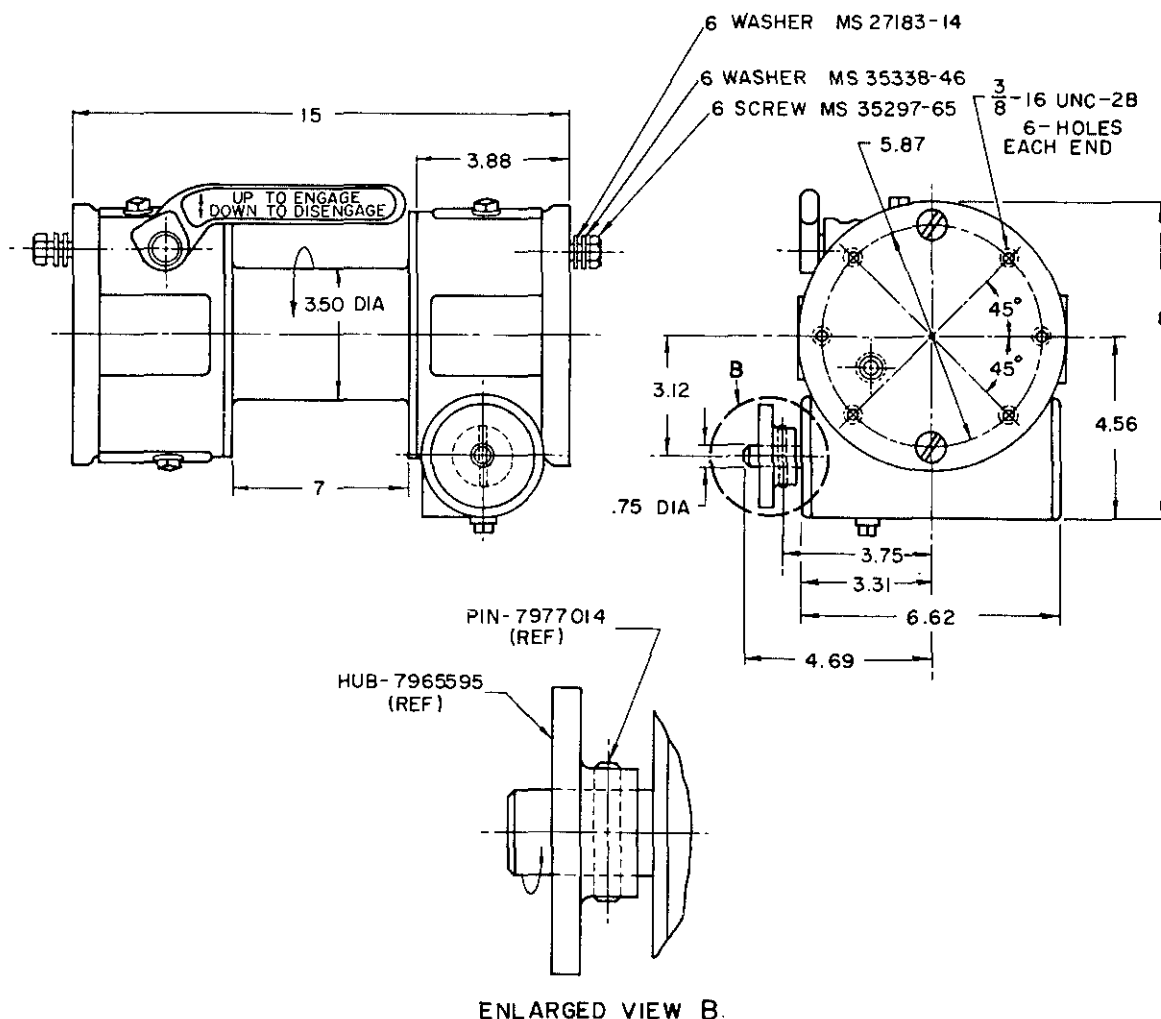


FED. SUP CLASS
2590

NOTES:

- ENGINEERING DATA BASED ON WINDING SPEED OF 15 FEET PER MINUTE ON BARE DRUM, RATED LOAD, AND ASSUMED 50% EFFICIENCY:

RPM-INPUT SHAFT	739
TORQUE-INPUT SHAFT	290 INCH POUNDS
GEAR RATIO	50 TO 1
CABLE SIZE	3/8 INCH
CABLE LENGTH	100 FEET
WEIGHT	85 POUNDS

- THIS WINCH SHALL CONFORM TO TYPE II, CLASS 3 OF MIL-W-46735.
- DIMENSIONS SHOWN ARE IN INCHES AND ARE FOR ENGINEERING REFERENCE ONLY.
- REFERENCED DOCUMENTS SHALL BE OF THE ISSUE IN EFFECT ON DATE OF INVITATION FOR BID.
- FOR DESIGN FEATURE PURPOSES, THIS STANDARD TAKES PRECEDENCE OVER PROCUREMENT DOCUMENTS REFERENCED HEREIN.
- MARKING SHALL CONSIST OF THE MS PART NUMBER ACCORDANCE WITH...

**(B) CANCELLED AFTER 29 OCTOBER 1982.
NO SUPERSEDING STANDARD.**

MS PART NO.	REF. DWG NO.
MS 51351-1	7980420

P.A. ARMY-AT Other Cust	TITLE WINCH, DRUM, VEHICLE MOUNTING: BASIC, END MOUNT, MECHANICALLY DRIVEN, 5000 LB. CAP.	MILITARY STANDARD MS 51351 (AT)
PROCUREMENT SPECIFICATION MIL-W-46735	SUPERSEDES.	SHEET 1 OF 2

DD FORM 672-1 (Limited coordination)

PREVIOUS EDITIONS OF THIS FORM ARE OBSOLETE

2590-N/A

* U.S. GOVERNMENT PRINTING OFFICE: 1982-605-034-341

USER ACTIVITY: ARMY-ME

This standard has been approved by the U. S. Army Tank-Automotive Command, Department of the Army, and is mandatory for use by that activity. All other military activities are required to employ this standard where suitable.

APPROVED 27 JAN 1961 REVISED (A) 11 NOVEMBER 1965 (B) 29 OCT 82