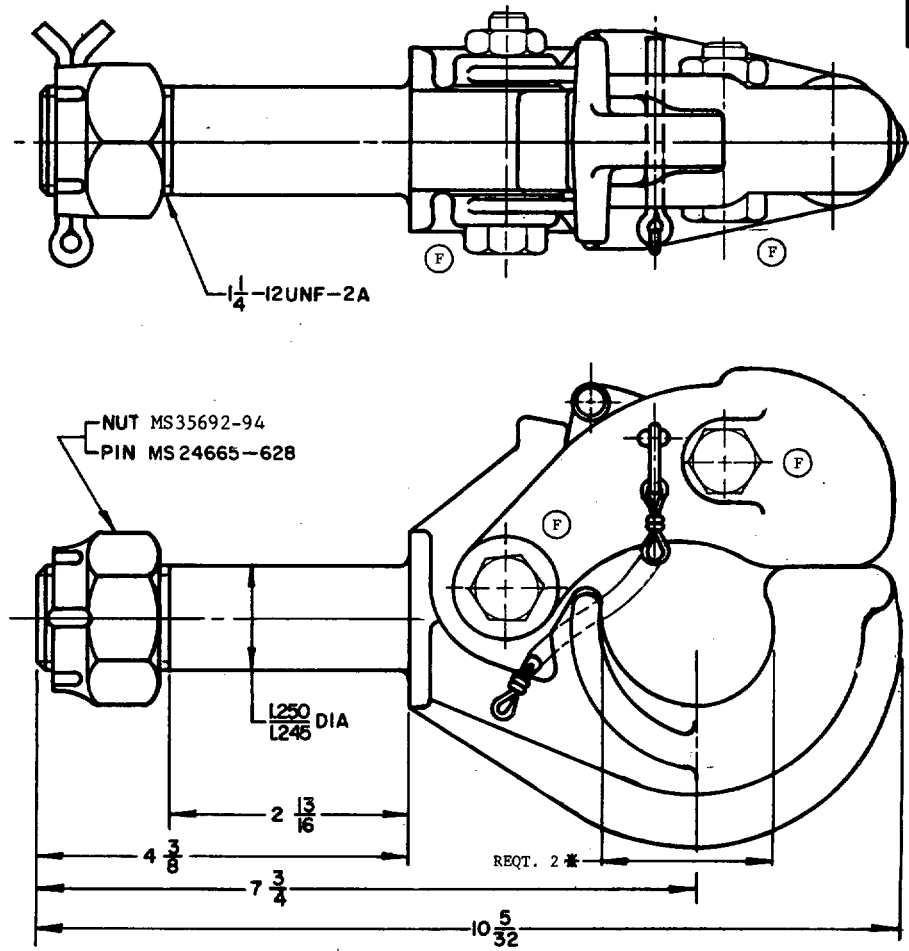


FED. SUP CLASS  
2540

REVIEW ACTIVITY: DLA-CS  
USER ACTIVITY: ARMY-ME;NAVY-MC



(F) REQUIREMENTS:

1. THREADS SHALL BE IN ACCORDANCE WITH FED-STD-H28/2.
2. APPLICABLE PROVISIONS OF ASCC AIR STD 11/8, QSTAG-264 AND STANAG 4101 ARE MARKED \*. THIS DIMENSION SHALL BE OF SUCH SIZE THAT IT WILL ACCEPT A 3" X 1.66" LUNETTE (SEE MS51336).
3. MARKING SHALL CONSIST OF THE MS PART NUMBER AND THE MANUFACTURER'S IDENTIFICATION IN ACCORDANCE WITH MIL-STD-130.

(F) NOTES:

1. DIMENSIONS ARE IN INCHES AND ARE SHOWN FOR ENGINEERING REFERENCE ONLY.
2. FOR DESIGN FEATURE PURPOSES, THIS STANDARD TAKES PRECEDENCE OVER PROCUREMENT DOCUMENTS REFERENCED HEREIN.
3. REFERENCED DOCUMENTS SHALL BE OF THE ISSUE IN EFFECT ON DATE OF INVITATION FOR BIDS OR REQUEST FOR PROPOSAL, EXCEPT THAT REFERENCED ADOPTED INDUSTRY DOCUMENTS SHALL GIVE THE DATE OF THE ISSUE ADOPTED.
4. THE USE OF RECYCLED MATERIALS WHICH MEET THE REQUIREMENTS OF THE APPLICABLE MATERIAL SPECIFICATION WITHOUT JEOPARDIZING THE INTENDED USE OF THE ITEM SHALL BE ENCOURAGED.

\* CERTAIN PROVISIONS OF THIS STANDARD ARE THE SUBJECT OF INTERNATIONAL STANDARDIZATION AGREEMENTS ASCC AIR STD 11/8, QSTAG-264 AND STANAG 4101. WHEN REVISION OR CANCELLATION OF THIS STANDARD IS PROPOSED WHICH WILL AFFECT OR VIOLATE THE INTERNATIONAL AGREEMENT CONCERNED, THE PREPARING ACTIVITY WILL TAKE APPROPRIATE RECONCILIATION ACTION THROUGH INTERNATIONAL STANDARDIZATION CHANNELS, INCLUDING DEPARTMENTAL STANDARDIZATION OFFICES, IF REQUIRED.

\* U.S. GOVERNMENT PRINTING OFFICE: 1981-505-022/8237

(F) DENOTES CHANGES

MS PART NO.	REFERENCE DRAWING
MS 51335-1	8380199

P.A. ARMY-AT Other Cust	INTERNATIONAL INTEREST	TITLE	MILITARY STANDARD
NAVY-YD	(SEE * )	PINTLE ASSEMBLY, TOWING, 18,000 LBS. CAPACITY, MANUAL RELEASE	MS 51335
AF-99		SUPERSEDES:	SHEET 1 OF 2
PROCUREMENT SPECIFICATION NONE		MS 51116 (ORD)	

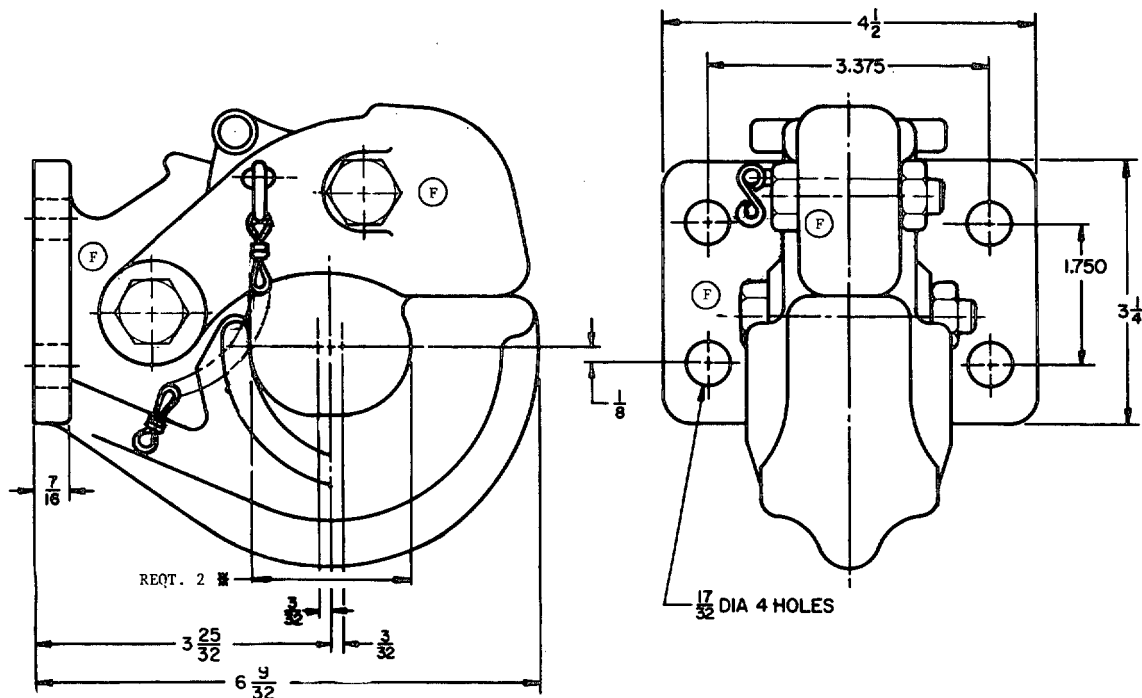
DD FORM 672-1 (Coordinated)

PREVIOUS EDITIONS OF THIS FORM ARE OBSOLETE.

2540-0306

APPROVED 10 NOVEMBER 1960 REVISED (A) 10 SEPTEMBER 1963 (B) 3 AUGUST 1965 (C) 24 JULY 1967 (D) 30 MAY 1972 (E) 9 MAR 79 (F) 29 SEP 81

This military standard is approved for use by all Departments and Agencies of the Department of Defense. Selection for all new engineering and design applications and for repetitive use shall be made from this document when applicable.

FED. SUP CLASS  
2540

(F) REQUIREMENTS:

1. THREADS SHALL BE IN ACCORDANCE WITH FED-STD-H28/2.
2. APPLICABLE PROVISIONS OF ASCC AIR STD 11/8, QSTAG-264 AND STANAG 4101 ARE MARKED \*. THIS DIMENSION SHALL BE OF SUCH SIZE THAT IT WILL ACCEPT A 3" X 1.66" LUNETTE (SEE MS51336).
3. MARKING SHALL CONSIST OF THE MS PART NUMBER AND THE MANUFACTURER'S IDENTIFICATION IN ACCORDANCE WITH MIL-STD-130.

(F) NOTES:

1. DIMENSIONS ARE IN INCHES AND ARE SHOWN FOR ENGINEERING REFERENCE ONLY.
2. FOR DESIGN FEATURE PURPOSES, THIS STANDARD TAKES PRECEDENCE OVER PROCUREMENT DOCUMENTS REFERENCED HEREIN.
3. REFERENCED DOCUMENTS SHALL BE OF THE ISSUE IN EFFECT ON DATE OF INVITATION FOR BIDS OR REQUEST FOR PROPOSAL, EXCEPT THAT REFERENCED ADOPTED INDUSTRY DOCUMENTS SHALL GIVE THE DATE OF THE ISSUE ADOPTED.
4. THE USE OF RECYCLED MATERIALS WHICH MEET THE REQUIREMENTS OF THE APPLICABLE MATERIAL SPECIFICATION WITHOUT JEOPARDIZING THE INTENDED USE OF THE ITEM SHALL BE ENCOURAGED.

\* CERTAIN PROVISIONS OF THIS STANDARD ARE THE SUBJECT OF INTERNATIONAL STANDARDIZATION AGREEMENTS ASCC AIR STD 11/8, QSTAG-264 AND STANAG 4101. WHEN REVISION OR CANCELLATION OF THIS STANDARD IS PROPOSED WHICH WILL AFFECT OR VIOLATE THE INTERNATIONAL AGREEMENT CONCERNED, THE PREPARING ACTIVITY WILL TAKE APPROPRIATE RECONCILIATION ACTION THROUGH INTERNATIONAL STANDARDIZATION CHANNELS, INCLUDING DEPARTMENTAL STANDARDIZATION OFFICES, IF REQUIRED.

MS PART NO.	REFERENCE DRAWING
MS 51335-2	8380195

P.A. Other Cust	INTERNATIONAL INTEREST (SEE * )	TITLE <b>PINTLE ASSEMBLY, TOWING, 18,000 LBS. CAPACITY, MANUAL RELEASE</b>	<b>MILITARY STANDARD</b>
PROCUREMENT SPECIFICATION			<b>MS 51335</b>
SUPERSEDES: MS 51116 (ORD)			SHEET 2 OF 2

APPROVED 10 NOVEMBER 1960 REVISED (F) FOR CHANGES SEE SHEETS 1 AND 2