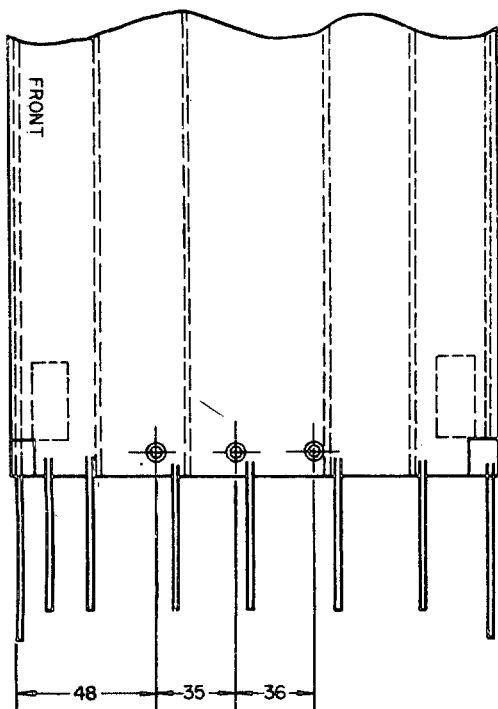


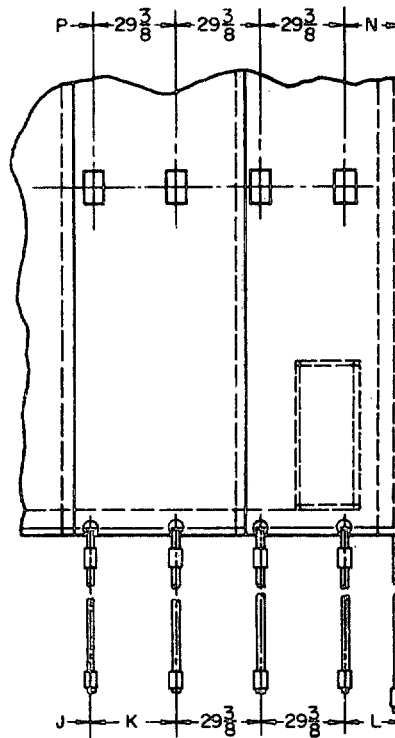
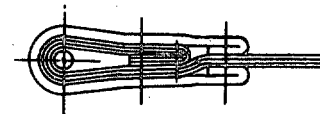
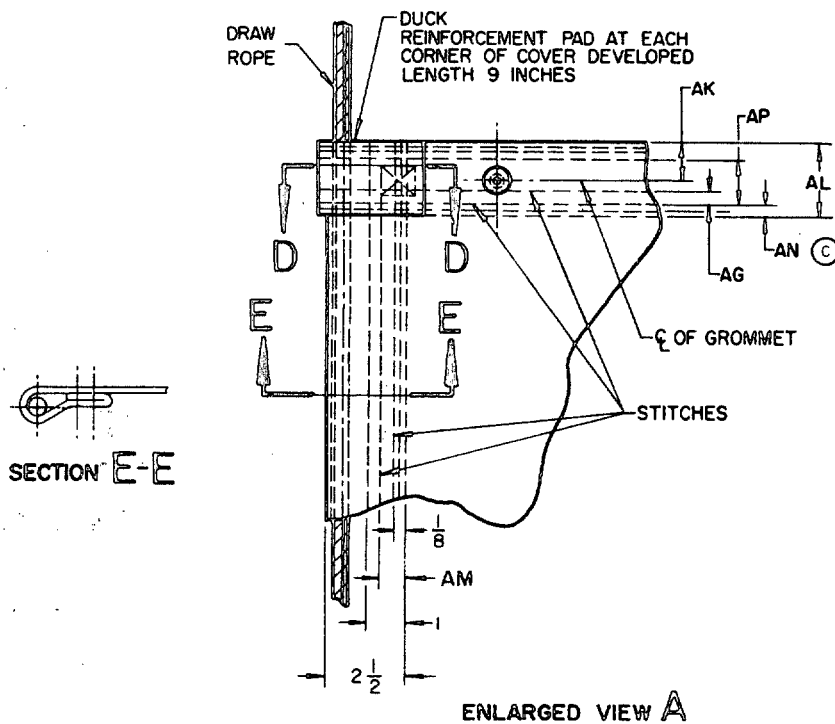
PROCUREMENT SPECIFICATION  
MIL-C-13489

MS 51323

SHEET 1 OF 6

FED. SUP CLASS  
2540

THESE ADDITIONAL GROMMETS FOR MS 51323-3 ONLY

THESE ADDITIONAL CHAFE ASSEMBLIES AND  
GROMMETS FOR MS 51323-26 ONLY

SECTION D-D

APPROVED 13 NOVEMBER 1959 REVISED (C) FOR CHANGES SEE SHEETS 2 AND 5

P.A.  
Other Cust

MILITARY STANDARD

COVER, FITTED, VEHICULAR BODY-TOP

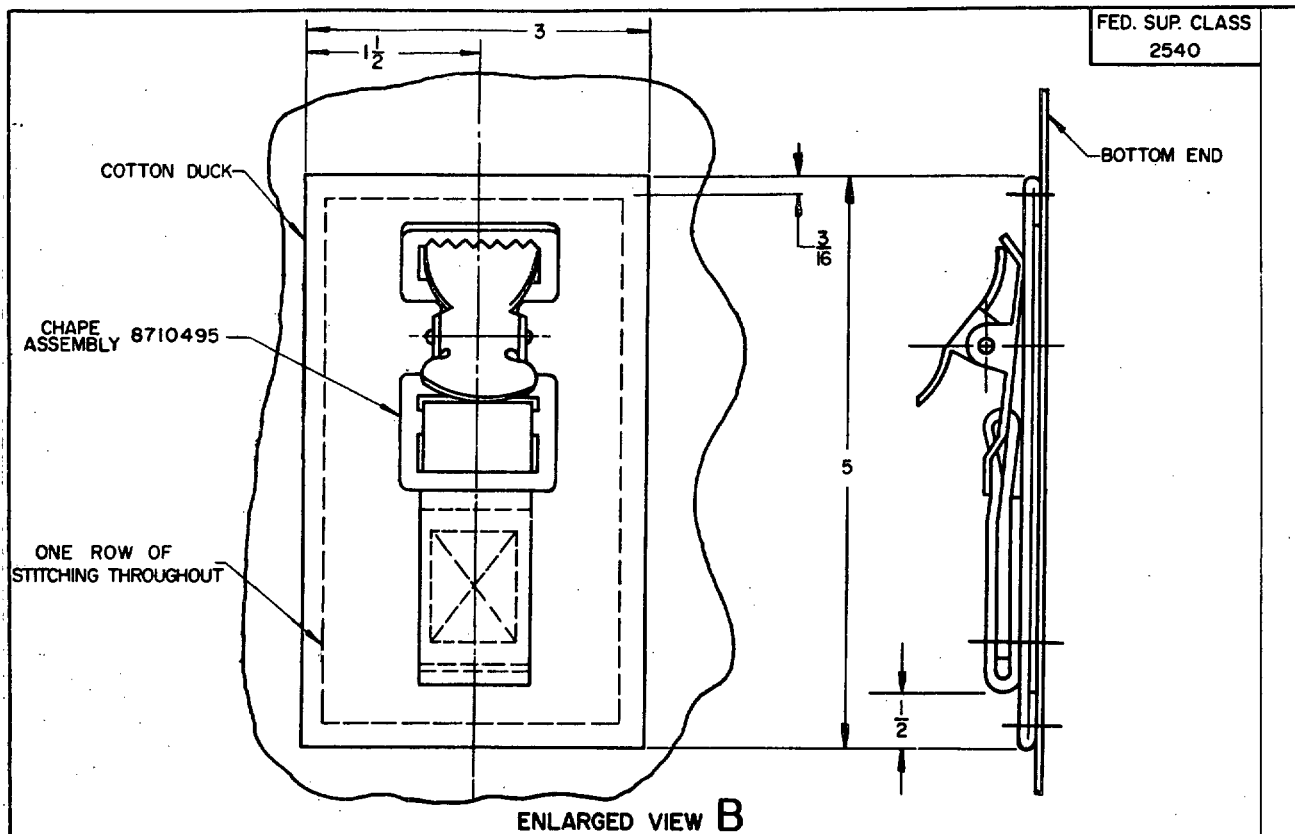
MS 51323

PROCUREMENT SPECIFICATION  
MIL-C-13489

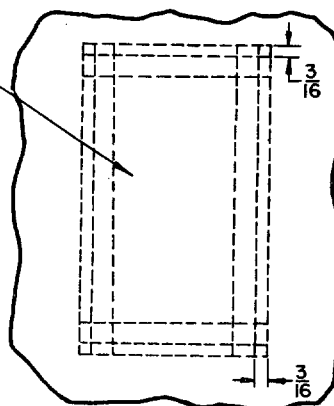
SUPERSEDES:

SHEET 2 OF 6

DD FORM 672-1  
1 OCT 52



DUCK REINFORCEMENT PAD AT EACH CORNER OF COVER. SEE COLUMN AJ FOR WIDTH. SUBTRACT COLUMN AL FROM COLUMN AF FOR LENGTH.



#### REQUIREMENTS:

1. THE MS PART NUMBER AND MANUFACTURER'S IDENTIFICATION SHALL BE CLEARLY AND PERMANENTLY MARKED ON THE INSIDE OF THE PART AND VISIBLE AT ASSEMBLY WITHOUT INTERFERING WITH ITS FUNCTIONS.
2. REFERENCED DOCUMENTS SHALL BE OF THE ISSUE IN EFFECT ON DATE OF INVITATION FOR BIDS.
3. THE COVER PART NUMBER CONSISTS OF THE MS NUMBER AND THE MS DASH NUMBER. EXAMPLE: MS51323-6.

#### NOTES:

1. FOR MATERIAL SEE PROCUREMENT SPECIFICATION.
2. UNLESS OTHERWISE SPECIFIED, DIMENSIONS ARE IN INCHES; TOLERANCES  $\pm 1/8$  ON FRACTIONS.
3. FOR DESIGN FEATURE PURPOSES, THIS STANDARD TAKES PRECEDENCE OVER DOCUMENTS REFERENCED HEREIN.
4. ON MS51323-26, DIMENSIONS K, L, P AND N DO NOT ABUT.
5. ALL DRAWINGS AND OTHER INFORMATION PERTAINING TO THIS ASSEMBLY CAN BE OBTAINED FROM: US ARMY TANK-AUTOMOTIVE COMMAND, ATTN: DRSTA-GSS, WARREN, MICHIGAN 48090.
6. THE USE OF RECYCLED MATERIALS WHICH MEET THE REQUIREMENTS OF THE APPLICABLE MATERIAL SPECIFICATIONS WITHOUT JEOPARDIZING THE INTENDED USE OF THE ITEM SHALL BE ENCOURAGED.

PA.  
Other Cust

## MILITARY STANDARD

### COVER, FITTED, VEHICULAR BODY-TOP

# MS51323

PROCUREMENT SPECIFICATION  
MIL-C-13489

SUPERSEDES:

SHEET 3 OF 6

FED. SUP CLASS  
2540

MS. DASH NO.	-1	-2	-3	-4	-5	-6	-7	-8	-9	-10	-11	-12	-13	-14	-15
BOX SIZE	80X108	80X120	80X144	80X180	80X147	80X147	64X78	70X108	84X86X98	84X86X120	84X86X128	84X86X150	84X168	84X114	88X90X120
A	136	152	176	212	176	176	94-1/2	136	136	152	166	188	200	146	152
B	176	176	176	176	176	176	144	165	174	174	174	174	174	172	181
NO. EYELET ROPES	12	12	12	14	12	12	4	10	8	10	10	10	12	12	12
C	5-1/2	5-1/2	5-1/2	5-1/2	5-1/2	5-1/2	22	17	28	22-3/4	24-3/4	25	27	8	4-1/2
D	14	14-7/8	15	16-1/4	15	13-1/2	50-1/2	26	29-1/2	17-1/4	35-3/4	40	28	11-5/8	16-1/2
E	26-1/4	29-1/8	35-1/4	35-3/8	35-1/4	29	—	26	29-3/4	23-1/2	31	37	31-1/2	26-3/4	29
F	26-1/4	23-1/2	35-1/4	35-3/8	35-1/4	36	—	26	26-1/4	32	30-1/2	37	32	27-1/2	29-1/2
G	26-1/4	35	35-1/4	35-3/8	35-1/4	36	—	23	—	34-1/2	21	25	31-1/2	22	29-1/2
H	19	23-1/2	28	35-3/8	28	36-1/2	—	—	—	—	—	—	25	25	21-1/2
J	—	—	—	28	—	—	—	—	—	—	—	—	—	—	—
K	—	—	—	—	—	—	—	—	—	—	—	—	—	—	—
L LAST TO END	18-3/4	20-1/2	21-3/4	20-3/4	21-3/4	19-1/2	22	18	22-1/2	22	23	24	25	25-1/8	21-1/2
M DRAW ROPE	60	60	60	60	60	60	43	60	60	60	60	60	60	60	60
MR DRAW ROPE	60	60	60	60	60	60	43	72	60	60	60	60	60	60	60
NO. BOW PADS	10	10	10	12	10	10	6	8	—	—	—	—	—	10	10
N LAST TO END	15-1/2	17-3/8	17-1/2	17-5/8	17-1/2	16	9-3/4	17-3/8	—	—	—	—	—	20-5/8	18-1/4
P	26-1/4	29-3/8	35-1/4	35-3/8	35-1/4	—	—	—	—	—	—	—	—	26-3/4	29-3/8
R	26-1/4	29-1/4	35-1/4	35-3/8	35-1/4	—	—	—	—	—	—	—	—	27-1/2	29-3/8
S	26-1/4	29-1/4	35-1/4	35-3/8	35-1/4	36	—	—	—	—	—	—	—	27-1/2	29-3/8
T	26-1/4	29-3/8	35-1/4	35-3/8	35-1/4	36	—	33-3/4	—	—	—	—	—	26-3/4	29-3/8
U	—	—	—	35-3/8	—	36	37-1/2	33-3/4	—	—	—	—	—	—	—
W	—	—	—	—	—	36	37-1/2	33-3/4	—	—	—	—	—	—	—
Y	15-1/2	17-3/8	17-1/2	17-1/2	17-1/2	16	9-3/4	17-3/8	—	—	—	—	—	—	—
Z	35-7/8	32	35-7/8	35-7/8	35-7/8	35-7/8	29-1/2	30-7/8	—	—	—	—	—	16-7/8	18-1/4
AE	8	8	8	8	8	8	2	8	8	8	8	8	8	8	8
AF	33	33	33	33	33	33	8	33	33	33	33	33	33	33	33
AG	5/8	5/8	5/8	5/8	5/8	5/8	5/8	1-3/4	3/4	3/4	3/4	3/4	3/4	3/4	3/4
AH	24	24	24	24	24	24	36	24	24	24	24	24	24	24	24
AJ	14	14	14	14	14	14	12	14	14	14	14	14	14	14	14
AK	1-1/4	1-1/4	1-1/4	1-1/4	1-1/4	2-1/2	1-1/4	2-1/4	1-1/4	1-1/4	1-1/4	1-1/4	1-1/4	1-1/4	1-1/4
AL	2-1/2	2-1/2	2-1/2	2-1/2	2-1/2	3-3/4	2-1/2	3-1/2	2-1/2	2-1/2	2-1/2	2-1/2	2-1/2	2-1/2	2-1/2
AM	5/8	5/8	5/8	5/8	5/8	5/8	5/8	5/8	3/4	3/4	3/4	3/4	3/4	3/4	3/4
AN	1/8	1/8	1/8	1/8	1/8	1/8	1/8	1/4	1/8	1/8	1/8	1/8	1/8	1/8	1/8
AP	1-7/8	1-7/8	1-7/8	1-7/8	1-7/8	3-1/8	1-7/8	3	1-7/8	1-7/8	1-7/8	1-7/8	1-7/8	1-7/8	1-7/8

FOR DEFINITIONS OF CODE SYMBOLS SEE SHEET 5.

FOR MATING END CURTAINS SEE MS 51324.

CONTINUATION OF MS DASH NUMBER TABULATION SEE SHEET 5.

APPROVED 13 NOVEMBER 1959 REVISED (C) FOR CHANGES SEE SHEETS 2 AND 5

PA.  
Other CustMILITARY STANDARD  
COVER, FITTED, VEHICULAR BODY-TOP

MS 51323

PROCUREMENT SPECIFICATION  
MIL-C-13489





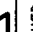
SUPERSEDES:

SHEET 4 OF 6

DD FORM 1 OCT 52 672-1

FED. SUP CLASS  
2540

MS DASH NO.	-16	-17	-18	-19	-20	-21	-22	-23	-24	-25	-26	-27	-28	-29	-30
BOX SIZE	88 X 132	88 X 147	88 X 168	90 X 168 (S-L)	88 X 132	94 X 140	88 X 180	90 X 180	89 X 204	88 X 147	88 X 244	88 X 168	88 X 147	96 X 180	88 X 210
A	166	182	202	202	166	174	214	214	238	170	272-3/4	197	176	209	238
B	181	181	181	244	181	187	195	197	185	159	176	176	176	188	200
NO. EYELET ROSES	12	12	14	14	14	14	14	14	16	10	20	14	12	14	16
C	5-1/2	5-1/2	5-1/2	5-1/2	5-1/2	5-1/2	5-1/2	5-1/2	5-1/2	26	5-1/2	5-1/2	5-1/2	5-1/2	5-1/2
D	17	17-3/4	17	22	16-3/4	17	17-1/2	17-1/2	13-3/8	30	12-1/2	14	13-1/2	19-1/2	16-1/4
E	23	26-3/4	33	33	24-1/4	28	35-1/2	35-1/2	32-5/8	27	23-7/8	25-1/2	27-5/8	25-1/2	25
F	41-3/4	45-1/2	33	33	24-1/4	19-1/4	35-1/2	35-1/2	32-5/8	34	29-3/8	33	35-1/4	35-1/2	34
G	32-1/4	36	24-5/8	33	17-1/2	27	35-1/2	35-1/2	34-7/8	26	29-3/8	33	36-1/4	36	33-3/4
H	22-3/4	26-1/2	32	33	27	27	35-1/2	35-1/2	34-7/8	—	29-3/8	33	37-7/8	36	37-3/4
J	—	—	32-7/8	26	26-3/4	27	25-7/8	25-7/8	32-5/8	—	35-1/2	33-1/2	—	—	34
K	—	—	—	—	—	—	—	—	32-5/8	—	29-3/8	—	—	37-1/2	32
L LAST TO END	23-3/4	24	24	16-1/2	24	23-1/4	23-1/8	23-1/8	18-7/8	27	19-1/8	19-1/2	20	14-1/2	20-3/4
M DRAW ROPE	60	60	60	60	60	60	60	60	60	60	60	60	72	60	60
MR DRAW ROPE	60	60	60	60	60	60	60	60	60	60	60	60	72	60	60
NO. BOW PADS	10	10	12	12	12	12	12	12	14	12	20	12	10	12	14
N LAST TO END	18-5/8	19	18-5/8	18-1/2	18-1/2	18-1/2	18-3/8	18-3/8	18-7/8	15-1/4	15-3/4	16	16	15-1/4	16
P	32-1/4	36-1/8	33	33	26-7/8	27	35-3/8	35-3/8	32-5/8	27-7/8	29-3/8	—	—	36-1/4	33-3/4
R	32-1/4	36	33	33	27	27	35-1/2	35-1/2	32-5/8	27-7/8	6	33	—	35-3/4	34
S	32-1/4	36	33	33	26-7/8	27	35-1/2	35-1/2	34-7/8	27-7/8	29-3/8	33	36	35-3/4	37-3/4
T	32-1/4	36-1/8	33	33	24-1/4	28	35-1/2	35-1/2	34-7/8	27-7/8	29-3/8	33	36	35	33-3/4
U	—	—	33	33	24-1/4	28	35-3/8	35-3/8	32-5/8	27-7/8	29-3/8	33	36	34-1/4	34
W	—	—	—	—	—	—	—	—	32-5/8	—	29-3/8	33	36	—	33-3/4
Y	18-3/8	18-3/4	18-3/8	18-1/2	18-1/4	18-1/2	18-3/8	18-3/8	18-7/8	15-1/4	16	16	16	16-3/4	16
Z	36	38	36	38	36	39	36	36	41	43-1/2	39-7/8	39-7/8	39-7/8	45-7/8	39-7/8
AE	8	8	8	8	8	8	8	8	8	5	8	8	8	8	8
AF	33	33	33	33	33	33	33	33	39	33	29	29	33	29	41
AG	3/4	3/4	3/4	3/4	3/4	3/4	3/4	3/4	3/4	5/8	1-3/4	1-3/4	5/8	1-1/4	5/8
AH	24	24	24	24	24	24	24	24	24	24	24	24	24	24	24
AJ	14	14	14	14	14	14	14	14	14	14	14	14	14	14	14
AK	1-1/4	1-1/4	1-1/4	1-1/4	1-1/4	1-1/4	1-1/4	1-1/4	1-1/4	1-1/4	2-1/4	2-1/4	2-1/4	2-1/4	2-1/4
AL	2-1/2	2-1/2	2-1/2	2-1/2	2-1/2	2-1/2	2-1/2	2-1/2	2-1/2	2-1/2	3-1/2	3-1/2	3-1/2	3-1/2	3-1/2
AM	3/4	3/4	3/4	3/4	3/4	3/4	3/4	3/4	3/4	3/4	5/8	5/8	5/8	5/8	5/8
AN	1/8	1/8	1/8	1/8	1/8	1/8	1/8	1/8	1/8	1/8	1/4	1/4	1/4	1/8	1/4
AP	1-7/8	1-7/8	1-7/8	1-7/8	1-7/8	1-7/8	1-7/8	1-7/8	1-7/8	1-7/8	3	3	3-1/8	3	3

 FOR VEHICLES WITH CAB OVER ENGINE.  
 FOR GALION ALL STEEL DUMP BODY LD #12. BODY 114 X 84 X 24 X 31 WITH 5 BOWS.  
 FOR BODIES WITH TIRES MOUNTED ON INSIDE FRONT BODY PANEL.  
 FOR BODIES WITH TIRES MOUNTED ON INSIDE BODY SIDE PANEL (PRIME MOVER).  
 FOR BODIES WITH 66 INCH BOW HEIGHT.

P.A.  
Other Cust

# MILITARY STANDARD COVER, FITTED, VEHICULAR BODY-TOP

MS 51323

PROCUREMENT SPECIFICATION  
MIL-C-13489

SUPERSEDES:

SHEET 5 OF 6

FED. SUP. CLASS  
2540

MS DASH NO. ⑤	FORMER ORD PART NO
1	501500
2	547804
3	547801
4	7971538
5	547801
6	7411556
7	7707288
8	8345248
9	547805
10	547802
11	547803
12	501499
13	501495
14	501477
15	7072142
16	7072143
17	7072144
18	7072145
19	7072146
20	7072147
21	7072148
22	7072149
23	7072150
24	7072151
25	7355428
26	7392938
27	7409679
28	7416338
29	7966197
30	7085460

APPROVED 13 NOVEMBER 1959 REVISED (C) FOR CHANGES SEE SHEETS 2 AND 5

PA. Other Cust	MILITARY STANDARD	MS51323
	COVER, FITTED, VEHICULAR BODY-TOP	
PROCUREMENT SPECIFICATION MIL-C-13489	SUPERSEDES:	SHEET 6 OF 6